

**RAPIDES AREA PLANNING COMMISSION**  
**Alexandria-Pineville Metropolitan Planning Organization**

---

**FY 2027 - 2030**  
**TRANSPORTATION IMPROVEMENT**  
**PROGRAM**

---

**DRAFT 2**

**FEBRUARY 2026**

The preparation of this document has been financed in part through grant(s) from the Federal Highway Administration and Federal Transit Administration, U.S. Department of Transportation, under the State Planning and Research Program, Section 505 [or Metropolitan Planning Program], Section 104(f) of Title 23, U.S. Code. The contents of this report do not necessarily reflect the official views or policy of the U.S. Department of Transportation.



## **Alexandria-Pineville Metropolitan Planning Organization**

# **TRANSPORTATION IMPROVEMENT PROGRAM FY 2027 - 2030**

*Prepared by:*



**Serving as the  
Alexandria/Pineville  
Metropolitan Planning Organization**

803 Johnston Street  
Alexandria, LA 71301  
Phone: (318) 487-5401  
Fax: (318) 487-5406  
[www.rapc.info](http://www.rapc.info)

***In cooperation with:***

Louisiana Department of Transportation and Development  
Federal Highway Administration  
Federal Transit Administration

***Funded by:***

Federal Highway Administration  
Federal Transit Administration  
Louisiana Department of Transportation and Development

The Rapides Area Planning Commission does not discriminate on the basis of race, color, national origin, income, gender, age, and disability in access to, or operation of its programs, services, activities, or in its hiring or employment practices. ADA and Title VI inquiries should be forwarded to 803 Johnston Street, Alexandria, Louisiana, 71301 (318) 487-5401.

# Table of Contents

## Section I

INTRODUCTION	2
GLOSSARY OF TERMS	4
FUNDING TYPES	5
RECORD OF ADOPTION	6
RESOLUTION	7

## Section II

PROJECTS LET TO CONSTRUCTION (2015-2025)	9
TIP FY 2023-2026 IMPLEMENTATION	11
TIP FY 2027-2030 HIGHWAY ELEMENT TABLES	13
TIP FY 2027-2030 FINANCIALLY CONSTRAINED PORTION (STP50-200K)	33
TIP FY 2027-2030 PROJECT LIST (OTHER FUNDING SOURCES)	34
ALEXANDRIA TRANSIT SYSTEM (ATRANS)	35
MPO CERTIFICATION OF PROJECT INCLUSION	36
TRANSIT ELEMENT	37
FTA 5310, 5311 PROJECT LISTINGS FOR FY23, FY24, FY25, FY26	38
COMPOSITE MAPS	40

## Section III

FINANCIAL PLAN	42
FTA FEDERAL FY 2018-2019 MPO APPORTIONMENT	45
TRANSPORTATION PERFORMANCE MEASURES	46
PERFORMANCE BASED PLANNING & TIP PROJECTS	51
TIP PROJECT SELECTION CRITERIA	52

## Section IV

TITLE VI NOTICE	55
COMMITTEE MEMBERS	56
COMMITTEE MEMBERS ADDRESS	57
PUBLIC NOTICE OF POLICY COMMITTEE MEETINGS	58
LADOTD PROJECT DEVELOPMENT PROCESS	59
What is an MPO and what is its role in the planning process?	60
What is transportation planning and why does it exist?	60
What is the importance of transportation planning in our metropolitan area?	60
PUBLIC REVIEW & ADOPTION	62
JOINT CERTIFICATION	63

<b>Appendix A   USDOT-FHWA Competitive Grant Projects Listing</b>	<b>64</b>
---	-----------

**SECTION I**

## **Introduction**

The Alexandria / Pineville Metropolitan Area is located within Central Louisiana. The majority is located within Rapides Parish and incorporates a small portion of southern Grant Parish adjacent to the northern portion of Rapides Parish after the 2010 census was released. The 2020 population for the metropolitan area is 107,278 with approximately 370 miles of streets, roads and highways that qualify for federal funding.

The Metropolitan Planning Organization (MPO) is responsible for fulfilling the federal and state transportation planning requirements specific to metropolitan and urbanized areas. These requirements have most recently been disseminated under the “Moving Ahead for Progress in the 21st Century Act” (MAP-21) and Fixing America's Surface Transportation Act (FAST Act).

The Rapides Area Planning Commission (RAPC) is the official designated MPO for Rapides Parish and is charged with all transportation planning activities (as mandated by MAP-21/FAST Act) along with developing a Financially Constrained Long Range Transportation Plan and the development of the Transportation Improvement Program (TIP), which is adopted and updated by official resolution no less than once every two years.

### **Transportation Improvement Program (TIP)**

The TIP is a financially constrained four-year program outlining the most immediate implementation priorities for area transportation projects, carrying out the goals and vision of AP-MPO's long range transportation plan, the Metropolitan Transportation Plan (MTP). It serves to allocate limited financial resources among the various transportation needs of the community and to program the expenditure of federal, state, and local transportation funds. To receive federal highway or transit funds, a project must be included in the TIP.

The TIP is developed through a collaborative process in which each jurisdiction or federal recipient of transportation funds is given the opportunity to submit projects to be considered for placement in the TIP. No project can receive federal funds unless it appears in the TIP.

The projects listed on the TIP were developed directly from the Financially Constrained Long Range Transportation Plan and the preparation of this document and the subsequent development of the projects contained herein, is an attempt, in part, to accommodate present and future transportation needs within the Alexandria/ Pineville Metropolitan Area based on realistic funding levels.

### **Public Involvement & Document Distribution**

The MPO aims to proactively engage the public in the transportation planning process and embraces federal requirements that MPOs provide the public with complete information, timely public notice, full public access to key decisions, and early and continuing involvement in developing the MTP, TIP, and other products. Public involvement strategies include presenting information and educating the public, continually soliciting public input, helping information flow between the public and decision makers, and considering and responding to public concerns. The TIP can be downloaded at [www.rapc.info/transportation](http://www.rapc.info/transportation).

**TIP distribution:**

- MPO distributes a Media Release to media partners throughout the region that addresses the comment period, where to find the Draft TIP, and identifies a point of contact to direct questions, special requests, or accommodations, and to submit their comments.
- MPO uploads the Draft TIP to the MPO website and notifies members of the MPO Transportation Policy Committee (TPC) and Technical Advisory Committee (TAC) for review.

**Availability of the Draft TIP for public review and comment and the MPO Transportation Policy Committee (TPC) meeting where the Draft TIP is scheduled on the agenda shall be publicly noticed as follows:**

- Posted on the Home page of the MPO website ([www.rapc.info/transportation](http://www.rapc.info/transportation)) in a prominent location for public review and comment.
- Written comments may be submitted by mail, email, or online public comment form.
- Verbal comments may be made during the public comment portion of the agenda during regularly scheduled MPO Transportation Policy meetings, and/or during a properly noticed MPO TPC meeting where adoption of a TIP is scheduled on the agenda.
- Public Review and Comment Period: 14 days

When significant public comments are received on a Draft TIP because of public involvement, a summary, analysis, and report on the disposition of comments shall be made part of the final TIP. If the final TIP differs significantly from the one made available for public comment or raises new material issues, an additional opportunity for public comment will be made available.

**Carbon Reduction Program (CRP) Integration**

In accordance with the Infrastructure Investment and Jobs Act (IIJA) and 23 U.S.C. §175, the Alexandria-Pineville MPO considers the Carbon Reduction Program (CRP) in the development of the Transportation Improvement Program (TIP). The TIP includes CRP-eligible planning and implementation activities that are consistent with the MPO's adopted Carbon Reduction Strategy, where applicable.

The inclusion of CRP-funded projects in the TIP reflects anticipated funding availability and strategic alignment; however, final project selection, funding amounts, and implementation timing remain subject to federal authorization, state coordination, and project readiness.

**System Resilience and Reliability**

Consistent with federal transportation policy emphasizing system resilience and reliability, the MPO considers the ability of proposed projects to reduce vulnerability to flooding, extreme weather, and other natural hazards. Projects that preserve, protect, or enhance critical transportation infrastructure may be prioritized where such investments align with regional needs and available funding.

The MPO's consideration of resilience does not constitute a guarantee of PROTECT Program funding and does not replace state or local hazard mitigation responsibilities.

## Glossary Of Terms

Abbreviation	Translation
ADA	Americans with Disabilities Act
ATRANS	Alexandria Transit System
BGRU	Bridge-rail and Guardrail
BRPT	Bridge Painting Program
CBD	Central Business District
DEMO	Federal Demonstration Projects
ENH	Enhancement Projects
FAST Act	Fixing America’s Surface Transportation Act
FBR	Federal Bridge Replacement
FCLRTP	Financially Constrained Long Range Transportation Plan
FHWA	Federal Highway Administration
FTA	Federal Transit Administration
HAZ	Hazard Elimination
I	Interstate
IPM	Interstate Preventive Maintenance
INSP	Federal Bridge Inspection Program
LADOTD	Louisiana Department of Transportation and Development
MAIN	Maintenance Projects
MAP-21	Moving Ahead for Progress in the 21st Century Act
MPO	Metropolitan Planning Organization
NHS	National Highway System
OFF	Off-system Bridge Replacement
OVER	Overlay Projects
RAPC	Rapides Area Planning Commission
RR	Railroad Crossing Improvements
STIP	State Transportation Improvement Program
STP	Surface Transportation Program
TAC	Technical Advisory Committee
SAFETEA-LU	Safe, Accountable, Flexible, Efficient Transportation Equity Act – A Legacy for Users
TIP	Transportation Improvement Program
TPC	Transportation Policy Committee

## Funding Types

		FEDERAL
<b>NHPP</b>	NATIONAL HIGHWAY PERFORMANCE PROGRAM	SEC. 1105
<b>NSFHP</b>	NATIONALLY SIGNIFICANT FREIGHT & HIGHWAY PROJECTS	SEC. 1106
<b>RHGC</b>	RAILWAY-HIGHWAY GRADE CROSSINGS	SEC. 1108
<b>STBG</b>	SURFACE TRANSPORTATION BLOCK GRANT PROGRAM <ul style="list-style-type: none"> <li>• STP&gt;200K (URBAN AREAS – NEW ORLEANS, BATON ROUGE, SHREVEPORT, LAYAFETTE)</li> <li>• STP50-200K (URBAN AREAS – ALEXANDRIA, HOUMA, LAKE CHARLES, MONROE, SLIDELL, MANDEVILLE-COVINGTON)</li> <li>• STPFLEX (FLEXIBLE)</li> <li>• STP&lt;5K (RURAL AREAS)</li> <li>• FBROFF (OFF SYSTEM BRIDGE MAP 21)</li> <li>• TAP (TRANSPORTATION ALTERNATIVES PROGRAM) TAP&gt;200K, TAP&lt;200K, TAPFLEX, TAP&lt;5K</li> </ul>	SEC. 1109
	BUNDLING OF BRIDGE PROJECTS	SEC. 1111
<b>CMAQ</b>	CONGESTION MITIGATION & AIR QUALITY	SEC. 1114
<b>NHFP</b>	NATIONAL HIGHWAY FREIGHT PROGRAM	SEC. 1116
<b>HSIP, SR2PS, HRRR, SATRANS</b>	HIGHWAY SAFETY IMPROVEMENT PROGRAM, SAFE ROUTES TO PUBLIC SPACES, HIGH RISK RURAL ROADS, SAFETY TRANSFER	
<b>RAIL HE. RAIL PD</b>	ELIMINATIONS OF HAZARDS AT RAILWAY-HIGHWAY CROSSINGS	
<b>DEMO</b>	FEDERAL DEMONSTRATION AND HIGH PRIORITY PROJECTS – DEFINED BY U.S.CONGRESS	
<b>ER</b>	FEDERAL EMERGENCY RELIEF PROGRAM FUNDING	
<b>FEMA</b>	FEDERAL EMERGENCY MANAGEMENT AGENCY FUNDS	
		STATE / LOCAL
<b>NFA</b>	STATE TRANSPORTATION FUNDS FOR NON-FEDERAL AID ROUTES	
<b>NFABOND</b>	STATE BONDS FOR NON-FEDERAL AID ROUTES	
<b>STCASH</b>	STATE TRANSPORTATION TRUST FUNDS FOR STATE FUNDED CONSTRUCTION	
<b>TIME</b>	TRANSPORTATION INFRASTRUCTURE MODEL FOR ECONOMIC DEVELOPMENT	
<b>STBONDS</b>	GENERAL OBLIGATION BONDS	
<b>STGEN</b>	STATE GENERAL FUNDS CASH	
<b>TOLLS</b>		
<b>LOCAL</b>	FUNDS PROVIDED BY LOCAL GOVERNMENT	
<b>OTHER</b>	OTHER SOURCE NOT LISTED	
<b>NFI</b>	NO FUNDING IDENTIFIED	

RECORD OF CHANGES PLACEHOLDER

MPO ADOPTING RESOLUTION PLACEHOLDER

**SECTION II**

# Highway Projects Let 2015-2025

PROJECT	DISTRICT	Parish Name	Delivery Date	Letting Date	Project Name	Letting Cost	Federal Cost	State Other Cost	FUND	ROUTE	Type Improvement	Category	LENGTH	UNIT COST	
H.010821	8	Rapides	9/1/15	12/16/16	US 71-WIDENING OF SERVICE RD CONNECTIONS	\$ 1,059,300	\$ 847,440	\$ 211,860	NHPP	US 71	ARTERIAL WIDENING	OPER Efficiency/Motorist Assistance Transportation Syst	3.34	\$ 317,155.81	
H.014311	8	Rapides	4/7/22	6/22/22	ALEX BIKE/PEP JAIL IMPLEMENTATION PHASE 1	\$ 546,951	\$ 437,561	\$ 109,390	STP&S	LA 28-X, LA 1208-X	BIKEWAYS	Urban Systems	4.64	\$ 117,877.39	
H.014324	8	Rapides	3/2/21	4/14/21	LA 3250-149 JUP RR OVERPASS REPAIR	\$ 1,067,091	\$ 170,733	\$ 896,358	REMB STPFLEX	LA 3250	BRIDGE REHAB/REPAIR	Preservation Bridge (On System)	0.02	\$ 1,067,091	
H.014673	8	Rapides	5/25/22	6/30/22	I-49 US 165 DEBONDED PPO CIRCUIT REHAB	\$ 330,696	\$ -	\$ 330,696	STGEN	I-49, US 165	BRIDGE REHAB/REPAIR	Preservation Bridge (On System)	2.5	\$ 330,696	
H.010014	8	Rapides	6/18/15	9/9/15	LA 1 OVER I-49 BRIDGE REHABILITATION	\$ 5,717,877	\$ 4,574,301	\$ 1,143,575	STPFLEX	LA 1	BRIDGE REHAB/REPAIR (I-LN)	Preservation Bridge (On System)	0.02	\$ 5,717,877	
H.012158	8	Rapides	6/9/16	6/22/16	LA 1207: CROSS DRAIN REPLACE (RAPIDES)	\$ 370,952	\$ -	\$ 370,952	STPFLEX	LA 1207	CULVERT REPLACEMENT	OPER Efficiency/Motorist Assistance Roadway Flooding	0.07	\$ 370,952	
H.012833	8	Rapides	4/6/17	4/27/17	US 165-X JACKSON AT THORN RD PIPE REP	\$ 146,183	\$ -	\$ 146,183	STCASH	US 165-X	CULVERT REPLACEMENT	Other/Miscellaneous	0.02	\$ 146,183	
H.014321	8	Rapides	5/14/20	5/14/20	LA 1208-2: INTERSECT AT US 71 SERVICE RD	\$ 65,065	\$ -	\$ 65,065	STCASH	LA 1208-2	CULVERT REPLACEMENT	Other/Miscellaneous	0	\$ 65,065	
H.013135	8	Grant	12/5/17	12/5/17	LA 1240: NANATACHE DAM EMBANKMENT REPAIR	\$ 222,790	\$ -	\$ 222,790	NFA	LA 1240	DAM EMBANKMENT REPAIR	Other/Miscellaneous	0.08	\$ 222,790	
H.012194	8	Rapides	8/30/16	10/12/16	US 167: CABLE BARRIERS RAPIDES PARISH	\$ 1,100,843	\$ 1,100,843	\$ -	HSIP	US 167	GUARD-RAIL, BRIDGE RAIL, BARRIER-RAIL, CABLE BARRIER	Safety	9.66	\$ 113,958.88	
H.012195	08, 03	Avoyelles, Evangeline, Rapides	6/27/18	6/27/18	I-49: CABLE BARRIERS AVOYELLES & RAPIDES	\$ 6,928,533	\$ -	\$ 6,928,533	STRANS	I-49	GUARD-RAIL, BRIDGE RAIL, BARRIER-RAIL, CABLE BARRIER	Safety	63.27	\$ 109,507.40	
H.010777	8	Rapides	5/18/15	8/21/15	US 71: TURN LINES FOR LEE ST & RANDOM DR	\$ 951,575	\$ 856,417	\$ 95,157	HSIP	US 71	INTERSECTION IMPROVEMENT	Safety	0.26	\$ 951,575	
H.010894	8	Rapides	6/25/15	8/21/15	US 165: RIGHT TURN LANE AT LA 112	\$ 387,242	\$ 339,681	\$ 47,561	HSIP NHPP	US 165	INTERSECTION IMPROVEMENT	OPER Efficiency/Motorist Assistance Transportation Syst	0.11	\$ 387,242	
H.011354	8	Rapides	9/4/15	11/18/15	LA 107: STILEY RD & PINEGROVE INT IMP	\$ 471,284	\$ 377,027	\$ 94,257	STPFLEX	LA 107	INTERSECTION IMPROVEMENT	OPER Efficiency/Motorist Assistance Transportation Syst	0.47	\$ 471,284	
H.011302	8	Rapides	3/31/16	6/22/16	LA 28: LEFT TURN LANE AT LA 316	\$ 1,139,343	\$ 1,025,409	\$ 113,934	HSIP	LA 28	INTERSECTION IMPROVEMENT	Safety	0.34	\$ 1,139,343	
H.011659	8	Rapides	3/17/16	6/8/16	LA 28: TURN LANE IMPROVEMENTS	\$ 501,720	\$ 451,548	\$ 50,172	HSIP	LA 28	INTERSECTION IMPROVEMENT	Safety	0.37	\$ 501,720	
H.012524	8	Rapides	9/18/17	11/8/17	LA 28W @ JOHN ALLISON DR RIGHT TURN LANE	\$ 192,914	\$ 154,331	\$ 38,583	STP&S/200K	LA 28	INTERSECTION IMPROVEMENT	Urban Systems	0.11	\$ 192,914	
H.011660	8	Rapides	5/21/18	7/11/18	LA 3225: TURN LANES AT LA 623	\$ 1,256,485	\$ 1,256,485	\$ -	HSIP/EN	LA 3225	INTERSECTION IMPROVEMENT	Safety	0.27	\$ 1,256,485	
H.011361	8	Rapides	2/28/22	4/13/22	US 71: TURN LANES FOR EMERG STAGING AREA	\$ 866,189	\$ -	\$ 866,189	STBONDS	US 71	INTERSECTION IMPROVEMENT	OPER Efficiency/Motorist Assistance Transportation Syst	0.43	\$ 866,189	
H.015266	8	Rapides	12/5/23	2/14/24	LA 28: R-CUT AT ST CLAIR RD	\$ 1,338,097	\$ 1,070,477	\$ 267,619	NHPP	LA 28	INTERSECTION IMPROVEMENTS, ADA, LANDSCAPING,	OPER Efficiency/Motorist Assistance Transportation Syst	0.52	\$ 1,338,097	
H.004823	8	Rapides	5/15/15	4/13/16	3RD ST ENHANCEMENTS ST JAMES TO BROADWAY	\$ 2,788,530	\$ 2,230,824	\$ 557,706	DEMO	LA 1	LIGHTING, IRRIGATION	DEMO/High Priority	0.67	\$ 4,161,984.46	
H.011505	8	Rapides	3/1/19	5/8/19	ALEXANDRIA ITS PHASE 3	\$ 1,901,943	\$ 1,521,555	\$ 380,389	NHPP	LA 28, US 71, US 1	ITS	OPER Efficiency/Motorist Assistance ITS	9.54	\$ 199,365.13	
H.011504	8	Rapides	8/2/19	4/9/25	ALEXANDRIA ITS PHASE 2	\$ 2,195,806	\$ 1,756,644	\$ 439,161	STP&S/200K	US 167, US 71	ITS	OPER Efficiency/Motorist Assistance ITS	6.73	\$ 326,271.25	
H.009720	8	Rapides	6/14/17	8/9/17	LA 1250: PINEVILLE URBAN STREETSCAPING	\$ 357,472	\$ 216,000	\$ 141,472	TAP&L200K LOCAL	LA 1250	LANDSCAPING, LIGHTING, IRRIGATION	Enhancements	0.32	\$ 1,117,100	
H.014095	8	Rapides	9/9/22	10/26/22	US 167: DONAHUE FERRY RD TO US 165	\$ 10,494,250	\$ 8,395,400	\$ 2,098,850	NHPP DEMO	US 167	MAJOR REHAB	Preservation Non-Interst NHS, DEMO/High Priority	1.32	\$ 7,950,189.26	
H.015150	8	Grant	3/28/23	8/22/23	R22 MULTI-USE TRAIL	\$ 536,790	\$ 419,990	\$ 116,800	LOCAL RTP			Recreational Trails Program	1	\$ 536,790	
H.009498	8	Rapides	8/8/22	9/14/22	LA 121: CALCASIEU RIVER BRIDGE (2x-LN spans at one crossing)	\$ 28,552,881	\$ 22,842,305	\$ 5,710,576	TIF&S/STP&S/200K	LA 121	NEW /REPLACE BRIDGE (RIVER)	Preservation Bridge (On System)	1.26	\$ 14,276,441	
H.010592	8	Grant	11/19/15	3/9/16	WILL LOOP RD & ROCK HILL RD BRIDGES	\$ 711,278	\$ 569,023	\$ 142,256	FBROFF			Preservation Bridge (Off System)	0	\$ 711,278	
H.001893	8	Rapides	6/5/17	7/18/17	LACONNAN BRIDGE	\$ 1,954,143	\$ 1,954,143	\$ -	FBROFF	LA 623	NEW /REPLACE BRIDGE (SMALL CREEKS)	Preservation Bridge (On System)	2.24	\$ 1,954,143	
H.001842	8	Grant	6/21/19	7/24/19	LA 471: DARTIGO CREEK & CREEK BRIDGES	\$ 3,669,053	\$ 2,935,243	\$ 733,811	FBROFF	LA 471	NEW /REPLACE BRIDGE (SMALL CREEKS)	Preservation Bridge (On System)	0.66	\$ 1,834,527	
H.011526	8	Rapides	7/9/20	8/12/20	CASTOR PLENGEAH STRANGE/PALMER CHPL BRDGS	\$ 1,819,991	\$ 1,455,993	\$ 363,998	FBROFF			Preservation Bridge (Off System)	0	\$ 606,664	
H.011531	8	Rapides	10/19/20	12/9/20	DIXIE CHURCH & SETJUR ROAD BRIDGES	\$ 1,098,064	\$ 878,451	\$ 219,613	FBROFF			Preservation Bridge (Off System)	0	\$ 549,032	
H.014167	8	Rapides	8/9/21	9/22/21	NORTH 16TH STREET BRIDGE REPLACEMENT	\$ 2,022,204	\$ 1,617,763	\$ 404,441	STP&S/200K-E STP&L200K			Urban Systems	0.07	\$ 2,022,204	
H.013120	8	Rapides	7/29/22	9/14/22	BETHEL ROAD OVER SLASH BAYOU TRIBUTARY	\$ 1,189,285	\$ 951,428	\$ 237,857	FBROFF			Preservation Bridge (Off System)	0.02	\$ 1,189,285	
H.014261	8	Rapides	2/8/24	4/17/24	DOSHIE ROAD OVER CHERRY WINCHE CRK TRIB	\$ 790,317	\$ 632,254	\$ 158,063	FBROFF			Preservation Bridge (Off System)	0.03	\$ 790,317	
H.008259	8	Rapides	9/15/15	10/14/15	LA 1204: O 369 MI E SPRINGHILL RD-US 165	\$ 1,004,296	\$ 803,436	\$ 200,859	STP&L200K	LA 1204	OVERLAY	Urban Systems	0.92	\$ 1,091,625.65	
H.011580	8	Rapides	2/24/16	7/13/16	LA 181: EVANGELINE PARISH LINE TO US 71	\$ 1,715,363	\$ -	\$ 1,715,363	NFA	LA 181	OVERLAY	Preservation Non-Interstate NFA	3.65	\$ 469,962.48	
H.009707	8	Rapides	5/5/16	7/13/16	LA 112: LA 113 - EDWARDS RD	\$ 2,838,216	\$ 2,938,216	\$ -	STPFLEX	LA 112	OVERLAY	Preservation Non-Interstate on NHS Kamp, STP System	7.19	\$ 408,653.15	
H.012137	8	Rapides	1/27/17	5/11/17	LA 121: LA 28 TO LA 496	\$ 2,083,756	\$ -	\$ 2,083,756	NFA	LA 121	OVERLAY	Preservation Non-Interstate NFA	4.07	\$ 511,979.40	
H.012142	8	Natchitoches, Rapides	5/8/17	7/12/17	LA 119: LA 8 TO CATHOLIC CHURCH RD	\$ 2,537,293	\$ 2,029,835	\$ 507,459	NFA	LA 119	OVERLAY	Preservation Non-Interstate NFA	5.77	\$ 439,738.89	
H.009556	8	Rapides	8/25/16	1/11/17	LA 107: LA 454 - 320' S OF ESTATE DRIVE	\$ 2,245,348	\$ 1,796,279	\$ 449,070	STPFLEX	LA 107	OVERLAY	Preservation Non-Interstate on NHS Kamp, STP System	5.23	\$ 429,320.91	
H.012547	8	Rapides	7/24/18	9/12/18	US 71: 230' N OF ANDREWS ST TO LA 498	\$ 3,419,432	\$ 2,735,546	\$ 683,886	NHPP	US 71	OVERLAY	Preservation Non-Interst NHS	2.32	\$ 1,473,893.22	
H.010355	8	Rapides	9/17/18	11/14/18	LA 113: LA 112 - CALCASIEU RIVER	\$ 1,578,032	\$ 1,262,426	\$ 315,606	STP&L5K	LA 113	OVERLAY	Preservation Non-Interstate on STP System	3.4	\$ 464,127.18	
H.012916	8	Grant	3/22/19	5/8/19	LA 158: US 71 TO VINEY RIDGE RD	\$ 2,164,896	\$ -	\$ 2,164,896	NFA	LA 158	OVERLAY	Preservation Non-Interstate NFA	3.81	\$ 568,214.15	
H.013452	8	Rapides	6/20/19	9/1/19	HORSESHOE DRIVE ROADWAY IMPROVEMENTS	\$ 1,348,755	\$ 1,079,004	\$ 269,751	STP&L200K			Urban Systems	2.7	\$ 499,538.82	
H.013901	8	Rapides	4/6/20	5/13/20	LA 28: WB FROM WHITE OAK TO BAYOU BOEUF	\$ 195,786	\$ 176,208	\$ 19,579	HSIP	LA 28	OVERLAY	Safety	0.17	\$ 1,151,684.41	
H.012559	8	Rapides	3/19/20	5/13/20	INDUSTRIAL PARK SITE ROAD REHAB	\$ 844,345	\$ 675,476	\$ 168,869	STP&L200K			Urban Systems	1.51	\$ 559,169.06	
H.013887	8	Rapides	7/9/21	10/13/21	RAPIDES AVE AND 3RD ST ROAD IMPROVEMENTS	\$ 3,015,047	\$ 2,412,038	\$ 603,009	STP&L200K-E STP&L200K			Urban Systems	2.66	\$ 1,133,476.38	
H.014099	8	Rapides	9/20/21	11/12/23	US 71: LA 1208-S LEE ST - ANDREWS ST	\$ 5,598,763	\$ 4,479,010	\$ 1,119,753	NHPP	LA 1208-S, US 71	OVERLAY	Preservation Non-Interstate NHS	2.09	\$ 2,678,833.73	
H.011598	8	Rapides	1/5/22	2/9/22	LA 8: LA 119 TO LA 1	\$ 6,321,487	\$ 5,057,190	\$ 1,264,297	STP&L5K	LA 8, LA 8-S	OVERLAY	Preservation Non-Interstate on STP System	9.8	\$ 645,049.71	
H.015314	8	Rapides	11/23/23	12/13/23	LA 1: RAPIDES STATION - CSLM LO 464	\$ 3,439,931	\$ -	\$ 3,439,931	STGEN	LA 1, I-49	OVERLAY	Preservation Non-Interstate on STP System	1.12	\$ 3,071,366.73	
H.013206	8	Grant	9/7/23	11/8/23	US 165: SB LANE - LA 524 TO LA 123	\$ 5,739,629	\$ 4,591,703	\$ 1,147,926	NHPP	US 165	OVERLAY	Preservation Non-Interst NHS	7.75	\$ 740,597.23	
H.014840	8	Grant	2/26/24	4/17/24	LA 1239: CREOLA ST - US 71	\$ 1,202,002	\$ -	\$ 1,202,002	NFA	LA 1239-1, LA 123	OVERLAY	Other/Miscellaneous Preservation Non-Interstate NFA	1.34	\$ 897,016.65	
H.015330	8	Grant	1/24/24	3/13/24	LA 472: LINCUM VILLAGE RD - LA 500	\$ 1,476,617	\$ -	\$ 1,476,617	NFA	LA 472	OVERLAY	Preservation Non-Interstate NFA	2.37	\$ 623,045.31	
H.015292	8	Rapides	4/21/25	6/11/25	LA 1200: LA 121 - LA 1	\$ 4,867,435	\$ 538,368	\$ 4,329,068	NFA STP&L5K	LA 1200	OVERLAY	Preservation Non-Interstate on STP System, Preservation	4.2	\$ 1,158,913.31	
H.015763	8	Rapides	12/28/24	5/14/25	US 165: 280' N OF LOWES DR - FRONTAGE RD	\$ 6,210,877	\$ 4,168,701	\$ 2,042,175	NHPP STGEN	US 165	OVERLAY	Preservation Non-Interst NHS	0.28	\$ 22,181,702.79	
H.012651	8	Rapides	12/21/16	2/8/17	I-49: PAVEMENT MARKING REPLACEMENT II	\$ 944,080	\$ 944,080	\$ -	NHPP	I-49	PAVEMENT MARKING REPLACEMENT	OPER Efficiency/Motorist Assistance Traffic Control Dev	15.07	\$ 62,646.32	
H.013568	8	Rapides	2/15/19	4/10/19	I-49: PAVEMENT MARKING REPLACEMENT VII	\$ 386,551	\$ 386,551	\$ -	NHPP	I-49	PAVEMENT MARKING REPLACEMENT	OPER Efficiency/Motorist Assistance Traffic Control Dev	25.08	\$ 15,412.70	
H.013153	8	Rapides	9/20/21	11/12/23	I-49: PAVEMENT MARKING REPLACEMENT V	\$ 470,432	\$ 470,432	\$ -	NHPP	I-49	PAVEMENT MARKING REPLACEMENT	OPER Efficiency/Motorist Assistance Traffic Control Dev	13.89	\$ 33,883.33	
H.013905	8	Rapides	1/5/22	5/13/20	US 167: PINEVILLE EXPY PAVEMENT MARKING	\$ 515,711	\$ 515,711	\$ -	NHPP	US 167	PAVEMENT MARKING REPLACEMENT	OPER Efficiency/Motorist Assistance Traffic Control Dev	9.66	\$ 53,388.23	
H.013224	8	Avoyelles, Natchitoches, Rapides	8/22/23	11/8/23	DISTOR: RUMBLE STRIPS/SIGNS/PPVT MKGS	\$ 2,043,521	\$ -	\$ 2,043,521	-	HSIP	LA 107, LA 496, LA 1	PAVEMENT MARKING REPLACEMENT	Safety	57.54	\$ 35,114.79
H.008265	8	Rapides	9/7/16	11/16/16	SUGARHOUSE RD. RECONSTRUCTION	\$ 3,767,866	\$ 3,014,292	\$ 753,573	STPFLEX	LA 107	RECONSTRUCTION	Urban Systems	2.03	\$ 1,856,091.42	
H.014536	8	Rapides	8/11/22	10/12/22	COLLEGE DRIVE PAVEMENT REHAB	\$ 1,874,827	\$ 1,499,701	\$ 375,126							

H.001581	8	Rapides	9/2/20	11/18/20	LA 28: US 167 - LA 3144	\$ 1,217,598	\$ 974,078	\$ 243,520	STP&L200K	LA 28	REHAB, CHIPSEAL, MICROSURFACING, CONCRETE PAVEMENT REPAIR	Preservation Preventive Maintenance	1.13	\$ 1,077,520.31	MILE	
H.014127	8	Rapides	2/28/21	4/14/21	LA 3128: J A WHELAN RD TO LA 107	\$ 199,925	\$ -	\$ 199,925	NFA	LA 3128	REHAB, CHIPSEAL, MICROSURFACING, CONCRETE PAVEMENT REPAIR	Preservation Non-Interstate NFA	0.66	\$ 302,917.12	MILE	
H.012931	8	Rapides	4/20/21	6/9/21	LA 3128: LA 107 TO LA 28	\$ 617,876	\$ 494,301	\$ 123,575	STPFLEX	LA 3128	REHAB, CHIPSEAL, MICROSURFACING, CONCRETE PAVEMENT REPAIR	Preservation Preventive Maintenance	3.49	\$ 177,041.94	MILE	
H.014096	8	Avoyelles, Grant, Natchitoches	7/16/21	9/22/21	LA 8, LA 115 & LA 126: AST	\$ 1,861,453	\$ 1,489,163	\$ 372,291	STPFLEX	LA 126, LA 115, LA 8	REHAB, CHIPSEAL, MICROSURFACING, CONCRETE PAVEMENT REPAIR	Preservation Preventive Maintenance	17.22	\$ 108,098.34	MILE	
H.015073	8	Grant	5/15/23	7/12/23	LA 8: RED RIVER BR DECK WATERPROOFING	\$ 321,580	\$ 257,264	\$ 64,316	STP&L5K FBFRONOFF	LA 8	REHAB, CHIPSEAL, MICROSURFACING, CONCRETE PAVEMENT REPAIR	Preservation Bridge (On System)	0.58	\$ 554,448.28	MILE	
H.014788	8	Rapides	6/12/23	8/9/23	LA 623: US 165 TO CAMP LIVINGSTON RD	\$ 475,808	\$ 380,646	\$ 95,162	STPFLEX	LA 623	REHAB, CHIPSEAL, MICROSURFACING, CONCRETE PAVEMENT REPAIR	Preservation Preventive Maintenance	2.31	\$ 205,977.46	MILE	
H.015063	8	Grant	8/10/23	2/14/24	LA 3169, LA 524, LA 502: OVERLAYS	\$ 3,705,301	\$ -	\$ 3,705,301	STGEN	LA 524, LA 502, LA 3169	REHAB, CHIPSEAL, MICROSURFACING, CONCRETE PAVEMENT REPAIR	Road Transfer	7.06	\$ 524,830.22	MILE	
H.002672	8	Rapides	8/30/18	10/10/18	JACKSON(LA 1208-3)@HORSESHOE ROUNDABOUT	\$ 1,836,940	\$ 1,836,940	\$ -	STPFLEX	LA 488	ROUNDABOUT	OPER Efficiency/Motorist Assistance Transportation Syst	0.41	\$ 1,836,940	EACH	
H.008263	8	Rapides	2/26/20	3/11/20	LA 3144/SUSEK DRIVE ROUNDABOUT	\$ 1,067,676	\$ 1,067,676	\$ -	NHPP	LA 3144	ROUNDABOUT	Safety	0.11	\$ 1,067,676	EACH	
H.008278	8	Rapides	7/11/17	8/16/17	US 71-UP RR OVERPASS NEAR TOGA	\$ 11,067,709	\$ 11,067,709	\$ -	NHPP	US 71	RR OVERPASS	Preservation Bridge (On System)	0.4	\$ 11,067,709	EACH	
H.000577	8	Rapides	12/30/19	2/12/20	US 165-X: KCS RAILWAY OVERPASS	\$ 1,919,787	\$ 1,535,830	\$ 383,957	STPFLEX	US 165-X	RR OVERPASS REMOVAL & REPLACE W/CROSSING	Preservation Bridge (On System)	0.38	\$ 1,919,787	EACH	
H.012719	8	Rapides		12/14/16	LA 3170: KCS RR XING (RAPIDES)	\$ 137,737	\$ 68,869	\$ 68,869	STPFLEX LOCAL	LA 3170	RR XING IMPROVEMENTS	Railroads	0.03	\$ 137,737	EACH	
H.011306	8	Rapides		2/1/17	ROBBINS RD: UP RR XING (FOREST HILL)	\$ 307,047	\$ 307,047	\$ -	RAIL PD		RR XING IMPROVEMENTS	Railroads	0	\$ 307,047	EACH	
H.012829	8	Rapides		7/12/17	LA 3170:KCS RR XING PREEMPTION (RAPIDES)	\$ 25,000	\$ 25,000	\$ -	STPFLEX	LA 3170	RR XING IMPROVEMENTS	Railroads	0.03	\$ 25,000	EACH	
H.013399	8	Rapides		5/2/18	LA 1203: UP RR CROSSING (RAPIDES)	\$ 244,000	\$ 244,000	\$ -	STPFLEX	LA 1203	RR XING IMPROVEMENTS	Railroads	0.01	\$ 244,000	EACH	
H.013440	8	Rapides		9/20/19	POWELL & KARLA: UP RR XINGS (RAPIDES)	\$ 355,745	\$ 320,171	\$ 35,575	RAIL PD		RR XING IMPROVEMENTS	Railroads	0.02	\$ 355,745	EACH	
H.013288	8	Rapides		5/26/20	LA 107: KCS RR XING (PINEVILLE)	\$ 300,490	\$ 150,245	\$ 150,245	LOCAL STPFLEX	LA 107	RR XING IMPROVEMENTS	Railroads	0.05	\$ 300,490	EACH	
H.009723	8	Rapides		4/2/18	5/30/18	WOODWORTH SIDEWALK IMPROVEMENTS PH 3	\$ 385,501	\$ 238,100	\$ 147,401	LOCAL TAP&L5K		SIDEWALKS	Enhancements	0	\$ -	MILE
H.009299	8	Rapides		7/6/18	8/8/18	CITY OF ALEXANDRIA SIDEWALKS	\$ 633,235	\$ 633,235	\$ -	SR2S		SIDEWALKS	Safety Safety Routes To School	0	\$ -	MILE
H.011194	8	Rapides		5/30/23	6/28/23	PINEVILLE ELEMENTARY SIDEWALKS	\$ 1,611,285	\$ 1,538,546	\$ 72,739	HSIP-VRU HSIPPEN	US 165-X	SIDEWALKS	Safety Safety Routes To School	1.55	\$ 1,039,539	MILE
H.009852	8	Rapides		4/13/18	7/1/18	MASONIC DRIVE CORRIDOR ENHANCEMENT, PH 3	\$ 597,247	\$ 546,600	\$ 50,647	LOCAL TAP&L200K		SIDEWALKS W/LIGHTING	Enhancements	0	\$ -	MILE
H.000574	8	Rapides		2/15/22	4/13/22	MASONIC DRIVE STREETScape, PHASE II	\$ 1,074,874	\$ 1,021,130	\$ 53,744	TAP&L200K TAP50-2	LA 1208-5	SIDEWALKS W/LIGHTING	Enhancements	0.73	\$ 1,472,430	MILE
H.011938	8	Rapides		4/17/20	6/10/20	I-49: 2 MILES N LA 3285 - 4 MILES N LA 1	\$ 1,988,131	\$ 1,988,131	\$ -	NHPP	I-49	SIGNAGE	OPER Efficiency/Motorist Assistance Traffic Control Dev	23.91	\$ 83,151	MILE
H.012465	03.08	Avoyelles, Evangeline, Rapides		4/26/23	6/14/23	I-49 (ST LANDRY PLE - 2 MI. N. LA 3265)	\$ 2,109,152	\$ 2,109,152	\$ -	NHPP	I-49	SIGNAGE	OPER Efficiency/Motorist Assistance Traffic Control Dev	29.75	\$ 70,896	MILE
H.012015	8	Grant, Natchitoches, Rapides		5/24/18	6/27/18	LA1, LA158 & US71 SIGN TRUSS & CANTILEVER	\$ 535,367	\$ 535,367	\$ -	STPFLEX NHPP	LA 1, US 71, LA 158	SIGNAGE (TRUSS/CANTILEVER)	OPER Efficiency/Motorist Assistance Traffic Control Dev	0.05	\$ 535,367	EACH
H.012015	8	Grant, Natchitoches, Rapides		5/24/18	6/27/18	LA1, LA158 & US71 SIGN TRUSS & CANTILEVER	\$ 535,367	\$ 535,367	\$ -	STPFLEX NHPP	LA 1, US 71, LA 158	SIGNAGE (TRUSS/CANTILEVER)	OPER Efficiency/Motorist Assistance Traffic Control Dev	0.05	\$ 535,367	EACH
H.013856	8	Rapides		4/2/20	5/13/20	I-49 @ US 165: RAMP TRUSS REPLACEMENT	\$ 430,050	\$ 430,050	\$ -	NHPP	I-49	SIGNAGE (TRUSS/CANTILEVER)	OPER Efficiency/Motorist Assistance Traffic Control Dev	0.38	\$ 430,050	EACH
H.013878	8	Rapides		5/8/19	LA 28 SIGNAL PERFORMANCE MEASURES	\$ 207,110	\$ 207,110	\$ -	NHPP	LA 28	TRAFFIC SIGNAL UPGRADES	OPER Efficiency/Motorist Assistance Traffic Control Dev	3.83	\$ 54,076	MILE	

**FFY2023–2026 TIP Implementation:**

The following major STP50-200K projects listed in the MPOs FFY2019-2022 Transportation Improvement Program were completed prior to the effective date of the FFY2027-2030 TIP:

- H.014647 | ELLIOTT ST. REHAB: MACARTHUR DR TO I-49
- H.011504 | ALEXANDRIA ITS PHASE 2
- H.014311 | ALEX BIKE/PED PLAN IMPLEMENTATIONPHASE 1
- L.000062 | MOTORIST ASSISTANCE PATROL (2023, 2024, 2025, 2026)

The following major STP50-200K projects listed in the MPOs FFY2023-2026 Transportation Improvement Program were delayed and/or still underway by the effective date of the FFY2027-2030 TIP:

- H.972574 | METROPOLITAN TRANSPORTATION PLAN UPDATE
- H.016252 | MASONIC DRIVE: TEXAS AVE - LEE ST
- H.016203 | ENGLAND AIRPARK ROADWAY IMPROVEMENTS
- H.016757 | RAPC AERIAL PHOTOGRAPHY 2026

The following major STP50-200K projects listed in the MPOs FFY2023-2026 Transportation Improvement Program were delayed and moved to FFY2027-2030 TIP:

- H.015633 | COA ASPHALTIC REHAB - PHASE III
- H.016197 | LA 1208-3: JACKSON STREET REHABILITATION
- H.015312 | JONES STREET PAVEMENT REHABILITATION
- H.015476 | FOISY STREET RECONSTRUCTION

The following major STP50-200K projects listed in the MPOs FFY2023-2026 Transportation Improvement Program removed:

Project	Reason
H.XXXXXX   BUHLOW-CENTRAL GREENWAY CONSTRUCTION	Implementation pursued under ATIIP competitive grant program.
H.XXXXXX   US 165-X AT LA 3144 ROUNDABOUT	Implementation pursued under DOTD District 08 Safety Improvement Program
H.XXXXXX   LA 28E SAFETY IMPROVEMENTS	Implementation pursued under HSIP competitive grant program
H.XXXXXX   ALEX BIKE/PED PLAN IMPLEMENTATIONPHASE 1	Program cancelled due to poor construction of Phase I, loss of local support, change in DOTD / DOT guidance regarding designated bicycle lanes and shared lanes along state roads.

## FFY2023-2026 TIP Implementation Challenges

Implementation of the FFY2023–2026 Transportation Improvement Program (TIP) occurred during a period of significant transition in federal transportation policy, funding availability, and project delivery conditions. While the MPO worked closely with project sponsors and the Louisiana Department of Transportation and Development (LADOTD) to advance programmed projects, several challenges affected project scheduling, phasing, and amendment frequency. A primary challenge was volatility in project costs and schedules, driven by inflationary pressures, supply chain disruptions, and contractor availability following the COVID-19 pandemic. Construction cost escalation and material procurement delays affected multiple projects, requiring scope refinements, budget adjustments, or deferral to later fiscal years to maintain fiscal constraint. Poor state of utility infrastructure at project locations adds additional project implementation cost and delay, forcing the MPO to decide whether to use additional STP50-200K funds to repair utilities as part of project scope or delay project straining available resources. Local matching funds are increasingly hard to secure due to significant project implementation cost.

Implementation of the FFY2023–2026 Transportation Improvement Program (TIP) provided important insight into factors affecting project delivery, fiscal stability, and program administration. The Alexandria–Pineville Metropolitan Planning Organization (AP-MPO) used these lessons to refine development of the FFY2027–2030 TIP to improve financial realism, deliverability, and compliance with 23 CFR 450.324.

### Key Lessons Learned & FFY2027-2030 TIP Enhancements:

- **Financial Volatility Requires Conservative Assumptions**

*Lesson:* Construction cost escalation, supply chain disruptions, and market conditions affected project budgets and schedules.

*Corrective Action:* The FFY2027–2030 TIP relies on historical recurring funding analysis, emphasizing median annual investment levels, and phases larger projects to reduce fiscal risk.

- **Project Readiness Must Drive Programming Decisions**

*Lesson:* Delays in environmental clearance, right-of-way acquisition, and utility coordination affected letting schedules.

*Corrective Action:* Programming decisions now place greater emphasis on project readiness, with clearer differentiation between planning activities and implementation projects.

- **Recurring and Non-Recurring Funds Must Be Clearly Distinguished**

*Lesson:* Use of one-time or discretionary funding as a baseline increased the risk of over-programming.

*Corrective Action:* The Financial Plan explicitly separates recurring, formula-based funding from non-recurring and discretionary sources, which are not assumed for ongoing capacity.

- **Balanced Scheduling Improves Fiscal Constraint**

*Lesson:* Concentration of projects in later TIP years increased amendment frequency.

*Corrective Action:* Projects are more evenly distributed across the FFY2027–2030 TIP, guided by annual funding benchmarks by MTP Category and funding program.

- **Clear Role of Planning Activities Strengthens Program Stability**

*Lesson:* Planning activities were sometimes viewed as competing with capital projects.

*Corrective Action:* The TIP clearly identifies planning and programmatic activities as supporting future project development and performance-based decision-making, without obligating capital implementation.

- **Improved Documentation Supports FHWA Review**

*Lesson:* Ambiguity in financial assumptions increased review time and amendments.

*Corrective Action:* The MPO enhanced documentation with historic funding tables, category- and fund-level benchmarks, and clear labeling of nominal versus constant dollars.



Remarks	Type Improvement	Work Type
CITY OF ALEXANDRIA TO PROVIDE LOCAL MATCH.	REMOVE BRICK AND RECONSTRUCT WITH PCC	URBAN SYSTEMS

Project Phase	Project Cost	Total Cost (w/CE&I+IDC)	Federal Share	Fund	Year	Sponsor
CONSTRUCTION	\$3,000,000.00	\$3,450,000.00	\$2,760,000.00	STP50-200K	2030	COA
<b>Total Cost</b>	<b>\$3,000,000.00</b>	<b>\$3,450,000.00</b>	<b>\$2,760,000.00</b>			

Project: L.000038 PLANNING, TRAINING AND RESEARCH

Remarks	Type Improvement	Work Type
IN STIP BY LINE ITEM, ONLY FOR REFERENCE	HANDLED THROUGH OPERATING BUDGET	OTHER / MISCELLANEOUS.

Project Phase	Project Cost	Total Cost (w/CE&I+IDC)	Federal Share	Fund	Year	Sponsor
FEASIBILITY	\$0.00	\$0.00	\$0.00	CM	2027	
	\$450.00	\$450.00	\$360.00	DEMO	2027	
	\$45,000.00	\$45,000.00	\$36,000.00	HSIPPEN	2027	
	\$1,125.00	\$1,125.00	\$900.00	LOCAL	2027	
	\$9,000.00	\$9,000.00	\$7,200.00	LTAP	2027	
	\$90,000.00	\$90,000.00	\$72,000.00	SPR MAND	2027	
	\$545,625.00	\$545,625.00	\$436,500.00	SPR OPT	2027	
	\$225,000.00	\$225,000.00	\$180,000.00	STCASH	2027	
	\$14,175.00	\$14,175.00	\$11,340.00	STP50-200K	2027	
	\$348,750.00	\$348,750.00	\$279,000.00	STP-5K	2027	
	\$1,125.00	\$1,125.00	\$900.00	CM	2028	
	\$33,750.00	\$33,750.00	\$27,000.00	HSIPPEN	2028	
	\$9,000.00	\$9,000.00	\$7,200.00	LTAP	2028	
	\$67,500.00	\$67,500.00	\$54,000.00	SPR MAND	2028	
	\$472,500.00	\$472,500.00	\$378,000.00	SPR OPT	2028	
	\$9,000.00	\$9,000.00	\$7,200.00	STCASH	2028	
	\$20,250.00	\$20,250.00	\$16,200.00	STP-200K	2028	
	\$337,500.00	\$337,500.00	\$270,000.00	STP-5K	2028	
	\$1,125.00	\$1,125.00	\$900.00	STPFLEX	2028	
	\$225.00	\$225.00	\$180.00	CM	2029	
	\$1,350.00	\$1,350.00	\$1,080.00	DEMO	2029	
	\$22,500.00	\$22,500.00	\$18,000.00	HSIPPEN	2029	
	\$9,000.00	\$9,000.00	\$7,200.00	LTAP	2029	
	\$90,000.00	\$90,000.00	\$72,000.00	SPR MAND	2029	
	\$427,500.00	\$427,500.00	\$342,000.00	SPR OPT	2029	
	\$56,250.00	\$56,250.00	\$45,000.00	STCASH	2029	
	\$368,550.00	\$368,550.00	\$294,840.00	STP-200K	2029	
	\$22,725.00	\$22,725.00	\$18,180.00	STP-5K	2029	
	\$10,125.00	\$10,125.00	\$8,100.00	STPFLEX E	2029	
	\$1,125.00	\$1,125.00	\$900.00	TCP	2029	
	\$146,250.00	\$146,250.00	\$117,000.00	HSIPPEN	2030	
	\$9,000.00	\$9,000.00	\$7,200.00	LTAP	2030	
	\$202,500.00	\$202,500.00	\$162,000.00	NHPP	2030	
	\$157,500.00	\$157,500.00	\$126,000.00	SPR MAND	2030	
	\$427,500.00	\$427,500.00	\$342,000.00	SPR OPT	2030	
	\$9,000.00	\$9,000.00	\$7,200.00	STCASH	2030	
	\$9,000.00	\$9,000.00	\$7,200.00	STP-200K	2030	
<b>Total Cost</b>	<b>\$4,200,975.00</b>	<b>4,200,975.00</b>	<b>3,360,780.00</b>			

Project: L.000039 ACCELERATED LOADING FACILITY

Remarks	Type Improvement	Work Type
IN STIP BY LINE ITEM, ONLY FOR REFERENCE	CONSTRUCT TEST SECTIONS	OTHER / MISCELLANEOUS

Project Phase	Project Cost	Total Cost (w/CE&I+IDC)	Federal Share	Fund	Year	Sponsor
CONSTRUCTION	\$1,125.00	\$2,475.00	\$1,980.00	STPFLEX	2027	
	\$1,125.00	\$2,475.00	\$1,980.00	STPFLEX	2028	
	\$1,125.00	\$2,475.00	\$1,980.00	STPFLEX	2029	
	\$1,125.00	\$2,475.00	\$1,980.00	STPFLEX	2030	
<b>Total Cost</b>	<b>\$4,500.00</b>	<b>\$9,900.00</b>	<b>\$7,920.00</b>			

Project: L.000040 FEDERAL BRIDGE INSPECTION PROGRAMS

Remarks	Type Improvement	Work Type
IN STIP BY LINE ITEM, ONLY FOR REFERENCE	INSPECTIONS, RATINGS, LOAD FACTORS	PRESERVATION, BRIDGE (ON SYSTEM)

Project Phase	Project Cost	Total Cost (w/CE&I+IDC)	Federal Share	Fund	Year	Sponsor
FEASIBILITY	\$135,000.00	\$135,000.00	\$108,000.00	STPFLEX	2027	
	\$4,500.00	\$4,500.00	\$3,600.00	DEMO	2028	
	\$6,750.00	\$6,750.00	\$5,400.00	NHPP	2028	
	\$101,250.00	\$101,250.00	\$81,000.00	STPFLEX	2028	
	\$22,500.00	\$22,500.00	\$18,000.00	FBROFF	2029	
	\$90,000.00	\$90,000.00	\$72,000.00	STPFLEX	2029	
	\$112,500.00	\$112,500.00	\$90,000.00	STPFLEX	2030	
DESIGN/ENGINEER	\$2,250.00	\$2,250.00	\$1,800.00	STPFLEX	2027	
	\$2,250.00	\$2,250.00	\$1,800.00	STPFLEX	2028	
	\$2,250.00	\$2,250.00	\$1,800.00	STPFLEX	2029	
CONSTRUCTION	\$11,250.00	\$12,375.00	\$9,900.00	STPFLEX	2027	
	\$2,250.00	\$2,475.00	\$1,980.00	STPFLEX	2028	
	\$2,250.00	\$2,475.00	\$1,980.00	STPFLEX	2029	
	\$2,250.00	\$2,475.00	\$1,980.00	STPFLEX	2030	
<b>Total Cost</b>	<b>\$497,250.00</b>	<b>\$499,050.00</b>	<b>\$399,240.00</b>			

Project: L.000046 MISC STP ENHANCEMENT PROJECTS

Remarks		Type Improvement			Work Type		
IN STIP BY LINE ITEM, ONLY FOR REFERENCE							
Project Phase	Project Cost	Total Cost (w/CE&I+IDC)	Federal Share	Fund	Year	Sponsor	
DESIGN/ENGINEER	\$1,125.00	\$1,125.00	\$900.00	TAP-200K	2028		
	\$1,125.00	\$1,125.00	\$900.00	TAP-5K	2028		
	\$1,125.00	\$1,125.00	\$900.00	TAPFLEX	2028		
	\$1,125.00	\$1,125.00	\$900.00	TAP-200K	2029		
	\$1,125.00	\$1,125.00	\$900.00	TAP-5K	2029		
	\$1,125.00	\$1,125.00	\$900.00	TAPFLEX	2029		
	\$1,125.00	\$1,125.00	\$900.00	TAP-200K	2030		
	\$1,125.00	\$1,125.00	\$900.00	TAP-5K	2030		
	\$1,125.00	\$1,125.00	\$900.00	TAPFLEX	2030		
	CONSTRUCTION	\$11,250.00	\$12,375.00	\$9,900.00	LOCAL	2027	
\$33,750.00		\$37,125.00	\$29,700.00	STCASH	2027		
\$11,250.00		\$12,375.00	\$9,900.00	TAP-200K	2027		
\$22,500.00		\$24,750.00	\$19,800.00	TAP-5K	2027		
\$22,500.00		\$24,750.00	\$19,800.00	TAPFLEX	2027		
\$22,500.00		\$24,750.00	\$19,800.00	LOCAL	2028		
\$67,500.00		\$74,250.00	\$59,400.00	STPENH	2028		
\$11,250.00		\$12,375.00	\$9,900.00	TAP-200K	2028		
\$11,250.00		\$12,375.00	\$9,900.00	TAP-5K	2028		
\$22,500.00		\$24,750.00	\$19,800.00	TAPFLEX	2028		
\$27,000.00		\$29,700.00	\$23,760.00	LOCAL	2029		
\$33,750.00		\$37,125.00	\$29,700.00	STCASH	2029		
\$7,875.00		\$8,662.50	\$6,930.00	STPENH	2029		
\$45,000.00		\$49,500.00	\$39,600.00	TAP-200K	2029		
\$29,250.00		\$32,175.00	\$25,740.00	TAP-5K	2029		
\$61,875.00		\$68,062.50	\$54,450.00	TAPFLEX	2029		
\$11,250.00		\$12,375.00	\$9,900.00	LOCAL	2030		
\$6,750.00		\$7,425.00	\$5,940.00	STPFLEX	2030		
\$90,000.00		\$99,000.00	\$79,200.00	TAP-200K	2030		
\$56,250.00		\$61,875.00	\$49,500.00	TAP-5K	2030		
\$15,750.00		\$17,325.00	\$13,860.00	TAPFLEX	2030		
<b>Total Cost</b>		<b>\$631,125.00</b>	<b>\$693,225.00</b>	<b>\$554,580.00</b>			

Project: L.000047 MISC NATIONAL TRAILS PROJECTS

Remarks		Type Improvement			Work Type	
IN STIP BY LINE ITEM, ONLY FOR REFERENCE						
Project Phase	Project Cost	Total Cost (w/CE&I+IDC)	Federal Share	Fund	Year	Sponsor
FEASIBILITY	\$3,375.00	\$3,375.00	\$2,700.00	RTP	2027	
	\$5,400.00	\$5,400.00	\$4,320.00	RTP	2028	
	\$3,375.00	\$3,375.00	\$2,700.00	RTP	2029	
DESIGN/ENGINEER	\$3,375.00	\$3,375.00	\$2,700.00	RTP	2030	
	\$562.50	\$562.50	\$450.00	RTP	2027	
	\$562.50	\$562.50	\$450.00	RTP	2028	
	\$562.50	\$562.50	\$450.00	RTP	2029	
CONSTRUCTION	\$562.50	\$562.50	\$450.00	RTP	2030	
	\$16,875.00	\$18,562.50	\$14,850.00	LOCAL	2027	
	\$33,750.00	\$37,125.00	\$29,700.00	RTP	2027	
	\$13,500.00	\$14,850.00	\$11,880.00	LOCAL	2028	
	\$33,750.00	\$37,125.00	\$29,700.00	RTP	2028	
	\$11,250.00	\$12,375.00	\$9,900.00	LOCAL	2029	
	\$47,250.00	\$51,975.00	\$41,580.00	RTP	2029	
	\$11,250.00	\$12,375.00	\$9,900.00	LOCAL	2030	
	\$33,750.00	\$37,125.00	\$29,700.00	RTP	2030	
	<b>Total Cost</b>	<b>\$219,150.00</b>	<b>\$239,287.50</b>	<b>\$191,430.00</b>		

Project: L.000048 SCENIC BYWAYS OF LA

Remarks		Type Improvement			Work Type	
IN STIP BY LINE ITEM, ONLY FOR REFERENCE						
Project Phase	Project Cost	Total Cost (w/CE&I+IDC)	Federal Share	Fund	Year	Sponsor
FEASIBILITY	\$7,875.00	\$7,875.00	\$6,300.00	NSB	2027	
	\$7,875.00	\$7,875.00	\$6,300.00	NSB	2028	
	\$7,875.00	\$7,875.00	\$6,300.00	NSB	2029	
DESIGN/ENGINEER	\$7,875.00	\$7,875.00	\$6,300.00	NSB	2030	
	\$7,875.00	\$7,875.00	\$6,300.00	NSB	2027	
	\$27,000.00	\$27,000.00	\$21,600.00	STCASH	2027	
	\$7,875.00	\$7,875.00	\$6,300.00	NSB	2028	
CONSTRUCTION	\$7,875.00	\$7,875.00	\$6,300.00	NSB	2029	
	\$7,875.00	\$7,875.00	\$6,300.00	NSB	2030	
	\$22,500.00	\$24,750.00	\$19,800.00	LOCAL	2027	
	\$5,625.00	\$6,187.50	\$4,950.00	NSB	2027	
	\$22,500.00	\$24,750.00	\$19,800.00	STCASH	2027	
	\$5,625.00	\$6,187.50	\$4,950.00	STPFLEX	2027	
	\$10,125.00	\$11,137.50	\$8,910.00	NSB	2028	
	\$10,125.00	\$11,137.50	\$8,910.00	NSB	2029	
	\$10,125.00	\$11,137.50	\$8,910.00	NSB	2030	
	<b>Total Cost</b>	<b>\$176,625.00</b>	<b>\$185,287.50</b>	<b>\$148,230.00</b>		

Project: L.000049 INDIAN RESERVATION ROADS

Remarks		Type Improvement			Work Type	
IN STIP BY LINE ITEM, ONLY FOR REFERENCE						
Project Phase	Project Cost	Total Cost (w/CE&I+IDC)	Federal Share	Fund	Year	Sponsor
DESIGN/ENGINEER	\$450.00	\$450.00	\$360.00	FLH	2027	
	\$450.00	\$450.00	\$360.00	FLH	2028	
	\$450.00	\$450.00	\$360.00	FLH	2029	
	\$450.00	\$450.00	\$360.00	FLH	2030	
CONSTRUCTION	\$9,000.00	\$9,900.00	\$7,920.00	FLH	2027	

	\$9,000.00	\$9,900.00	\$7,920.00	FLH	2028
	\$9,000.00	\$9,900.00	\$7,920.00	FLH	2029
	\$9,000.00	\$9,900.00	\$7,920.00	FLH	2030
<b>Total Cost</b>	<b>\$37,800.00</b>	<b>\$41,400.00</b>	<b>\$33,120.00</b>		

**Project: L.000050 LA PUBLIC LANDS HIGHWAY PROGRAM**

Remarks		Type Improvement			Work Type	
IN STIP BY LINE ITEM, ONLY FOR REFERENCE						
Project Phase	Project Cost	Total Cost (w/CE&+IDC)	Federal Share	Fund	Year	Sponsor
CONSTRUCTION	\$5,625.00	\$6,187.50	\$4,950.00	FLH	2027	
	\$90,000.00	\$99,000.00	\$79,200.00	FLH	2028	
	\$22,500.00	\$24,750.00	\$19,800.00	STP-5K	2028	
	\$112,500.00	\$123,750.00	\$99,000.00	FLH	2029	
	\$112,500.00	\$123,750.00	\$99,000.00	FLH	2030	
<b>Total Cost</b>	<b>\$343,125.00</b>	<b>\$377,437.50</b>	<b>\$301,950.00</b>			

**Project: L.000051 OVERLAY OR SURFACE REPAIR ON INTERSTATE**

Remarks		Type Improvement			Work Type	
IN STIP BY LINE ITEM, ONLY FOR REFERENCE						
Project Phase	Project Cost	Total Cost (w/CE&+IDC)	Federal Share	Fund	Year	Sponsor
ENVIRONMENTAL	\$1,125.00	\$1,125.00	\$900.00	NHPP	2027	
	\$1,125.00	\$1,125.00	\$900.00	NHPP	2028	
	\$1,125.00	\$1,125.00	\$900.00	NHPP	2029	
DESIGN/ENGINEER	\$1,125.00	\$1,125.00	\$900.00	NHPP	2030	
	\$22,500.00	\$22,500.00	\$18,000.00	NHPP	2027	
	\$22,500.00	\$22,500.00	\$18,000.00	NHPP	2028	
	\$22,500.00	\$22,500.00	\$18,000.00	NHPP	2029	
	\$22,500.00	\$22,500.00	\$18,000.00	NHPP	2030	
CONSTRUCTION	\$5,625.00	\$5,625.00	\$4,500.00	IM	2027	
	\$225,000.00	\$247,500.00	\$198,000.00	NHPP	2027	
	\$5,625.00	\$6,187.50	\$4,950.00	STP-5K	2027	
	\$16,875.00	\$18,562.50	\$14,850.00	STPFLEX	2027	
	\$11,250.00	\$12,375.00	\$9,900.00	DEMO	2028	
	\$346,500.00	\$381,150.00	\$304,920.00	NHPP	2028	
	\$33,750.00	\$37,125.00	\$29,700.00	STPFLEX	2028	
	\$675,000.00	\$742,500.00	\$594,000.00	NHPP	2029	
	\$675,000.00	\$742,500.00	\$594,000.00	NHPP	2030	
	<b>Total Cost</b>	<b>\$2,089,125.00</b>	<b>\$2,288,025.00</b>	<b>\$1,830,420.00</b>		

**Project: L.000053 STATEWIDE OVERLAY PROGRAM**

Remarks		Type Improvement			Work Type	
IN STIP BY LINE ITEM, ONLY FOR REFERENCE						
Project Phase	Project Cost	Total Cost (w/CE&+IDC)	Federal Share	Fund	Year	Sponsor
ENVIRONMENTAL	\$1,125.00	\$1,125.00	\$900.00	STPFLEX	2027	
	\$2,812.50	\$2,812.50	\$2,250.00	NHPP	2028	
	\$562.50	\$562.50	\$450.00	STPFLEX	2028	
RIGHT OF WAY	\$1,125.00	\$1,125.00	\$900.00	STPFLEX	2029	
	\$1,125.00	\$1,125.00	\$900.00	STPFLEX	2030	
	\$2,250.00	\$2,250.00	\$1,800.00	STPFLEX	2027	
	\$2,250.00	\$2,250.00	\$1,800.00	STPFLEX	2028	
	\$2,250.00	\$2,250.00	\$1,800.00	STPFLEX	2029	
	\$2,250.00	\$2,250.00	\$1,800.00	STPFLEX	2030	
UTILITY RELOCATION	\$25,312.50	\$25,312.50	\$20,250.00	NHPP	2027	
	\$10,687.50	\$10,687.50	\$8,550.00	STPFLEX	2027	
	\$11,250.00	\$11,250.00	\$9,000.00	LOCAL	2028	
	\$18,000.00	\$18,000.00	\$14,400.00	NHPP	2028	
	\$11,250.00	\$11,250.00	\$9,000.00	STPFLEX	2028	
	\$4,500.00	\$4,500.00	\$3,600.00	LOCAL	2029	
	\$7,875.00	\$7,875.00	\$6,300.00	NHPP	2029	
	\$2,250.00	\$2,250.00	\$1,800.00	STPFLEX	2029	
	\$18,000.00	\$18,000.00	\$14,400.00	STPFLEX	2030	
	\$3,375.00	\$3,375.00	\$2,700.00	NHPP	2027	
DESIGN/ENGINEER	\$3,375.00	\$3,375.00	\$2,700.00	STPFLEX	2027	
	\$3,375.00	\$3,375.00	\$2,700.00	NHPP	2028	
	\$3,375.00	\$3,375.00	\$2,700.00	STPFLEX	2028	
	\$2,250.00	\$2,250.00	\$1,800.00	DEMO	2029	
	\$3,375.00	\$3,375.00	\$2,700.00	NHPP	2029	
	\$3,375.00	\$3,375.00	\$2,700.00	STPFLEX	2029	
	\$3,375.00	\$3,375.00	\$2,700.00	NHPP	2030	
	\$3,375.00	\$3,375.00	\$2,700.00	STPFLEX	2030	
	\$67,500.00	\$74,250.00	\$59,400.00	HRRR	2027	
	\$5,625.00	\$6,187.50	\$4,950.00	HSIP	2027	
CONSTRUCTION	\$225,000.00	\$247,500.00	\$198,000.00	NFA	2027	
	\$675,000.00	\$742,500.00	\$594,000.00	NHPP	2027	
	\$2,250.00	\$2,475.00	\$1,980.00	SATRANS	2027	
	\$337,500.00	\$371,250.00	\$297,000.00	STBONDS	2027	
	\$22,500.00	\$24,750.00	\$19,800.00	STCASH	2027	
	\$33,750.00	\$37,125.00	\$29,700.00	STP50-200K	2027	
	\$135,000.00	\$148,500.00	\$118,800.00	STP-5K	2027	
	\$1,125,000.00	\$1,237,500.00	\$990,000.00	STPFLEX	2027	
	\$7,875.00	\$8,662.50	\$6,930.00	DEMO	2028	
	\$78,750.00	\$86,625.00	\$69,300.00	HRRR	2028	
	\$22,500.00	\$24,750.00	\$19,800.00	HSIP	2028	
	\$13,500.00	\$14,850.00	\$11,880.00	HSIPPEN	2028	
	\$11,250.00	\$12,375.00	\$9,900.00	LOCAL	2028	
	\$225,000.00	\$247,500.00	\$198,000.00	NFA	2028	
	\$1,687,500.00	\$1,856,250.00	\$1,485,000.00	NHPP	2028	
\$112,500.00	\$123,750.00	\$99,000.00	STBONDS	2028		
\$112,500.00	\$123,750.00	\$99,000.00	STCASH	2028		

	\$49,500.00	\$54,450.00	\$43,560.00	STGEN	2028
	\$337,500.00	\$371,250.00	\$297,000.00	STP50-200K	2028
	\$217,125.00	\$238,837.50	\$191,070.00	STP-5K	2028
	\$1,462,500.00	\$1,608,750.00	\$1,287,000.00	STPFLEX	2028
	\$180,000.00	\$198,000.00	\$158,400.00	COVID	2029
	\$22,500.00	\$24,750.00	\$19,800.00	DEMO	2029
	\$11,250.00	\$12,375.00	\$9,900.00	HRRR	2029
	\$45,000.00	\$49,500.00	\$39,600.00	HSIP	2029
	\$11,250.00	\$12,375.00	\$9,900.00	HSIPPEN	2029
	\$225,000.00	\$247,500.00	\$198,000.00	NFA	2029
	\$1,350,000.00	\$1,485,000.00	\$1,188,000.00	NHPP	2029
	\$112,500.00	\$123,750.00	\$99,000.00	STBONDS	2029
	\$50,625.00	\$55,687.50	\$44,550.00	STCASH	2029
	\$234,000.00	\$257,400.00	\$205,920.00	STP-5K	2029
	\$1,181,250.00	\$1,299,375.00	\$1,039,500.00	STPFLEX	2029
	\$450,000.00	\$495,000.00	\$396,000.00	COVID	2030
	\$22,500.00	\$24,750.00	\$19,800.00	DEMO	2030
	\$45,000.00	\$49,500.00	\$39,600.00	HSIP	2030
	\$225,000.00	\$247,500.00	\$198,000.00	NFA	2030
	\$1,125,000.00	\$1,237,500.00	\$990,000.00	NHPP	2030
	\$112,500.00	\$123,750.00	\$99,000.00	STBONDS	2030
	\$22,500.00	\$24,750.00	\$19,800.00	STCASH	2030
	\$33,750.00	\$37,125.00	\$29,700.00	STP50-200K	2030
	\$146,250.00	\$160,875.00	\$128,700.00	STP-5K	2030
	\$1,350,000.00	\$1,485,000.00	\$1,188,000.00	STPFLEX	2030
Total Cost	\$14,077,125.00	\$15,469,425.00	\$12,375,540.00		

Project: L.000054 ROAD PREVENTIVE MAINTENANCE PROGRAM

Remarks	Type Improvement		Work Type			
IN STIP BY LINE ITEM, ONLY FOR REFERENCE						
Project Phase	Project Cost	Total Cost (w/CE&+IDC)	Federal Share	Fund	Year	Sponsor
UTILITY RELOCATION	\$9,000.00	\$9,000.00	\$7,200.00	STPFLEX	2027	
	\$9,000.00	\$9,000.00	\$7,200.00	STPFLEX	2028	
	\$11,250.00	\$11,250.00	\$9,000.00	STPFLEX	2029	
CONSTRUCTION	\$9,000.00	\$9,000.00	\$7,200.00	STPFLEX	2030	
	\$11,250.00	\$12,375.00	\$9,900.00	DEMO	2027	
	\$11,250.00	\$12,375.00	\$9,900.00	NFA	2027	
	\$56,250.00	\$61,875.00	\$49,500.00	NHPP	2027	
	\$180,000.00	\$198,000.00	\$158,400.00	STPFLEX	2027	
	\$11,250.00	\$12,375.00	\$9,900.00	DEMO	2028	
	\$11,250.00	\$12,375.00	\$9,900.00	NFA	2028	
	\$33,750.00	\$37,125.00	\$29,700.00	NHPP	2028	
	\$50,625.00	\$55,687.50	\$44,550.00	STP50-200K	2028	
	\$11,250.00	\$12,375.00	\$9,900.00	STP-5K	2028	
	\$213,750.00	\$235,125.00	\$188,100.00	STPFLEX	2028	
	\$39,375.00	\$43,312.50	\$34,650.00	COVID	2029	
	\$11,250.00	\$12,375.00	\$9,900.00	NFA	2029	
	\$11,250.00	\$12,375.00	\$9,900.00	NHPP	2029	
	\$185,625.00	\$204,187.50	\$163,350.00	STPFLEX	2029	
	\$11,250.00	\$12,375.00	\$9,900.00	HSIP	2030	
	\$11,250.00	\$12,375.00	\$9,900.00	NFA	2030	
	\$90,000.00	\$99,000.00	\$79,200.00	NHPP	2030	
	\$78,750.00	\$86,625.00	\$69,300.00	STPFLEX	2030	
Total Cost	\$1,067,625.00	\$1,170,562.50	\$936,450.00			

Project: L.000055 RAILROAD CROSSING IMPROVEMENTS

Remarks	Type Improvement		Work Type			
IN STIP BY LINE ITEM, ONLY FOR REFERENCE						
Project Phase	Project Cost	Total Cost (w/CE&+IDC)	Federal Share	Fund	Year	Sponsor
FEASIBILITY	\$1,125.00	\$1,125.00	\$900.00	STCASH	2027	
	\$1,125.00	\$1,125.00	\$900.00	STCASH	2028	
	\$1,125.00	\$1,125.00	\$900.00	STCASH	2029	
	\$1,125.00	\$1,125.00	\$900.00	STCASH	2030	
ENVIRONMENTAL	\$1,125.00	\$1,125.00	\$900.00	STCASH	2027	
	\$1,125.00	\$1,125.00	\$900.00	STCASH	2028	
	\$1,125.00	\$1,125.00	\$900.00	STCASH	2029	
	\$1,125.00	\$1,125.00	\$900.00	STCASH	2030	
RIGHT OF WAY	\$1,125.00	\$1,125.00	\$900.00	LOCAL	2027	
	\$1,125.00	\$1,125.00	\$900.00	STCASH	2027	
	\$1,125.00	\$1,125.00	\$900.00	STCASH	2028	
	\$1,125.00	\$1,125.00	\$900.00	STCASH	2029	
	\$1,125.00	\$1,125.00	\$900.00	STCASH	2030	
UTILITY RELOCATION	\$2,250.00	\$2,250.00	\$1,800.00	LOCAL	2027	
	\$3,375.00	\$3,375.00	\$2,700.00	STCASH	2027	
	\$3,375.00	\$3,375.00	\$2,700.00	STCASH	2028	
	\$5,625.00	\$5,625.00	\$4,500.00	LOCAL	2029	
	\$45,000.00	\$45,000.00	\$36,000.00	STCASH	2029	
	\$3,375.00	\$3,375.00	\$2,700.00	STCASH	2030	
DESIGN/ENGINEER	\$2,250.00	\$2,250.00	\$1,800.00	STCASH	2027	
	\$2,250.00	\$2,250.00	\$1,800.00	STCASH	2028	
	\$2,250.00	\$2,250.00	\$1,800.00	STCASH	2029	
	\$2,250.00	\$2,250.00	\$1,800.00	STCASH	2030	
CONSTRUCTION	\$18,000.00	\$32,400.00	\$25,920.00	HSIP	2027	
	\$33,750.00	\$60,750.00	\$48,600.00	LOCAL	2027	
	\$168,750.00	\$303,750.00	\$243,000.00	STCASH	2027	
	\$33,750.00	\$60,750.00	\$48,600.00	LOCAL	2028	
	\$168,750.00	\$303,750.00	\$243,000.00	STCASH	2028	
	\$33,750.00	\$60,750.00	\$48,600.00	LOCAL	2029	
	\$168,750.00	\$303,750.00	\$243,000.00	STCASH	2029	
	\$33,750.00	\$60,750.00	\$48,600.00	LOCAL	2030	
	\$168,750.00	\$303,750.00	\$243,000.00	STCASH	2030	
Total Cost	\$914,625.00	\$1,577,025.00	\$1,261,620.00			

Project: L.000056 MISC HAZARD ELIMINATION AND SAFETY

Remarks		Type Improvement		Work Type			
IN STIP BY LINE ITEM, ONLY FOR REFERENCE							
Project Phase	Project Cost	Total Cost (w/CE&+IDC)	Federal Share	Fund	Year	Sponsor	
FEASIBILITY	\$2,250.00	\$2,250.00	\$1,800.00	HSIP	2027		
	\$6,750.00	\$6,750.00	\$5,400.00	HSIPPEN	2027		
	\$2,250.00	\$2,250.00	\$1,800.00	HSIP	2028		
	\$24,750.00	\$24,750.00	\$19,800.00	HSIPPEN	2028		
	\$7,875.00	\$7,875.00	\$6,300.00	STCASH	2028		
	\$2,250.00	\$2,250.00	\$1,800.00	HSIP	2029		
	\$18,000.00	\$18,000.00	\$14,400.00	HSIPPEN	2029		
	\$146,250.00	\$146,250.00	\$117,000.00	STCASH	2029		
	\$2,250.00	\$2,250.00	\$1,800.00	HSIP	2030		
	\$56,250.00	\$56,250.00	\$45,000.00	HSIPPEN	2030		
	\$11,250.00	\$11,250.00	\$9,000.00	STCASH	2030		
	ENVIRONMENTAL	\$3,375.00	\$3,375.00	\$2,700.00	HSIP	2027	
		\$1,125.00	\$1,125.00	\$900.00	HSIPPEN	2027	
		\$3,375.00	\$3,375.00	\$2,700.00	HSIP	2028	
		\$1,125.00	\$1,125.00	\$900.00	HSIPPEN	2028	
\$1,125.00		\$1,125.00	\$900.00	HSIP	2029		
\$3,375.00		\$3,375.00	\$2,700.00	HSIPPEN	2029		
\$1,462.50		\$1,462.50	\$1,170.00	SATRANS	2029		
\$3,375.00		\$3,375.00	\$2,700.00	HSIP	2030		
\$1,125.00		\$1,125.00	\$900.00	HSIPPEN	2030		
RIGHT OF WAY		\$45,000.00	\$45,000.00	\$36,000.00	HSIP	2027	
		\$22,500.00	\$22,500.00	\$18,000.00	HSIPPEN	2027	
		\$2,250.00	\$2,250.00	\$1,800.00	SATRANS	2027	
		\$11,250.00	\$11,250.00	\$9,000.00	STCASH	2027	
		\$84,375.00	\$84,375.00	\$67,500.00	HSIP	2028	
		\$11,250.00	\$11,250.00	\$9,000.00	HSIPPEN	2028	
	\$11,250.00	\$11,250.00	\$9,000.00	STCASH	2028		
	\$67,500.00	\$67,500.00	\$54,000.00	HSIP	2029		
	\$22,500.00	\$22,500.00	\$18,000.00	HSIPPEN	2029		
	\$2,250.00	\$2,250.00	\$1,800.00	SATRANS	2029		
	\$2,250.00	\$2,250.00	\$1,800.00	STCASH	2029		
	\$45,000.00	\$45,000.00	\$36,000.00	HSIP	2030		
	\$22,500.00	\$22,500.00	\$18,000.00	HSIPPEN	2030		
	\$45,000.00	\$45,000.00	\$36,000.00	HSIP	2027		
	UTILITY RELOCATION	\$22,500.00	\$22,500.00	\$18,000.00	HSIPPEN	2027	
\$45,000.00		\$45,000.00	\$36,000.00	HSIP	2027		
\$22,500.00		\$22,500.00	\$18,000.00	HSIPPEN	2027		
\$45,000.00		\$45,000.00	\$36,000.00	HSIP	2028		
\$22,500.00		\$22,500.00	\$18,000.00	HSIPPEN	2028		
\$33,750.00		\$33,750.00	\$27,000.00	HSIP	2029		
\$29,250.00		\$29,250.00	\$23,400.00	HSIPPEN	2029		
\$90,000.00		\$90,000.00	\$72,000.00	STCASH	2029		
\$5,625.00		\$5,625.00	\$4,500.00	STPFLEX	2029		
\$45,000.00		\$45,000.00	\$36,000.00	HSIP	2030		
\$22,500.00		\$22,500.00	\$18,000.00	HSIPPEN	2030		
DESIGN/ENGINEER		\$11,250.00	\$11,250.00	\$9,000.00	HSIP	2027	
		\$4,500.00	\$4,500.00	\$3,600.00	HSIPPEN	2027	
		\$18,000.00	\$18,000.00	\$14,400.00	SATRANS	2027	
		\$11,250.00	\$11,250.00	\$9,000.00	STCASH	2027	
	\$9,000.00	\$9,000.00	\$7,200.00	HSIP	2028		
	\$10,125.00	\$10,125.00	\$8,100.00	HSIPPEN	2028		
	\$20,250.00	\$20,250.00	\$16,200.00	HSIP	2029		
	\$4,500.00	\$4,500.00	\$3,600.00	HSIPPEN	2029		
	\$11,250.00	\$11,250.00	\$9,000.00	STCASH	2029		
	\$22,500.00	\$22,500.00	\$18,000.00	HSIP	2030		
	\$4,500.00	\$4,500.00	\$3,600.00	HSIPPEN	2030		
	CONSTRUCTION	\$399,375.00	\$499,312.50	\$351,450.00	HSIP	2027	
		\$303,750.00	\$334,125.00	\$267,300.00	HSIPPEN	2027	
		\$5,625.00	\$6,187.50	\$4,950.00	NHPP	2027	
		\$5,625.00	\$6,187.50	\$4,950.00	SATRANS	2027	
\$22,500.00		\$24,750.00	\$19,800.00	STCASH	2027		
\$483,750.00		\$532,125.00	\$425,700.00	HSIP	2028		
\$227,250.00		\$249,975.00	\$199,980.00	HSIPPEN	2028		
\$78,750.00		\$86,625.00	\$69,300.00	SATRANS	2028		
\$90,000.00		\$99,000.00	\$79,200.00	STCASH	2028		
\$11,250.00		\$12,375.00	\$9,900.00	TAP-5K	2028		
\$416,250.00		\$457,875.00	\$366,300.00	HSIP	2029		
\$427,500.00		\$470,250.00	\$376,200.00	HSIPPEN	2029		
\$67,500.00		\$74,250.00	\$59,400.00	STCASH	2029		
\$112,500.00		\$123,750.00	\$99,000.00	STPFLEX	2029		
\$11,250.00		\$12,375.00	\$9,900.00	TAP-5K	2029		
\$528,750.00	\$581,625.00	\$465,300.00	HSIP	2030			
\$450,000.00	\$495,000.00	\$396,000.00	HSIPPEN	2030			
\$11,250.00	\$12,375.00	\$9,900.00	NHPP	2030			
\$11,250.00	\$12,375.00	\$9,900.00	STCASH	2030			
<b>Total Cost</b>	<b>\$4,801,837.50</b>	<b>\$5,168,250.00</b>	<b>\$4,134,600.00</b>				

Project: L.000057 SOFT SIDE SAFETY

Remarks		Type Improvement		Work Type		
IN STIP BY LINE ITEM, ONLY FOR REFERENCE						
Project Phase	Project Cost	Total Cost (w/CE&+IDC)	Federal Share	Fund	Year	Sponsor
FEASIBILITY	\$5,625.00	\$5,625.00	\$4,500.00	HSIP	2027	
	\$16,875.00	\$16,875.00	\$13,500.00	HSIPPEN	2027	
	\$10,687.50	\$10,687.50	\$8,550.00	STCASH	2027	
	\$2,250.00	\$2,250.00	\$1,800.00	HSIP	2028	
	\$30,937.50	\$30,937.50	\$24,750.00	HSIPPEN	2028	
	\$11,250.00	\$11,250.00	\$9,000.00	STCASH	2028	
	\$2,250.00	\$2,250.00	\$1,800.00	STPFLEX	2028	
	\$65,250.00	\$65,250.00	\$52,200.00	HSIP	2029	
	\$16,875.00	\$16,875.00	\$13,500.00	HSIPPEN	2029	
	\$2,250.00	\$2,250.00	\$1,800.00	STPFLEX	2029	
	\$65,250.00	\$65,250.00	\$52,200.00	HSIP	2030	
	\$16,875.00	\$16,875.00	\$13,500.00	HSIPPEN	2030	

	\$2,250.00	\$2,250.00	\$1,800.00	STPFLEX	2030
Total Cost	\$248,625.00	\$248,625.00	\$198,900.00		

Project: L.000060 LOCAL ROADS SAFETY PROGRAM

Remarks	Type Improvement	Work Type
IN STIP BY LINE ITEM, ONLY FOR REFERENCE		

Project Phase	Project Cost	Total Cost (w/CE&I+HDC)	Federal Share	Fund	Year	Sponsor
FEASIBILITY	\$2,250.00	\$2,250.00	\$1,800.00	HSIPPEN	2028	
	\$3,600.00	\$3,600.00	\$2,880.00	STCASH	2028	
	\$3,285.00	\$3,285.00	\$2,628.00	HSIPPEN	2029	
	\$3,600.00	\$3,600.00	\$2,880.00	STCASH	2029	
	\$3,285.00	\$3,285.00	\$2,628.00	HSIPPEN	2030	
	\$3,600.00	\$3,600.00	\$2,880.00	STCASH	2030	
	\$225.00	\$225.00	\$180.00	HRRR	2027	
	\$2,025.00	\$2,025.00	\$1,620.00	HSIPPEN	2027	
	\$2,250.00	\$2,250.00	\$1,800.00	STCASH	2027	
	\$1,125.00	\$1,125.00	\$900.00	HRRR	2028	
RIGHT OF WAY	\$11,250.00	\$11,250.00	\$9,000.00	HSIPPEN	2028	
	\$2,250.00	\$2,250.00	\$1,800.00	HRRR	2029	
	\$225.00	\$225.00	\$180.00	HRRR	2030	
	\$900.00	\$900.00	\$720.00	HSIP	2030	
	\$1,125.00	\$1,125.00	\$900.00	HSIPPEN	2030	
	\$1,125.00	\$1,125.00	\$900.00	STCASH	2030	
	\$225.00	\$225.00	\$180.00	HRRR	2027	
	\$2,025.00	\$2,025.00	\$1,620.00	HSIPPEN	2027	
	\$2,250.00	\$2,250.00	\$1,800.00	STCASH	2027	
	\$2,250.00	\$2,250.00	\$1,800.00	HRRR	2028	
UTILITY RELOCATION	\$2,250.00	\$2,250.00	\$1,800.00	HRRR	2029	
	\$225.00	\$225.00	\$180.00	HRRR	2030	
	\$900.00	\$900.00	\$720.00	HSIP	2030	
	\$1,125.00	\$1,125.00	\$900.00	HSIPPEN	2030	
	\$1,125.00	\$1,125.00	\$900.00	STCASH	2030	
	\$225.00	\$225.00	\$180.00	HRRR	2027	
	\$2,025.00	\$2,025.00	\$1,620.00	HSIPPEN	2027	
	\$2,250.00	\$2,250.00	\$1,800.00	STCASH	2027	
	\$2,250.00	\$2,250.00	\$1,800.00	HRRR	2028	
	\$2,250.00	\$2,250.00	\$1,800.00	HRRR	2029	
DESIGN/ENGINEER	\$225.00	\$225.00	\$180.00	HRRR	2030	
	\$900.00	\$900.00	\$720.00	HSIP	2030	
	\$1,125.00	\$1,125.00	\$900.00	HSIPPEN	2030	
	\$1,125.00	\$1,125.00	\$900.00	STCASH	2030	
	\$225.00	\$225.00	\$180.00	HRRR	2027	
	\$2,025.00	\$2,025.00	\$1,620.00	HSIPPEN	2027	
	\$2,250.00	\$2,250.00	\$1,800.00	STCASH	2027	
	\$1,350.00	\$1,350.00	\$1,080.00	HRRR	2028	
	\$4,500.00	\$4,500.00	\$3,600.00	HSIPPEN	2028	
	\$2,250.00	\$2,250.00	\$1,800.00	STCASH	2028	
CONSTRUCTION	\$1,687.50	\$1,687.50	\$1,350.00	HRRR	2029	
	\$11,250.00	\$11,250.00	\$9,000.00	HSIPPEN	2029	
	\$4,500.00	\$4,500.00	\$3,600.00	STCASH	2029	
	\$900.00	\$900.00	\$720.00	HSIP	2030	
	\$5,625.00	\$5,625.00	\$4,500.00	HSIPPEN	2030	
	\$1,125.00	\$1,125.00	\$900.00	STCASH	2030	
	\$1,125.00	\$2,025.00	\$1,620.00	HRRR	2027	
	\$10,125.00	\$18,225.00	\$14,580.00	HSIPPEN	2027	
	\$2,250.00	\$4,050.00	\$3,240.00	STCASH	2027	
	\$2,250.00	\$4,050.00	\$3,240.00	HRRR	2028	
\$146,250.00	\$263,250.00	\$210,600.00	HSIPPEN	2028		
\$6,750.00	\$12,150.00	\$9,720.00	STCASH	2028		
\$11,250.00	\$20,250.00	\$16,200.00	HRRR	2029		
\$11,250.00	\$20,250.00	\$16,200.00	HSIP	2029		
\$149,625.00	\$269,325.00	\$215,460.00	HSIPPEN	2029		
\$2,250.00	\$4,050.00	\$3,240.00	LOCAL	2029		
\$562.50	\$1,012.50	\$810.00	HRRR	2030		
\$30,937.50	\$55,687.50	\$44,550.00	HSIP	2030		
\$33,750.00	\$60,750.00	\$48,600.00	HSIPPEN	2030		
\$11,250.00	\$20,250.00	\$16,200.00	LOCAL	2030		
\$11,250.00	\$20,250.00	\$16,200.00	STCASH	2030		
Total Cost	\$523,057.50	\$867,757.50	\$694,206.00			

Project: L.000061 SAFE ROUTES TO PUBLIC PLACES PROGRAM

Remarks	Type Improvement	Work Type
IN STIP BY LINE ITEM, ONLY FOR REFERENCE		

Project Phase	Project Cost	Total Cost (w/CE&I+HDC)	Federal Share	Fund	Year	Sponsor
FEASIBILITY	\$4,500.00	\$4,500.00	\$3,600.00	SR2S	2027	
	\$15,300.00	\$15,300.00	\$12,240.00	SR2S	2028	
	\$1,800.00	\$1,800.00	\$1,440.00	HSIPPEN	2029	
	\$2,250.00	\$2,250.00	\$1,800.00	SR2S	2029	
	\$6,750.00	\$6,750.00	\$5,400.00	STCASH	2029	
	\$2,250.00	\$2,250.00	\$1,800.00	SATRANS	2030	
	\$1,800.00	\$1,800.00	\$1,440.00	SR2S	2030	
	\$13,500.00	\$13,500.00	\$10,800.00	HSIPPEN	2027	
	\$4,500.00	\$4,500.00	\$3,600.00	SATRANS	2027	
	\$4,500.00	\$4,500.00	\$3,600.00	SR2S	2027	
DESIGN/ENGINEER	\$2,250.00	\$2,250.00	\$1,800.00	STCASH	2027	
	\$5,625.00	\$5,625.00	\$4,500.00	HSIPPEN	2028	
	\$4,500.00	\$4,500.00	\$3,600.00	SATRANS	2028	
	\$3,375.00	\$3,375.00	\$2,700.00	SR2S	2028	
	\$11,250.00	\$11,250.00	\$9,000.00	STCASH	2028	
	\$2,250.00	\$2,250.00	\$1,800.00	HSIPPEN	2029	
	\$4,500.00	\$4,500.00	\$3,600.00	SATRANS	2029	
	\$6,750.00	\$6,750.00	\$5,400.00	SR2S	2029	
	\$4,500.00	\$4,500.00	\$3,600.00	STCASH	2029	
	\$9,000.00	\$9,000.00	\$7,200.00	HSIPPEN	2030	
CONSTRUCTION	\$4,500.00	\$4,500.00	\$3,600.00	SATRANS	2030	
	\$2,250.00	\$2,250.00	\$1,800.00	SR2S	2030	
	\$4,500.00	\$4,500.00	\$3,600.00	STCASH	2030	
	\$57,375.00	\$63,112.50	\$50,490.00	HSIPPEN	2027	
	\$22,500.00	\$24,750.00	\$19,800.00	SATRANS	2027	
	\$45,000.00	\$49,500.00	\$39,600.00	SR2S	2027	
	\$22,500.00	\$24,750.00	\$19,800.00	STCASH	2027	
	\$45,000.00	\$49,500.00	\$39,600.00	HSIPPEN	2028	
	\$22,500.00	\$24,750.00	\$19,800.00	SATRANS	2028	

	\$22,500.00	\$24,750.00	\$19,800.00	SR2S	2028
	\$11,250.00	\$12,375.00	\$9,900.00	STCASH	2028
	\$16,875.00	\$18,562.50	\$14,850.00	HSIP	2029
	\$112,500.00	\$123,750.00	\$99,000.00	HSIPPEN	2029
	\$5,625.00	\$6,187.50	\$4,950.00	LOCAL	2029
	\$22,500.00	\$24,750.00	\$19,800.00	SATRANS	2029
	\$22,500.00	\$24,750.00	\$19,800.00	SR2S	2029
	\$22,500.00	\$24,750.00	\$19,800.00	STCASH	2029
	\$22,500.00	\$24,750.00	\$19,800.00	STPFLEX	2029
	\$73,125.00	\$80,437.50	\$64,350.00	HSIPPEN	2030
	\$2,250.00	\$2,475.00	\$1,980.00	N A	2030
	\$22,500.00	\$24,750.00	\$19,800.00	SATRANS	2030
	\$45,000.00	\$49,500.00	\$39,600.00	SR2S	2030
	\$5,625.00	\$6,187.50	\$4,950.00	STP<5K	2030
Total Cost	\$744,525.00	\$806,737.50	\$645,390.00		

Project: L.000062 MOTORIST ASSISTANCE PATROL (MAP)

Remarks	Type Improvement	Work Type
IN STIP BY LINE ITEM, ONLY FOR REFERENCE		

Project Phase	Project Cost	Total Cost (w/CE&+IDC)	Federal Share	Fund	Year	Sponsor
DESIGN/ENGINEER	\$1,125.00	\$1,125.00	\$900.00	NHPP	2027	
	\$1,125.00	\$1,125.00	\$900.00	NHPP	2028	
	\$1,125.00	\$1,125.00	\$900.00	NHPP	2029	
	\$1,125.00	\$1,125.00	\$900.00	NHPP	2030	
CONSTRUCTION	\$5,625.00	\$6,187.50	\$4,950.00	CM	2027	
	\$5,625.00	\$6,187.50	\$4,950.00	NHPP	2027	
	\$12,375.00	\$13,612.50	\$10,890.00	STP50-200K	2027	
	\$1,125.00	\$1,237.50	\$990.00	CM	2028	
	\$42,750.00	\$47,025.00	\$37,620.00	NHPP	2028	
	\$12,375.00	\$13,612.50	\$10,890.00	STP50-200K	2028	
	\$42,750.00	\$47,025.00	\$37,620.00	NHPP	2029	
	\$22,500.00	\$24,750.00	\$19,800.00	STP50-200K	2029	
	\$42,750.00	\$47,025.00	\$37,620.00	NHPP	2030	
	\$12,375.00	\$13,612.50	\$10,890.00	STP50-200K	2030	
Total Cost	\$204,750.00	\$224,775.00	\$179,820.00			

Project: L.000063 TRAFFIC CONTROL DEVICES PROGRAM

Remarks	Type Improvement	Work Type
IN STIP BY LINE ITEM, ONLY FOR REFERENCE		

Project Phase	Project Cost	Total Cost (w/CE&+IDC)	Federal Share	Fund	Year	Sponsor
FEASIBILITY	\$5,625.00	\$5,625.00	\$4,500.00	NHPP	2027	
	\$5,625.00	\$5,625.00	\$4,500.00	STPFLEX	2027	
	\$3,375.00	\$3,375.00	\$2,700.00	NHPP	2028	
	\$25,875.00	\$25,875.00	\$20,700.00	STPFLEX	2028	
	\$7,875.00	\$7,875.00	\$6,300.00	NHPP	2029	
	\$7,875.00	\$7,875.00	\$6,300.00	STPFLEX	2029	
	\$7,875.00	\$7,875.00	\$6,300.00	NHPP	2030	
	\$7,875.00	\$7,875.00	\$6,300.00	STPFLEX	2030	
DESIGN/ENGINEER	\$23,625.00	\$23,625.00	\$18,900.00	NHPP	2027	
	\$1,125.00	\$1,125.00	\$900.00	NHPP E	2027	
	\$5,625.00	\$5,625.00	\$4,500.00	STCASH	2027	
	\$9,000.00	\$9,000.00	\$7,200.00	STPFLEX	2027	
	\$13,500.00	\$13,500.00	\$10,800.00	NHPP	2028	
	\$6,750.00	\$6,750.00	\$5,400.00	STPFLEX	2028	
	\$13,500.00	\$13,500.00	\$10,800.00	NHPP	2029	
	\$6,750.00	\$6,750.00	\$5,400.00	STPFLEX	2029	
	\$6,750.00	\$6,750.00	\$5,400.00	NHPP	2030	
CONSTRUCTION	\$13,500.00	\$13,500.00	\$10,800.00	STPFLEX	2030	
	\$11,250.00	\$12,375.00	\$9,900.00	HSIP	2027	
	\$472,500.00	\$519,750.00	\$415,800.00	NHPP	2027	
	\$56,250.00	\$61,875.00	\$49,500.00	STCASH	2027	
	\$5,625.00	\$6,187.50	\$4,950.00	STP<5K	2027	
	\$146,250.00	\$160,875.00	\$128,700.00	STPFLEX	2027	
	\$2,250.00	\$2,475.00	\$1,980.00	HSIP	2028	
	\$112,500.00	\$123,750.00	\$99,000.00	HSIPPEN	2028	
	\$267,187.50	\$293,906.25	\$235,125.00	NHPP	2028	
	\$22,500.00	\$24,750.00	\$19,800.00	STCASH	2028	
	\$22,500.00	\$24,750.00	\$19,800.00	STP<5K	2028	
	\$112,500.00	\$123,750.00	\$99,000.00	STPFLEX	2028	
	\$11,250.00	\$12,375.00	\$9,900.00	HSIP	2029	
	\$247,500.00	\$272,250.00	\$217,800.00	HSIPPEN	2029	
	\$315,000.00	\$346,500.00	\$277,200.00	NHPP	2029	
	\$292,500.00	\$321,750.00	\$257,400.00	STPFLEX	2029	
	\$11,250.00	\$12,375.00	\$9,900.00	HSIP	2030	
	\$195,750.00	\$215,325.00	\$172,260.00	NHPP	2030	
	\$180,000.00	\$198,000.00	\$158,400.00	STPFLEX	2030	
Total Cost	\$2,656,687.50	\$2,905,143.75	\$2,324,115.00			

Project: L.000064 TRANSPORTATION SYSTEMS MANAGEMENT PROG

Remarks	Type Improvement	Work Type
IN STIP BY LINE ITEM, ONLY FOR REFERENCE		

Project Phase	Project Cost	Total Cost (w/CE&+IDC)	Federal Share	Fund	Year	Sponsor
ENVIRONMENTAL	\$675.00	\$675.00	\$540.00	NHPP	2028	
	\$450.00	\$450.00	\$360.00	STPFLEX	2028	
	\$1,125.00	\$1,125.00	\$900.00	STPFLEX	2029	
	\$1,125.00	\$1,125.00	\$900.00	STPFLEX	2030	
RIGHT OF WAY	\$2,250.00	\$2,250.00	\$1,800.00	NHPP	2027	
	\$900.00	\$900.00	\$720.00	STPFLEX	2027	
	\$2,812.50	\$2,812.50	\$2,250.00	STPFLEX	2028	

	\$12,375.00	\$12,375.00	\$9,900.00	STPFLEX	2029
	\$1,125.00	\$1,125.00	\$900.00	STPFLEX	2030
UTILITY RELOCATION	\$2,250.00	\$2,250.00	\$1,800.00	NHPP	2027
	\$1,125.00	\$1,125.00	\$900.00	STPFLEX	2027
	\$81,000.00	\$81,000.00	\$64,800.00	STPFLEX	2028
	\$7,200.00	\$7,200.00	\$5,760.00	NHPP	2029
	\$225.00	\$225.00	\$180.00	RAIL PD	2029
	\$450.00	\$450.00	\$360.00	STPFLEX	2029
DESIGN/ENGINEER	\$1,125.00	\$1,125.00	\$900.00	STPFLEX	2030
	\$1,125.00	\$1,125.00	\$900.00	STPFLEX	2028
CONSTRUCTION	\$11,250.00	\$11,250.00	\$9,000.00	NHPP	2029
	\$56,250.00	\$61,875.00	\$49,500.00	NHPP	2027
	\$7,875.00	\$8,662.50	\$6,930.00	STCASH	2027
	\$5,625.00	\$6,187.50	\$4,950.00	STP50-200K	2027
	\$11,250.00	\$12,375.00	\$9,900.00	STP-5K	2027
	\$123,750.00	\$136,125.00	\$108,900.00	STPFLEX	2027
	\$2,250.00	\$2,475.00	\$1,980.00	HSIPPEN	2028
	\$90,000.00	\$99,000.00	\$79,200.00	NHPP	2028
	\$22,500.00	\$24,750.00	\$19,800.00	STP50-200K	2028
	\$20,250.00	\$22,275.00	\$17,820.00	STP-5K	2028
	\$106,875.00	\$117,562.50	\$94,050.00	STPFLEX	2028
	\$27,000.00	\$29,700.00	\$23,760.00	COVID	2029
	\$11,250.00	\$12,375.00	\$9,900.00	HSIP	2029
	\$11,250.00	\$12,375.00	\$9,900.00	HSIPPEN	2029
	\$11,250.00	\$12,375.00	\$9,900.00	LOCAL	2029
	\$132,750.00	\$146,025.00	\$116,820.00	NHPP	2029
	\$2,250.00	\$2,475.00	\$1,980.00	STCASH	2029
	\$4,500.00	\$4,950.00	\$3,960.00	STP50-200K	2029
	\$121,500.00	\$133,650.00	\$106,920.00	STPFLEX	2029
	\$90,000.00	\$99,000.00	\$79,200.00	NHPP	2030
	\$22,500.00	\$24,750.00	\$19,800.00	STP50-200K	2030
	\$112,500.00	\$123,750.00	\$99,000.00	STPFLEX	2030
Total Cost	\$1,121,962.50	\$1,221,300.00	\$977,040.00		

Project: L.000065 ITS SYSTEMS (STATEWIDE)						
Remarks		Type Improvement			Work Type	
IN STIP BY LINE ITEM, ONLY FOR REFERENCE						
Project Phase	Project Cost	Total Cost (w/CE&I+IDC)	Federal Share	Fund	Year	Sponsor
FEASIBILITY	\$6,750.00	\$6,750.00	\$5,400.00	NHPP	2027	
	\$6,750.00	\$6,750.00	\$5,400.00	STCASH	2027	
	\$7,875.00	\$7,875.00	\$6,300.00	STPFLEX	2027	
	\$3,375.00	\$3,375.00	\$2,700.00	NHPP	2028	
	\$11,250.00	\$11,250.00	\$9,000.00	STPFLEX	2028	
	\$4,500.00	\$4,500.00	\$3,600.00	NHPP	2029	
	\$9,000.00	\$9,000.00	\$7,200.00	STPFLEX	2029	
	\$4,500.00	\$4,500.00	\$3,600.00	NHPP	2030	
	\$11,250.00	\$11,250.00	\$9,000.00	STPFLEX	2030	
	\$25,875.00	\$25,875.00	\$20,700.00	NHPP	2027	
DESIGN/ENGINEER	\$13,500.00	\$13,500.00	\$10,800.00	STPFLEX	2027	
	\$33,750.00	\$33,750.00	\$27,000.00	NHPP	2028	
	\$45,000.00	\$45,000.00	\$36,000.00	STPFLEX	2028	
	\$22,500.00	\$22,500.00	\$18,000.00	NHPP	2029	
	\$45,000.00	\$45,000.00	\$36,000.00	STPFLEX	2029	
	\$22,500.00	\$22,500.00	\$18,000.00	NHPP	2030	
	\$45,000.00	\$45,000.00	\$36,000.00	STPFLEX	2030	
	\$180,000.00	\$198,000.00	\$158,400.00	NHPP	2027	
	\$16,875.00	\$18,562.50	\$14,850.00	STPFLEX	2027	
	\$196,875.00	\$216,562.50	\$173,250.00	NHPP	2028	
CONSTRUCTION	\$22,500.00	\$24,750.00	\$19,800.00	STCASH	2028	
	\$78,750.00	\$86,625.00	\$69,300.00	STPFLEX	2028	
	\$247,500.00	\$272,250.00	\$217,800.00	NHPP	2029	
	\$78,750.00	\$86,625.00	\$69,300.00	STPFLEX	2029	
	\$135,000.00	\$148,500.00	\$118,800.00	NHPP	2030	
	\$78,750.00	\$86,625.00	\$69,300.00	STPFLEX	2030	
	Total Cost	\$1,353,375.00	\$1,456,875.00	\$1,165,500.00		

Project: L.000067 INTERSTATE LIGHTING, ELECTRICAL PROJECTS						
Remarks		Type Improvement			Work Type	
IN STIP BY LINE ITEM, ONLY FOR REFERENCE						
Project Phase	Project Cost	Total Cost (w/CE&I+IDC)	Federal Share	Fund	Year	Sponsor
DESIGN/ENGINEER	\$4,500.00	\$4,500.00	\$3,600.00	NHPP	2027	
	\$11,250.00	\$11,250.00	\$9,000.00	NHPP	2028	
	\$18,000.00	\$18,000.00	\$14,400.00	NHPP	2029	
	\$11,250.00	\$11,250.00	\$9,000.00	STCASH	2029	
CONSTRUCTION	\$9,000.00	\$9,000.00	\$7,200.00	NHPP	2030	
	\$90,000.00	\$99,000.00	\$79,200.00	NHPP	2027	
	\$67,500.00	\$74,250.00	\$59,400.00	NHPP	2028	
	\$67,500.00	\$74,250.00	\$59,400.00	NHPP	2029	
	\$123,750.00	\$136,125.00	\$108,900.00	NHPP	2030	
Total Cost	\$402,750.00	\$437,625.00	\$350,100.00			

Project: L.000068 ACCESS MANAGEMENT PROJECTS						
Remarks		Type Improvement			Work Type	
IN STIP BY LINE ITEM, ONLY FOR REFERENCE					OPER EFFICIENCY/MOTORIST ASSISTA	
Project Phase	Project Cost	Total Cost (w/CE&I+IDC)	Federal Share	Fund	Year	Sponsor
FEASIBILITY	\$13,500.00	\$13,500.00	\$10,800.00	NHPP	2027	
	\$9,000.00	\$9,000.00	\$7,200.00	STPFLEX	2027	
	\$6,750.00	\$6,750.00	\$5,400.00	NHPP	2028	
	\$20,250.00	\$20,250.00	\$16,200.00	STPFLEX	2028	

		\$37,125.00	\$37,125.00	\$29,700.00	NHPP	2029
		\$3,375.00	\$3,375.00	\$2,700.00	STPFLEX	2029
		\$11,250.00	\$11,250.00	\$9,000.00	NHPP	2030
		\$2,250.00	\$2,250.00	\$1,800.00	STPFLEX	2030
		\$1,125.00	\$1,125.00	\$900.00	NHPP	2027
		\$1,125.00	\$1,125.00	\$900.00	STPFLEX	2027
		\$1,125.00	\$1,125.00	\$900.00	NHPP	2028
		\$2,250.00	\$2,250.00	\$1,800.00	STPFLEX	2028
		\$1,125.00	\$1,125.00	\$900.00	NHPP	2029
		\$1,125.00	\$1,125.00	\$900.00	STPFLEX	2029
		\$1,125.00	\$1,125.00	\$900.00	NHPP	2030
		\$1,125.00	\$1,125.00	\$900.00	STPFLEX	2030
Right of Way		\$2,250.00	\$2,250.00	\$1,800.00	HSIP	2027
		\$6,750.00	\$6,750.00	\$5,400.00	NHPP	2027
		\$1,687.50	\$1,687.50	\$1,350.00	STCASH	2027
		\$9,000.00	\$9,000.00	\$7,200.00	STPFLEX	2027
		\$30,375.00	\$30,375.00	\$24,300.00	NHPP	2028
		\$14,625.00	\$14,625.00	\$11,700.00	STPFLEX	2028
		\$9,000.00	\$9,000.00	\$7,200.00	NHPP	2029
		\$73,125.00	\$73,125.00	\$58,500.00	STBONDS	2029
		\$33,750.00	\$33,750.00	\$27,000.00	STPFLEX	2029
		\$1,125.00	\$1,125.00	\$900.00	NHPP	2030
		\$16,875.00	\$16,875.00	\$13,500.00	STPFLEX	2030
UTILITY RELOCATION		\$18,562.50	\$18,562.50	\$14,850.00	HSIP	2027
		\$562.50	\$562.50	\$450.00	NHPP	2027
		\$21,375.00	\$21,375.00	\$17,100.00	STPFLEX	2027
		\$4,500.00	\$4,500.00	\$3,600.00	NHPP	2028
		\$22,500.00	\$22,500.00	\$18,000.00	STPFLEX	2028
		\$4,500.00	\$4,500.00	\$3,600.00	NHPP	2029
		\$13,500.00	\$13,500.00	\$10,800.00	STBONDS	2029
		\$18,000.00	\$18,000.00	\$14,400.00	STPFLEX	2029
		\$4,500.00	\$4,500.00	\$3,600.00	NHPP	2030
		\$4,500.00	\$4,500.00	\$3,600.00	STPFLEX	2030
DESIGN/ENGINEER		\$5,625.00	\$5,625.00	\$4,500.00	HSIP	2027
		\$11,250.00	\$11,250.00	\$9,000.00	NHPP	2027
		\$16,875.00	\$16,875.00	\$13,500.00	STPFLEX	2027
		\$24,750.00	\$24,750.00	\$19,800.00	NHPP	2028
		\$146.25	\$146.25	\$117.00	SATRANS	2028
		\$11,250.00	\$11,250.00	\$9,000.00	STPFLEX	2028
		\$6,750.00	\$6,750.00	\$5,400.00	NHPP	2029
		\$20,250.00	\$20,250.00	\$16,200.00	STPFLEX	2029
		\$11,250.00	\$11,250.00	\$9,000.00	NHPP	2030
		\$11,250.00	\$11,250.00	\$9,000.00	STPFLEX	2030
CONSTRUCTION		\$39,375.00	\$43,312.50	\$34,650.00	STP50-200K	2027
		\$5,625.00	\$6,187.50	\$4,950.00	STPFLEX	2027
		\$22,500.00	\$24,750.00	\$19,800.00	HSIP	2028
		\$2,250.00	\$2,475.00	\$1,980.00	NHPP	2028
		\$45,000.00	\$49,500.00	\$39,600.00	STCASH	2028
		\$33,750.00	\$37,125.00	\$29,700.00	STP50-200K	2028
		\$140,625.00	\$154,687.50	\$123,750.00	STPFLEX	2028
		\$33,750.00	\$37,125.00	\$29,700.00	HSIP	2029
		\$174,375.00	\$191,812.50	\$153,450.00	NHPP	2029
		\$2,250.00	\$2,475.00	\$1,980.00	STP50-200K	2029
		\$99,000.00	\$108,900.00	\$87,120.00	STPFLEX	2029
		\$45,000.00	\$49,500.00	\$39,600.00	NHPP	2030
		\$292,500.00	\$321,750.00	\$257,400.00	STBONDS	2030
		\$112,500.00	\$123,750.00	\$99,000.00	STPFLEX	2030
Total Cost		\$1,603,833.75	\$1,709,808.75	\$1,367,847.00		

Project: L.000069 ROAD TRANSFER PROGRAM

Remarks	Type Improvement	Work Type
IN STIP BY LINE ITEM, ONLY FOR REFERENCE		ROAD TRANSFER

Project Phase	Project Cost	Total Cost (w/CE&+IDC)	Federal Share	Fund	Year	Sponsor
ENVIRONMENTAL	\$562.50	\$562.50	\$450.00	STPFLEX	2028	
RIGHT OR WAY	\$4,500.00	\$4,500.00	\$3,600.00	NFA	2027	
	\$4,500.00	\$4,500.00	\$3,600.00	STPFLEX	2027	
	\$4,500.00	\$4,500.00	\$3,600.00	NFA	2028	
	\$4,500.00	\$4,500.00	\$3,600.00	STPFLEX	2028	
	\$4,500.00	\$4,500.00	\$3,600.00	NFA	2029	
	\$4,500.00	\$4,500.00	\$3,600.00	STPFLEX	2029	
	\$4,500.00	\$4,500.00	\$3,600.00	NFA	2030	
UTILITY RELOCATION	\$4,500.00	\$4,500.00	\$3,600.00	STPFLEX	2030	
	\$4,500.00	\$4,500.00	\$3,600.00	NFA	2027	
	\$11,250.00	\$11,250.00	\$9,000.00	STPFLEX	2027	
	\$4,500.00	\$4,500.00	\$3,600.00	NFA	2028	
	\$4,500.00	\$4,500.00	\$3,600.00	STPFLEX	2028	
	\$4,500.00	\$4,500.00	\$3,600.00	NFA	2029	
	\$11,250.00	\$11,250.00	\$9,000.00	STPFLEX	2029	
	\$4,500.00	\$4,500.00	\$3,600.00	NFA	2030	
DESIGN/ENGINEER	\$4,500.00	\$4,500.00	\$3,600.00	STPFLEX	2030	
	\$2,250.00	\$2,250.00	\$1,800.00	HSIP	2027	
	\$2,250.00	\$2,250.00	\$1,800.00	HSIPPEN	2027	
	\$2,250.00	\$2,250.00	\$1,800.00	NFA	2027	
	\$5,625.00	\$5,625.00	\$4,500.00	NHPP	2027	
	\$2,250.00	\$2,250.00	\$1,800.00	STPFLEX	2027	
	\$11,250.00	\$11,250.00	\$9,000.00	HSIP	2028	
	\$11,250.00	\$11,250.00	\$9,000.00	HSIPPEN	2028	
	\$11,250.00	\$11,250.00	\$9,000.00	NFA	2028	
	\$11,250.00	\$11,250.00	\$9,000.00	NHPP	2028	
	\$11,250.00	\$11,250.00	\$9,000.00	STPFLEX	2028	
	\$11,250.00	\$11,250.00	\$9,000.00	HSIP	2029	
	\$11,250.00	\$11,250.00	\$9,000.00	HSIPPEN	2029	
	\$11,250.00	\$11,250.00	\$9,000.00	NFA	2029	
	\$11,250.00	\$11,250.00	\$9,000.00	NHPP	2029	
	\$11,250.00	\$11,250.00	\$9,000.00	STPFLEX	2029	
	\$11,250.00	\$11,250.00	\$9,000.00	HSIP	2030	
	\$11,250.00	\$11,250.00	\$9,000.00	HSIPPEN	2030	
	\$11,250.00	\$11,250.00	\$9,000.00	NFA	2030	

CONSTRUCTION	\$11,250.00	\$11,250.00	\$9,000.00	NHPP	2030
	\$11,250.00	\$11,250.00	\$9,000.00	STCASH	2030
	\$11,250.00	\$11,250.00	\$9,000.00	STPFLEX	2030
	\$11,250.00	\$12,375.00	\$9,900.00	HSIP	2027
	\$11,250.00	\$12,375.00	\$9,900.00	HSIPPEN	2027
	\$337,500.00	\$371,250.00	\$297,000.00	NFA	2027
	\$157,500.00	\$173,250.00	\$138,600.00	NHPP	2027
	\$135,000.00	\$148,500.00	\$118,800.00	STPFLEX	2027
	\$11,250.00	\$12,375.00	\$9,900.00	HSIP	2028
	\$11,250.00	\$12,375.00	\$9,900.00	HSIPPEN	2028
	\$11,250.00	\$12,375.00	\$9,900.00	LOCAL	2028
	\$337,500.00	\$371,250.00	\$297,000.00	NFA	2028
	\$281,250.00	\$309,375.00	\$247,500.00	NHPP	2028
	\$11,250.00	\$12,375.00	\$9,900.00	STP50-200K	2028
	\$11,250.00	\$12,375.00	\$9,900.00	STP50-200K	2028
	\$123,750.00	\$136,125.00	\$108,900.00	STPFLEX	2028
	\$5,625.00	\$6,187.50	\$4,950.00	HSIP	2029
	\$5,625.00	\$6,187.50	\$4,950.00	HSIPPEN	2029
	\$56,250.00	\$61,875.00	\$49,500.00	LOCAL	2029
	\$292,500.00	\$321,750.00	\$257,400.00	NFA	2029
\$5,625.00	\$6,187.50	\$4,950.00	NHPP	2029	
\$5,625.00	\$6,187.50	\$4,950.00	STP50-200K	2029	
\$157,500.00	\$173,250.00	\$138,600.00	STPFLEX	2029	
\$11,250.00	\$12,375.00	\$9,900.00	HSIP	2030	
\$11,250.00	\$12,375.00	\$9,900.00	HSIPPEN	2030	
\$11,250.00	\$12,375.00	\$9,900.00	LOCAL	2030	
\$337,500.00	\$371,250.00	\$297,000.00	NFA	2030	
\$157,500.00	\$173,250.00	\$138,600.00	NHPP	2030	
\$157,500.00	\$173,250.00	\$138,600.00	STPFLEX	2030	
Total Cost	\$2,946,937.50	\$3,213,562.50	\$2,570,850.00		

Project: L.000070 INTERSTATE REST AREA REHABILITATION

Remarks	Type Improvement	Work Type				
IN STIP BY LINE ITEM, ONLY FOR REFERENCE						
Project Phase	Project Cost	Total Cost (w/CE&I+HDC)	Federal Share	Fund	Year	Sponsor
CONSTRUCTION	\$4,500.00	\$4,950.00	\$3,960.00	NHPP	2027	
	\$27,000.00	\$29,700.00	\$23,760.00	NHPP	2028	
	\$27,000.00	\$29,700.00	\$23,760.00	NHPP	2029	
	\$27,000.00	\$29,700.00	\$23,760.00	NHPP	2030	
Total Cost	\$85,500.00	\$94,050.00	\$75,240.00			

Project: L.000071 WEIGH STATION REHABILITATION / UPGRADE

Remarks	Type Improvement	Work Type				
IN STIP BY LINE ITEM, ONLY FOR REFERENCE						
Project Phase	Project Cost	Total Cost (w/CE&I+HDC)	Federal Share	Fund	Year	Sponsor
FEASIBILITY	\$1,462.50	\$1,462.50	\$1,170.00	NHPP	2028	
	\$562.50	\$562.50	\$450.00	NHPP	2029	
	\$562.50	\$562.50	\$450.00	NHPP	2030	
DESIGN/ENGINEER	\$3,375.00	\$3,375.00	\$2,700.00	NHPP	2028	
	\$3,375.00	\$3,375.00	\$2,700.00	NHPP	2029	
CONSTRUCTION	\$3,375.00	\$3,375.00	\$2,700.00	NHPP	2030	
	\$47,250.00	\$51,975.00	\$41,580.00	NHPP	2027	
	\$18,000.00	\$19,800.00	\$15,840.00	OTHER	2027	
	\$11,250.00	\$12,375.00	\$9,900.00	STP-5K	2027	
	\$1,125.00	\$1,237.50	\$990.00	NHPP	2028	
	\$1,125.00	\$1,237.50	\$990.00	STPFLEX	2028	
	\$28,125.00	\$30,937.50	\$24,750.00	NHPP	2029	
	\$1,125.00	\$1,237.50	\$990.00	STPFLEX	2029	
	\$11,250.00	\$12,375.00	\$9,900.00	NHPP	2030	
	\$1,125.00	\$1,237.50	\$990.00	STPFLEX	2030	
Total Cost	\$133,087.50	\$145,125.00	\$116,100.00			

Project: L.000072 MOVEABLE BRIDGE PROGRAM (ELEC/MECH)

Remarks	Type Improvement	Work Type				
IN STIP BY LINE ITEM, ONLY FOR REFERENCE						
Project Phase	Project Cost	Total Cost (w/CE&I+HDC)	Federal Share	Fund	Year	Sponsor
DESIGN/ENGINEER	\$2,250.00	\$2,250.00	\$1,800.00	STPFLEX	2027	
	\$2,250.00	\$2,250.00	\$1,800.00	STPFLEX	2028	
	\$2,250.00	\$2,250.00	\$1,800.00	STPFLEX	2029	
CONSTRUCTION	\$2,250.00	\$2,250.00	\$1,800.00	STPFLEX	2030	
	\$22.50	\$24.75	\$19.80	FBROFF	2027	
	\$6,750.00	\$7,425.00	\$5,940.00	NHPP	2027	
	\$11,250.00	\$12,375.00	\$9,900.00	STCASH	2027	
	\$6,750.00	\$7,425.00	\$5,940.00	STP50-200K	2027	
	\$31,500.00	\$34,650.00	\$27,720.00	STPFLEX	2027	
	\$16,897.50	\$18,587.25	\$14,869.80	FBROFF	2028	
	\$6,750.00	\$7,425.00	\$5,940.00	NHPP	2028	
	\$6,750.00	\$7,425.00	\$5,940.00	STP50-200K	2028	
	\$55,125.00	\$60,637.50	\$48,510.00	STPFLEX	2028	
	\$22.50	\$24.75	\$19.80	FBROFF	2029	
	\$6,750.00	\$7,425.00	\$5,940.00	STP50-200K	2029	
	\$38,250.00	\$42,075.00	\$33,660.00	STPFLEX	2029	
	\$22.50	\$24.75	\$19.80	FBROFF	2030	
	\$45,000.00	\$49,500.00	\$39,600.00	STPFLEX	2030	
Total Cost	\$240,840.00	\$264,024.00	\$211,219.20			

Project: L.000073 URGENT BRIDGE REPAIR/REPLACEMENT

Remarks		Type Improvement			Work Type	
IN STIP BY LINE ITEM, ONLY FOR REFERENCE						
Project Phase	Project Cost	Total Cost (w/CE&I+IDC)	Federal Share	Fund	Year	Sponsor
ENVIRONMENTAL	\$225.00	\$225.00	\$180.00	NHPP	2027	
	\$225.00	\$225.00	\$180.00	NHPP	2028	
	\$225.00	\$225.00	\$180.00	NHPP	2029	
UTILITY RELOCATION	\$225.00	\$225.00	\$180.00	NHPP	2030	
	\$225.00	\$225.00	\$180.00	NHPP	2027	
	\$225.00	\$225.00	\$180.00	NHPP	2028	
DESIGN/ENGINEER	\$225.00	\$225.00	\$180.00	NHPP	2029	
	\$5,625.00	\$5,625.00	\$4,500.00	NHPP	2027	
	\$22,500.00	\$22,500.00	\$18,000.00	REIMB	2027	
	\$5,625.00	\$5,625.00	\$4,500.00	STPFLEX	2027	
	\$11,250.00	\$11,250.00	\$9,000.00	NHPP	2028	
	\$22,500.00	\$22,500.00	\$18,000.00	REIMB	2028	
	\$11,250.00	\$11,250.00	\$9,000.00	STPFLEX	2028	
	\$45,000.00	\$45,000.00	\$36,000.00	NHPP	2029	
	\$22,500.00	\$22,500.00	\$18,000.00	REIMB	2029	
	\$45,000.00	\$45,000.00	\$36,000.00	STPFLEX	2029	
CONSTRUCTION	\$45,000.00	\$45,000.00	\$36,000.00	NHPP	2030	
	\$22,500.00	\$22,500.00	\$18,000.00	REIMB	2030	
	\$45,000.00	\$45,000.00	\$36,000.00	STPFLEX	2030	
	\$11,250.00	\$12,375.00	\$9,900.00	NHPP	2027	
	\$90,000.00	\$99,000.00	\$79,200.00	REIMB	2027	
	\$11,250.00	\$12,375.00	\$9,900.00	STPFLEX	2027	
	\$22,500.00	\$24,750.00	\$19,800.00	NHPP	2028	
	\$90,000.00	\$99,000.00	\$79,200.00	REIMB	2028	
	\$22,500.00	\$24,750.00	\$19,800.00	STP50-200K	2028	
	\$90,000.00	\$99,000.00	\$79,200.00	STPFLEX	2028	
	\$112,500.00	\$123,750.00	\$99,000.00	NHPP	2029	
	\$90,000.00	\$99,000.00	\$79,200.00	REIMB	2029	
	\$22,500.00	\$24,750.00	\$19,800.00	STP50-200K	2029	
	\$90,000.00	\$99,000.00	\$79,200.00	STPFLEX	2029	
	\$112,500.00	\$123,750.00	\$99,000.00	NHPP	2030	
\$90,000.00	\$99,000.00	\$79,200.00	REIMB	2030		
\$112,500.00	\$123,750.00	\$99,000.00	STPFLEX	2030		
<b>Total Cost</b>	<b>\$1,273,050.00</b>	<b>\$1,369,800.00</b>	<b>\$1,095,840.00</b>			

Project: L.000074 BRIDGE PREVENTIVE MAINTENANCE PROGRAM

Remarks		Type Improvement			Work Type	
IN STIP BY LINE ITEM, ONLY FOR REFERENCE						
Project Phase	Project Cost	Total Cost (w/CE&I+IDC)	Federal Share	Fund	Year	Sponsor
DESIGN/ENGINEER	\$13,500.00	\$13,500.00	\$10,800.00	NHPP	2027	
	\$13,500.00	\$13,500.00	\$10,800.00	STPFLEX	2027	
	\$13,500.00	\$13,500.00	\$10,800.00	NHPP	2028	
	\$13,500.00	\$13,500.00	\$10,800.00	STPFLEX	2028	
	\$27,000.00	\$27,000.00	\$21,600.00	NHPP	2029	
CONSTRUCTION	\$13,500.00	\$13,500.00	\$10,800.00	STPFLEX	2029	
	\$13,500.00	\$13,500.00	\$10,800.00	NHPP	2030	
	\$13,500.00	\$13,500.00	\$10,800.00	STPFLEX	2030	
	\$101,250.00	\$111,375.00	\$89,100.00	NHPP	2027	
	\$5,625.00	\$6,187.50	\$4,950.00	STPFLEX	2027	
	\$225,000.00	\$247,500.00	\$198,000.00	NHPP	2028	
	\$8,437.50	\$9,281.25	\$7,425.00	REIMBB	2028	
	\$112,500.00	\$123,750.00	\$99,000.00	STPFLEX	2028	
	\$112,500.00	\$123,750.00	\$99,000.00	NHPP	2029	
	\$225,000.00	\$247,500.00	\$198,000.00	STPFLEX	2029	
\$225,000.00	\$247,500.00	\$198,000.00	NHPP	2030		
\$112,500.00	\$123,750.00	\$99,000.00	STPFLEX	2030		
<b>Total Cost</b>	<b>\$1,249,312.50</b>	<b>\$1,362,093.75</b>	<b>\$1,089,675.00</b>			

Project: L.000075 BRIDGE PAINTING PROGRAM

Remarks		Type Improvement			Work Type	
IN STIP BY LINE ITEM, ONLY FOR REFERENCE						
Project Phase	Project Cost	Total Cost (w/CE&I+IDC)	Federal Share	Fund	Year	Sponsor
DESIGN/ENGINEER	\$11,250.00	\$11,250.00	\$9,000.00	NHPP	2027	
	\$11,250.00	\$11,250.00	\$9,000.00	STPFLEX	2027	
	\$11,250.00	\$11,250.00	\$9,000.00	NHPP	2028	
	\$11,250.00	\$11,250.00	\$9,000.00	SP	2028	
	\$11,250.00	\$11,250.00	\$9,000.00	NHPP	2029	
	\$11,250.00	\$11,250.00	\$9,000.00	STPFLEX	2029	
	\$11,250.00	\$11,250.00	\$9,000.00	NHPP	2030	
CONSTRUCTION	\$11,250.00	\$11,250.00	\$9,000.00	STPFLEX	2030	
	\$5,625.00	\$5,625.00	\$4,500.00	NHPP	2027	
	\$5,625.00	\$6,187.50	\$4,950.00	STPFLEX	2027	
	\$11,250.00	\$12,375.00	\$9,900.00	NHPP	2028	
	\$22,500.00	\$24,750.00	\$19,800.00	STPFLEX	2028	
	\$18,000.00	\$19,800.00	\$15,840.00	NHPP	2029	
	\$297,000.00	\$326,700.00	\$261,360.00	STPFLEX	2029	
	\$112,500.00	\$123,750.00	\$99,000.00	NHPP	2030	
	\$22,500.00	\$24,750.00	\$19,800.00	STPFLEX	2030	
	<b>Total Cost</b>	<b>\$585,000.00</b>	<b>\$633,937.50</b>	<b>\$507,150.00</b>		

Project: L.000076 ON-SYSTEM BRIDGE PROGRAM w CE

Remarks		Type Improvement			Work Type	
IN STIP BY LINE ITEM, ONLY FOR REFERENCE						

Project Phase	Project Cost	Total Cost (w/CE&+IDC)	Federal Share	Fund	Year	Sponsor	
FEASIBILITY	\$2,250.00	\$2,250.00	\$1,800.00	FBROFF	2027		
	\$2,250.00	\$2,250.00	\$1,800.00	NHPP	2027		
	\$2,250.00	\$2,250.00	\$1,800.00	STPFLEX	2027		
	\$2,250.00	\$2,250.00	\$1,800.00	FBROFF	2028		
	\$2,250.00	\$2,250.00	\$1,800.00	NHPP	2028		
	\$2,250.00	\$2,250.00	\$1,800.00	STPFLEX	2028		
	\$2,250.00	\$2,250.00	\$1,800.00	FBROFF	2029		
	\$2,250.00	\$2,250.00	\$1,800.00	NHPP	2029		
	\$2,250.00	\$2,250.00	\$1,800.00	STPFLEX	2029		
	\$2,250.00	\$2,250.00	\$1,800.00	FBROFF	2030		
	\$2,250.00	\$2,250.00	\$1,800.00	NHPP	2030		
	\$2,250.00	\$2,250.00	\$1,800.00	STPFLEX	2030		
	ENVIRONMENTAL	\$6,750.00	\$6,750.00	\$5,400.00	FBROFF	2027	
		\$9,000.00	\$9,000.00	\$7,200.00	NHPP	2027	
		\$6,750.00	\$6,750.00	\$5,400.00	STPFLEX	2027	
\$6,750.00		\$6,750.00	\$5,400.00	FBROFF	2028		
\$4,500.00		\$4,500.00	\$3,600.00	LOCAL	2028		
\$9,000.00		\$9,000.00	\$7,200.00	NHPP	2028		
\$6,750.00		\$6,750.00	\$5,400.00	STPFLEX	2028		
\$6,750.00		\$6,750.00	\$5,400.00	FBROFF	2029		
\$9,000.00		\$9,000.00	\$7,200.00	NHPP	2029		
\$6,750.00		\$6,750.00	\$5,400.00	STPFLEX	2029		
\$6,750.00		\$6,750.00	\$5,400.00	FBROFF	2030		
\$22,500.00		\$22,500.00	\$18,000.00	NHPP	2030		
\$6,750.00		\$6,750.00	\$5,400.00	STPFLEX	2030		
RIGHT OF WAY		\$22,500.00	\$22,500.00	\$18,000.00	FBROFF	2027	
		\$11,250.00	\$11,250.00	\$9,000.00	NHPP	2027	
	\$22,500.00	\$22,500.00	\$18,000.00	STCASH	2027		
	\$11,250.00	\$11,250.00	\$9,000.00	STP-5K	2027		
	\$22,500.00	\$22,500.00	\$18,000.00	STPFLEX	2027		
	\$22,500.00	\$22,500.00	\$18,000.00	FBROFF	2028		
	\$22,500.00	\$22,500.00	\$18,000.00	NHPP	2028		
	\$67,500.00	\$67,500.00	\$54,000.00	STPFLEX	2028		
	\$11,250.00	\$11,250.00	\$9,000.00	FBR-200K-E	2029		
	\$36,000.00	\$36,000.00	\$28,800.00	FBROFF	2029		
	\$11,250.00	\$11,250.00	\$9,000.00	NHPP	2029		
	\$11,250.00	\$11,250.00	\$9,000.00	STCASH	2029		
	\$22,500.00	\$22,500.00	\$18,000.00	STP-5K	2029		
	\$45,000.00	\$45,000.00	\$36,000.00	STPFLEX	2029		
	\$22,500.00	\$22,500.00	\$18,000.00	FBROFF	2030		
UTILITY RELOCATION	\$45,000.00	\$45,000.00	\$36,000.00	NHPP	2030		
	\$45,000.00	\$45,000.00	\$36,000.00	STPFLEX	2030		
	\$27,000.00	\$27,000.00	\$21,600.00	FBROFF	2027		
	\$22,500.00	\$22,500.00	\$18,000.00	NHPP	2027		
	\$6,750.00	\$6,750.00	\$5,400.00	STP-5K	2027		
	\$56,250.00	\$56,250.00	\$45,000.00	STPFLEX	2027		
	\$11,250.00	\$11,250.00	\$9,000.00	FBROFF	2028		
	\$2,250.00	\$2,250.00	\$1,800.00	LOCAL	2028		
	\$22,500.00	\$22,500.00	\$18,000.00	NHPP	2028		
	\$2,250.00	\$2,250.00	\$1,800.00	STP-5K	2028		
	\$140,625.00	\$140,625.00	\$112,500.00	STPFLEX	2028		
	\$27,000.00	\$27,000.00	\$21,600.00	FBROFF	2029		
	\$5,625.00	\$5,625.00	\$4,500.00	NHPP	2029		
	\$5,625.00	\$5,625.00	\$4,500.00	STP-5K	2029		
	\$22,500.00	\$22,500.00	\$18,000.00	STP-5K-E	2029		
DESIGN/ENGINEER	\$29,250.00	\$29,250.00	\$23,400.00	STPFLEX	2029		
	\$11,250.00	\$11,250.00	\$9,000.00	FBROFF	2030		
	\$45,000.00	\$45,000.00	\$36,000.00	NHPP	2030		
	\$33,750.00	\$33,750.00	\$27,000.00	STPFLEX	2030		
	\$5,625.00	\$5,625.00	\$4,500.00	FBROFF	2027		
	\$40,500.00	\$40,500.00	\$32,400.00	NHPP	2027		
	\$450.00	\$450.00	\$360.00	STCASH	2027		
	\$5,625.00	\$5,625.00	\$4,500.00	STP-5K-E	2027		
	\$11,250.00	\$11,250.00	\$9,000.00	STPFLEX	2027		
	\$13,500.00	\$13,500.00	\$10,800.00	FBR-200K-E	2028		
	\$73,125.00	\$73,125.00	\$58,500.00	FBROFF	2028		
	\$45,000.00	\$45,000.00	\$36,000.00	NHPP	2028		
	\$9,000.00	\$9,000.00	\$7,200.00	REIMB	2028		
	\$900.00	\$900.00	\$720.00	STCASH	2028		
	\$33,750.00	\$33,750.00	\$27,000.00	STP-5K	2028		
\$100,125.00	\$100,125.00	\$80,100.00	STP-5K-E	2028			
\$45,000.00	\$45,000.00	\$36,000.00	STPFLEX	2028			
\$200,250.00	\$200,250.00	\$160,200.00	FBROFF	2029			
\$3,375.00	\$3,375.00	\$2,700.00	LOCAL	2029			
\$123,750.00	\$123,750.00	\$99,000.00	NFA	2029			
\$45,000.00	\$45,000.00	\$36,000.00	NHPP	2029			
\$13,500.00	\$13,500.00	\$10,800.00	REIMB	2029			
\$11,250.00	\$11,250.00	\$9,000.00	STCASH	2029			
\$16,875.00	\$16,875.00	\$13,500.00	STP-5K	2029			
\$379,687.50	\$379,687.50	\$303,750.00	STPFLEX	2029			
\$22,500.00	\$22,500.00	\$18,000.00	FBROFF	2030			
\$45,000.00	\$45,000.00	\$36,000.00	NHPP	2030			
\$45,000.00	\$45,000.00	\$36,000.00	STPFLEX	2030			
CONSTRUCTION	\$180,000.00	\$198,000.00	\$158,400.00	FBROFF	2027		
	\$5,625.00	\$6,187.50	\$4,950.00	HSIP	2027		
	\$135,000.00	\$148,500.00	\$118,800.00	NHPP	2027		
	\$11,250.00	\$12,375.00	\$9,900.00	REIMB	2027		
	\$270,000.00	\$297,000.00	\$237,600.00	STCASH	2027		
	\$5,625.00	\$6,187.50	\$4,950.00	STP-5K	2027		
	\$67,500.00	\$74,250.00	\$59,400.00	STP-5K-E	2027		
	\$1,275,750.00	\$1,403,325.00	\$1,122,660.00	STPFLEX	2027		
	\$270,000.00	\$297,000.00	\$237,600.00	FBROFF	2028		
	\$11,250.00	\$12,375.00	\$9,900.00	NFA	2028		
	\$3,015,000.00	\$3,316,500.00	\$2,653,200.00	NHPP	2028		
	\$405,000.00	\$445,500.00	\$356,400.00	NHPP-E	2028		
	\$22,500.00	\$24,750.00	\$19,800.00	REIMB	2028		
	\$630,000.00	\$693,000.00	\$554,400.00	STCASH	2028		
	\$360,000.00	\$396,000.00	\$316,800.00	STP50-200K	2028		
\$360,000.00	\$396,000.00	\$316,800.00	STP-5K	2028			
\$1,035,000.00	\$1,138,500.00	\$910,800.00	STPFLEX	2028			
\$67,500.00	\$74,250.00	\$59,400.00	DEMO	2029			
\$675,000.00	\$742,500.00	\$594,000.00	FBROFF	2029			

	\$33,750.00	\$37,125.00	\$29,700.00	HSIP	2029
	\$33,750.00	\$37,125.00	\$29,700.00	NFA	2029
	\$450,000.00	\$495,000.00	\$396,000.00	NHPP	2029
	\$11,250.00	\$12,375.00	\$9,900.00	OTHER	2029
	\$22,500.00	\$24,750.00	\$19,800.00	REIMB	2029
	\$1,125,000.00	\$1,237,500.00	\$990,000.00	STCASH	2029
	\$33,750.00	\$37,125.00	\$29,700.00	STP50-200K	2029
	\$292,500.00	\$321,750.00	\$257,400.00	STP-5K	2029
	\$697,500.00	\$767,250.00	\$613,800.00	STPFLEX	2029
	\$450,000.00	\$495,000.00	\$396,000.00	STPFLEX-E	2029
	\$450,000.00	\$495,000.00	\$396,000.00	TIFIA	2029
	\$225,000.00	\$247,500.00	\$198,000.00	DEMO	2030
	\$11,250.00	\$12,375.00	\$9,900.00	ER	2030
	\$607,500.00	\$668,250.00	\$534,600.00	FBR-200K-E	2030
	\$450,000.00	\$495,000.00	\$396,000.00	FBROFF	2030
	\$562,500.00	\$618,750.00	\$495,000.00	NHPP	2030
	\$45,000.00	\$49,500.00	\$39,600.00	REIMB	2030
	\$33,750.00	\$37,125.00	\$29,700.00	STP-200K	2030
	\$11,250.00	\$12,375.00	\$9,900.00	STP-5K-E	2030
	\$660,937.50	\$727,031.25	\$581,625.00	STPFLEX	2030
Total Cost	\$17,357,850.00	\$18,858,768.75	\$15,087,015.00		

Project: L.000077 BRIDGE SCOUR ANALYSIS

Remarks	Type Improvement		Work Type			
IN STIP BY LINE ITEM, ONLY FOR REFERENCE						
Project Phase	Project Cost	Total Cost (w/CE&I+HDC)	Federal Share	Fund	Year	Sponsor
DESIGN/ENGINEER	\$1,125.00	\$1,125.00	\$900.00	NHPP	2027	
	\$1,125.00	\$1,125.00	\$900.00	NHPP	2028	
CONSTRUCTION	\$1,125.00	\$1,125.00	\$900.00	NHPP	2029	
	\$1,125.00	\$1,125.00	\$900.00	NHPP	2030	
	\$1,125.00	\$1,237.50	\$990.00	NHPP	2027	
	\$1,125.00	\$1,237.50	\$990.00	NHPP	2028	
	\$1,125.00	\$1,237.50	\$990.00	NHPP	2029	
	\$1,125.00	\$1,237.50	\$990.00	NHPP	2030	
Total Cost	\$9,000.00	\$9,450.00	\$7,560.00			

Project: L.000078 OFF-SYSTEM BRIDGE REPLACEMENT PROGRAM

Remarks	Type Improvement		Work Type			
IN STIP BY LINE ITEM, ONLY FOR REFERENCE						
Project Phase	Project Cost	Total Cost (w/CE&I+HDC)	Federal Share	Fund	Year	Sponsor
ENVIRONMENTAL	\$4,500.00	\$4,500.00	\$3,600.00	FBROFF	2027	
	\$4,500.00	\$4,500.00	\$3,600.00	FBROFF	2028	
RIGHT OF WAY	\$4,500.00	\$4,500.00	\$3,600.00	FBROFF	2029	
	\$4,500.00	\$4,500.00	\$3,600.00	FBROFF	2030	
CONSTRUCTION	\$22,500.00	\$22,500.00	\$18,000.00	FBROFF	2029	
	\$22,500.00	\$22,500.00	\$18,000.00	FBROFF	2030	
	\$6,750.00	\$6,750.00	\$5,400.00	FBROFF	2027	
	\$5,625.00	\$5,625.00	\$4,500.00	STP-5K-E	2027	
	\$11,250.00	\$11,250.00	\$9,000.00	FBR-200K-E	2028	
	\$15,750.00	\$15,750.00	\$12,600.00	FBROFF	2028	
	\$60,750.00	\$60,750.00	\$48,600.00	STP-5K-E	2028	
	\$57,375.00	\$57,375.00	\$45,900.00	FBROFF	2029	
	\$4,500.00	\$4,500.00	\$3,600.00	STPFLEX	2029	
	\$31,500.00	\$31,500.00	\$25,200.00	FBROFF	2030	
CONSTRUCTION	\$2,250.00	\$2,250.00	\$1,800.00	STPFLEX	2030	
	\$281,250.00	\$309,375.00	\$247,500.00	FBROFF	2027	
	\$33,750.00	\$37,125.00	\$29,700.00	STCASH	2027	
	\$5,625.00	\$6,187.50	\$4,950.00	STP50-200K	2027	
	\$11,250.00	\$12,375.00	\$9,900.00	STPFLEX	2027	
	\$562,500.00	\$618,750.00	\$495,000.00	FBROFF	2028	
	\$56,250.00	\$61,875.00	\$49,500.00	STCASH	2028	
	\$450,000.00	\$495,000.00	\$396,000.00	STGEN	2028	
	\$45,000.00	\$49,500.00	\$39,600.00	STP50-200K	2028	
	\$495,000.00	\$544,500.00	\$435,600.00	FBROFF	2029	
\$22,500.00	\$24,750.00	\$19,800.00	STCASH	2029		
\$450,000.00	\$495,000.00	\$396,000.00	STGEN	2029		
\$495,000.00	\$544,500.00	\$435,600.00	FBROFF	2030		
\$450,000.00	\$495,000.00	\$396,000.00	STGEN	2030		
Total Cost	\$3,616,875.00	\$3,952,687.50	\$3,162,150.00			

Project: L.000079 BRIDGE DISCRETIONARY PROGRAM

Remarks	Type Improvement		Work Type			
IN STIP BY LINE ITEM, ONLY FOR REFERENCE						
Project Phase	Project Cost	Total Cost (w/CE&I+HDC)	Federal Share	Fund	Year	Sponsor
DESIGN/ENGINEER	\$450.00	\$450.00	\$360.00	BDP	2027	
	\$450.00	\$450.00	\$360.00	BDP	2028	
CONSTRUCTION	\$450.00	\$450.00	\$360.00	BDP	2029	
	\$450.00	\$450.00	\$360.00	BDP	2030	
	\$2,250.00	\$2,475.00	\$1,980.00	BDP	2027	
	\$2,250.00	\$2,475.00	\$1,980.00	BDP	2028	
	\$2,250.00	\$2,475.00	\$1,980.00	BDP	2029	
	\$2,250.00	\$2,475.00	\$1,980.00	BDP	2030	
Total Cost	\$10,800.00	\$11,700.00	\$9,360.00			

Project: L.000080 MISC FEDERAL DISCRETIONARY PROJECTS

Remarks	Type Improvement		Work Type		
---------	------------------	--	-----------	--	--

IN STIP BY LINE ITEM, ONLY FOR REFERENCE

Project Phase	Project Cost	Total Cost (w/CE&+HDC)	Federal Share	Fund	Year	Sponsor
DESIGN/ENGINEER	\$2,250.00	\$2,250.00	\$1,800.00	FLH	2027	
	\$2,250.00	\$2,250.00	\$1,800.00	FLH	2028	
	\$2,250.00	\$2,250.00	\$1,800.00	FLH	2029	
CONSTRUCTION	\$2,250.00	\$2,250.00	\$1,800.00	FLH	2030	
	\$9,000.00	\$9,900.00	\$7,920.00	STP-5K	2027	
	\$4,500.00	\$4,950.00	\$3,960.00	FLH	2027	
	\$2,250.00	\$2,475.00	\$1,980.00	FLH	2028	
	\$2,250.00	\$2,475.00	\$1,980.00	FLH	2029	
	\$2,250.00	\$2,475.00	\$1,980.00	FLH	2030	
<b>Total Cost</b>	<b>\$29,250.00</b>	<b>\$31,275.00</b>	<b>\$25,020.00</b>			

Project: L.000081 VARIOUS DEMO PROJECTS

Remarks	Type Improvement	Work Type
IN STIP BY LINE ITEM, ONLY FOR REFERENCE		

Project Phase	Project Cost	Total Cost (w/CE&+HDC)	Federal Share	Fund	Year	Sponsor
FEASIBILITY	\$4,500.00	\$4,500.00	\$3,600.00	DEMO	2027	
	\$4,050.00	\$4,050.00	\$3,240.00	DEMO	2028	
	\$450.00	\$450.00	\$360.00	RAIL HE	2028	
	\$1,125.00	\$1,125.00	\$900.00	STCASH	2028	
	\$4,500.00	\$4,500.00	\$3,600.00	DEMO	2029	
ENVIRONMENTAL	\$4,500.00	\$4,500.00	\$3,600.00	DEMO	2030	
	\$4,500.00	\$4,500.00	\$3,600.00	DEMO	2027	
	\$4,500.00	\$4,500.00	\$3,600.00	DEMO	2028	
	\$4,500.00	\$4,500.00	\$3,600.00	DEMO	2029	
RIGHT OF WAY	\$4,500.00	\$4,500.00	\$3,600.00	DEMO	2030	
	\$4,500.00	\$4,500.00	\$3,600.00	DEMO	2027	
	\$4,500.00	\$4,500.00	\$3,600.00	DEMO	2028	
UTILITY RELOCATION	\$4,500.00	\$4,500.00	\$3,600.00	DEMO	2029	
	\$4,500.00	\$4,500.00	\$3,600.00	DEMO	2030	
	\$4,500.00	\$4,500.00	\$3,600.00	DEMO	2027	
	\$3,375.00	\$3,375.00	\$2,700.00	DEMO	2028	
	\$1,125.00	\$1,125.00	\$900.00	HSIP	2028	
DESIGN/ENGINEER	\$3,375.00	\$3,375.00	\$2,700.00	DEMO	2029	
	\$1,125.00	\$1,125.00	\$900.00	HSIP	2029	
	\$4,500.00	\$4,500.00	\$3,600.00	DEMO	2030	
	\$4,500.00	\$4,500.00	\$3,600.00	DEMO	2027	
CONSTRUCTION	\$18,000.00	\$18,000.00	\$14,400.00	DEMO	2028	
	\$4,500.00	\$4,500.00	\$3,600.00	DEMO	2029	
	\$4,500.00	\$4,500.00	\$3,600.00	DEMO	2030	
	\$85,500.00	\$94,050.00	\$75,240.00	DEMO	2027	
	\$27,000.00	\$29,700.00	\$23,760.00	STPFLEX	2027	
	\$78,750.00	\$86,625.00	\$69,300.00	DEMO	2028	
	\$33,750.00	\$37,125.00	\$29,700.00	HSIP	2028	
	\$78,750.00	\$86,625.00	\$69,300.00	DEMO	2029	
\$33,750.00	\$37,125.00	\$29,700.00	HSIP	2029		
\$112,500.00	\$123,750.00	\$99,000.00	DEMO	2030		
<b>Total Cost</b>	<b>\$554,625.00</b>	<b>\$599,625.00</b>	<b>\$479,700.00</b>			

Project: L.000082 MISC STATEWIDE TCSP PROJECTS

Remarks	Type Improvement	Work Type
IN STIP BY LINE ITEM, ONLY FOR REFERENCE		

Project Phase	Project Cost	Total Cost (w/CE&+HDC)	Federal Share	Fund	Year	Sponsor
RIGHT OF WAY	\$1,125.00	\$1,125.00	\$900.00	TCSP	2027	
	\$1,125.00	\$1,125.00	\$900.00	TCSP	2028	
	\$1,125.00	\$1,125.00	\$900.00	TCSP	2029	
UTILITY RELOCATION	\$1,125.00	\$1,125.00	\$900.00	TCSP	2030	
	\$1,125.00	\$1,125.00	\$900.00	TCSP	2027	
	\$1,125.00	\$1,125.00	\$900.00	TCSP	2028	
	\$1,125.00	\$1,125.00	\$900.00	TCSP	2029	
DESIGN/ENGINEER	\$1,125.00	\$1,125.00	\$900.00	TCSP	2030	
	\$11,250.00	\$11,250.00	\$9,000.00	TCSP	2027	
	\$11,250.00	\$11,250.00	\$9,000.00	TCSP	2028	
CONSTRUCTION	\$11,250.00	\$11,250.00	\$9,000.00	TCSP	2029	
	\$11,250.00	\$11,250.00	\$9,000.00	TCSP	2030	
	\$5,625.00	\$6,187.50	\$4,950.00	TCSP	2027	
	\$22,500.00	\$24,750.00	\$19,800.00	TCSP	2028	
\$22,500.00	\$24,750.00	\$19,800.00	TCSP	2029		
\$22,500.00	\$24,750.00	\$19,800.00	TCSP	2030		
<b>Total Cost</b>	<b>\$127,125.00</b>	<b>\$134,437.50</b>	<b>\$107,550.00</b>			

Project: L.000083 CONVERSION OF AC (INCLUDES DEBT SERVICE)

Remarks	Type Improvement	Work Type
IN STIP BY LINE ITEM, ONLY FOR REFERENCE		

Project Phase	Project Cost	Total Cost (w/CE&+HDC)	Federal Share	Fund	Year	Sponsor
FEASIBILITY	\$2,250.00	\$2,250.00	\$1,800.00	STPFLEX	2027	
	\$2,250.00	\$2,250.00	\$1,800.00	STPFLEX	2028	
	\$2,250.00	\$2,250.00	\$1,800.00	STPFLEX	2029	
ENVIRONMENTAL	\$2,250.00	\$2,250.00	\$1,800.00	STPFLEX	2030	
	\$2,250.00	\$2,250.00	\$1,800.00	STPFLEX	2027	
	\$2,250.00	\$2,250.00	\$1,800.00	STPFLEX	2028	
	\$2,250.00	\$2,250.00	\$1,800.00	STPFLEX	2029	
RIGHT OF WAY	\$2,250.00	\$2,250.00	\$1,800.00	STPFLEX	2030	
	\$2,250.00	\$2,250.00	\$1,800.00	STPFLEX	2027	
	\$2,250.00	\$2,250.00	\$1,800.00	STPFLEX	2028	
	\$2,250.00	\$2,250.00	\$1,800.00	STPFLEX	2029	
	\$2,250.00	\$2,250.00	\$1,800.00	STPFLEX	2030	

UTILITY RELOCATION	\$2,250.00	\$2,250.00	\$1,800.00	STPFLEX	2027
	\$2,250.00	\$2,250.00	\$1,800.00	STPFLEX	2028
DESIGN/ENGINEER	\$2,250.00	\$2,250.00	\$1,800.00	STPFLEX	2029
	\$2,250.00	\$2,250.00	\$1,800.00	STPFLEX	2030
CONSTRUCTION	\$2,250.00	\$2,250.00	\$1,800.00	STPFLEX	2027
	\$2,250.00	\$2,250.00	\$1,800.00	STPFLEX	2028
	\$2,250.00	\$2,250.00	\$1,800.00	STPFLEX	2029
	\$2,250.00	\$2,250.00	\$1,800.00	STPFLEX	2030
	\$225,000.00	\$247,500.00	\$198,000.00	NHPP	2027
	\$225,000.00	\$247,500.00	\$198,000.00	STPFLEX	2027
	\$225,000.00	\$247,500.00	\$198,000.00	NHPP	2028
	\$225,000.00	\$247,500.00	\$198,000.00	STPFLEX	2028
	\$517,500.00	\$569,250.00	\$455,400.00	NHPP	2029
	\$517,500.00	\$569,250.00	\$455,400.00	STPFLEX	2029
\$922,500.00	\$1,014,750.00	\$811,800.00	NHPP	2030	
\$922,500.00	\$1,014,750.00	\$811,800.00	STPFLEX	2030	
<b>Total Cost</b>	<b>\$3,825,000.00</b>	<b>\$4,203,000.00</b>	<b>\$3,362,400.00</b>		

Project: L.000084 MODIFIED PROJECT AGREEMENT

Remarks		Type Improvement			Work Type	
IN STIP BY LINE ITEM, ONLY FOR REFERENCE						
Project Phase	Project Cost	Total Cost (w/CE&I+IDC)	Federal Share	Fund	Year	Sponsor
FEASIBILITY	\$5,625.00	\$5,625.00	\$4,500.00	STPFLEX	2027	
	\$5,625.00	\$5,625.00	\$4,500.00	STPFLEX	2028	
ENVIRONMENTAL	\$5,625.00	\$5,625.00	\$4,500.00	STPFLEX	2029	
	\$5,625.00	\$5,625.00	\$4,500.00	STPFLEX	2030	
RIGHT OF WAY	\$5,625.00	\$5,625.00	\$4,500.00	STPFLEX	2027	
	\$5,625.00	\$5,625.00	\$4,500.00	STPFLEX	2028	
UTILITY RELOCATION	\$11,250.00	\$11,250.00	\$9,000.00	STPFLEX	2027	
	\$11,250.00	\$11,250.00	\$9,000.00	STPFLEX	2028	
DESIGN/ENGINEER	\$11,250.00	\$11,250.00	\$9,000.00	STPFLEX	2029	
	\$11,250.00	\$11,250.00	\$9,000.00	STPFLEX	2030	
CONSTRUCTION	\$11,250.00	\$11,250.00	\$9,000.00	STPFLEX	2027	
	\$11,250.00	\$11,250.00	\$9,000.00	STPFLEX	2028	
CONSTRUCTION	\$225,000.00	\$247,500.00	\$198,000.00	STPFLEX	2029	
	\$225,000.00	\$247,500.00	\$198,000.00	STPFLEX	2028	
CONSTRUCTION	\$225,000.00	\$247,500.00	\$198,000.00	STPFLEX	2029	
	\$225,000.00	\$247,500.00	\$198,000.00	STPFLEX	2030	
<b>Total Cost</b>	<b>\$1,080,000.00</b>	<b>\$1,170,000.00</b>	<b>\$936,000.00</b>			

Project: L.000085 ADVANCED TRAFFIC MANAGEMENT CENTER

Remarks		Type Improvement			Work Type	
IN STIP BY LINE ITEM, ONLY FOR REFERENCE						
Project Phase	Project Cost	Total Cost (w/CE&I+IDC)	Federal Share	Fund	Year	Sponsor
CONSTRUCTION	\$4,500.00	\$4,950.00	\$3,960.00	CM	2027	
	\$4,500.00	\$4,950.00	\$3,960.00	CM	2028	
	\$4,500.00	\$4,950.00	\$3,960.00	CM	2029	
	\$4,500.00	\$4,950.00	\$3,960.00	CM	2030	
<b>Total Cost</b>	<b>\$18,000.00</b>	<b>\$19,800.00</b>	<b>\$15,840.00</b>			

Project: L.000087 STAGE 0 AND FEASIBILITY STUDIES

Remarks		Type Improvement			Work Type		
IN STIP BY LINE ITEM, ONLY FOR REFERENCE							
Project Phase	Project Cost	Total Cost (w/CE&I+IDC)	Federal Share	Fund	Year	Sponsor	
FEASIBILITY	\$14,625.00	\$14,625.00	\$11,700.00	DEMO	2027		
	\$5,625.00	\$5,625.00	\$4,500.00	HSIP	2027		
	\$6,750.00	\$6,750.00	\$5,400.00	HSIPPEN	2027		
	\$36,000.00	\$36,000.00	\$28,800.00	NHPP	2027		
	\$56,250.00	\$56,250.00	\$45,000.00	STCASH	2027		
	\$51,750.00	\$51,750.00	\$41,400.00	STPFLEX	2027		
	\$11,250.00	\$11,250.00	\$9,000.00	DEMO	2028		
	\$11,250.00	\$11,250.00	\$9,000.00	HSIP	2028		
	\$5,625.00	\$5,625.00	\$4,500.00	HSIPPEN	2028		
	\$33,750.00	\$33,750.00	\$27,000.00	NHPP	2028		
	\$11,250.00	\$11,250.00	\$9,000.00	STCASH	2028		
	\$39,375.00	\$39,375.00	\$31,500.00	STPFLEX	2028		
	\$9,000.00	\$9,000.00	\$7,200.00	FBROFF	2029		
	\$11,250.00	\$11,250.00	\$9,000.00	HSIP	2029		
	\$15,750.00	\$15,750.00	\$12,600.00	HSIPPEN	2029		
	\$20,250.00	\$20,250.00	\$16,200.00	NHPP	2029		
	\$5,625.00	\$5,625.00	\$4,500.00	STCASH	2029		
	\$36,000.00	\$36,000.00	\$28,800.00	STPFLEX	2029		
	\$11,250.00	\$11,250.00	\$9,000.00	HSIP	2030		
	\$22,500.00	\$22,500.00	\$18,000.00	HSIPPEN	2030		
	\$22,500.00	\$22,500.00	\$18,000.00	NHPP	2030		
	\$11,250.00	\$11,250.00	\$9,000.00	STCASH	2030		
	\$22,500.00	\$22,500.00	\$18,000.00	STPFLEX	2030		
	<b>Total Cost</b>	<b>\$471,375.00</b>	<b>\$471,375.00</b>	<b>\$377,100.00</b>			

Project: L.000092 DBE SUPPORTIVE SERVICES

Remarks		Type Improvement		Work Type	
IN STIP BY LINE ITEM, ONLY FOR REFERENCE				CONGESTION MITIGATION	

Project Phase	Project Cost	Total Cost (w/CE&+IDC)	Federal Share	Fund	Year	Sponsor
FEASIBILITY	\$6,750.00	\$6,750.00	\$5,400.00	DBE/SS	2027	
	\$6,750.00	\$6,750.00	\$5,400.00	DBE/SS	2028	
	\$6,750.00	\$6,750.00	\$5,400.00	DBE/SS	2029	
	\$6,750.00	\$6,750.00	\$5,400.00	DBE/SS	2030	
<b>Total Cost</b>	<b>\$27,000.00</b>	<b>\$27,000.00</b>	<b>\$21,600.00</b>			

Project: L.000093 STATEWIDE CONGESTION MITIGATION

Remarks		Type Improvement		Work Type	
IN STIP BY LINE ITEM, ONLY FOR REFERENCE				CONGESTION MITIGATION	

Project Phase	Project Cost	Total Cost (w/CE&+IDC)	Federal Share	Fund	Year	Sponsor
FEASIBILITY	\$2,250.00	\$2,250.00	\$1,800.00	STPFLEX	2027	
	\$2,250.00	\$2,250.00	\$1,800.00	STPFLEX	2028	
	\$2,250.00	\$2,250.00	\$1,800.00	STPFLEX	2029	
	\$2,250.00	\$2,250.00	\$1,800.00	STPFLEX	2030	
ENVIRONMENTAL	\$2,250.00	\$2,250.00	\$1,800.00	CM	2027	
	\$2,250.00	\$2,250.00	\$1,800.00	CM	2028	
	\$2,250.00	\$2,250.00	\$1,800.00	CM	2029	
	\$2,250.00	\$2,250.00	\$1,800.00	CM	2030	
RIGHT OF WAY	\$2,250.00	\$2,250.00	\$1,800.00	CM	2027	
	\$2,250.00	\$2,250.00	\$1,800.00	CM	2028	
	\$2,250.00	\$2,250.00	\$1,800.00	CM	2029	
	\$2,250.00	\$2,250.00	\$1,800.00	CM	2030	
UTILITY RELOCATION	\$2,250.00	\$2,250.00	\$1,800.00	CM	2027	
	\$2,250.00	\$2,250.00	\$1,800.00	CM	2028	
	\$2,250.00	\$2,250.00	\$1,800.00	CM	2029	
	\$2,250.00	\$2,250.00	\$1,800.00	CM	2030	
DESIGN/ENGINEER	\$2,250.00	\$2,250.00	\$1,800.00	CM	2027	
	\$2,250.00	\$2,250.00	\$1,800.00	CM	2028	
	\$2,250.00	\$2,250.00	\$1,800.00	CM	2029	
	\$2,250.00	\$2,250.00	\$1,800.00	CM	2030	
CONSTRUCTION	\$5,625.00	\$6,187.50	\$4,950.00	CM	2027	
	\$103,500.00	\$113,850.00	\$91,080.00	CM	2028	
	\$103,500.00	\$113,850.00	\$91,080.00	CM	2029	
	\$103,500.00	\$113,850.00	\$91,080.00	CM	2030	
	<b>Total Cost</b>	<b>\$361,125.00</b>	<b>\$392,737.50</b>	<b>\$314,190.00</b>		

Project: L.000094 URBAN TRANSIT(INCL TRANSFER TO AGENCIES)

Remarks		Type Improvement		Work Type	
IN STIP BY LINE ITEM, ONLY FOR REFERENCE					

Project Phase	Project Cost	Total Cost (w/CE&+IDC)	Federal Share	Fund	Year	Sponsor
DESIGN/ENGINEER	\$1,125.00	\$1,125.00	\$900.00	STPFLEX	2027	
	\$1,125.00	\$1,125.00	\$900.00	STPFLEX	2028	
	\$1,125.00	\$1,125.00	\$900.00	STPFLEX	2029	
	\$1,125.00	\$1,125.00	\$900.00	STPFLEX	2030	
CONSTRUCTION	\$45,000.00	\$49,500.00	\$39,600.00	CM	2027	
	\$11,250.00	\$12,375.00	\$9,900.00	FB DISCR	2027	
	\$22,500.00	\$24,750.00	\$19,800.00	STP50-200K	2027	
	\$360,000.00	\$396,000.00	\$316,800.00	STPFLEX	2027	
	\$45,000.00	\$49,500.00	\$39,600.00	CM	2028	
	\$11,250.00	\$12,375.00	\$9,900.00	FB DISCR	2028	
	\$22,500.00	\$24,750.00	\$19,800.00	STP50-200K	2028	
	\$22,500.00	\$24,750.00	\$19,800.00	STPFLEX	2028	
	\$45,000.00	\$49,500.00	\$39,600.00	CM	2029	
	\$11,250.00	\$12,375.00	\$9,900.00	FB DISCR	2029	
	\$22,500.00	\$24,750.00	\$19,800.00	STP50-200K	2029	
	\$22,500.00	\$24,750.00	\$19,800.00	STPFLEX	2029	
	\$45,000.00	\$49,500.00	\$39,600.00	CM	2030	
	\$11,250.00	\$12,375.00	\$9,900.00	FB DISCR	2030	
	\$22,500.00	\$24,750.00	\$19,800.00	STP50-200K	2030	
\$22,500.00	\$24,750.00	\$19,800.00	STPFLEX	2030		
<b>Total Cost</b>	<b>\$747,000.00</b>	<b>\$821,250.00</b>	<b>\$657,000.00</b>			

Project: L.000095 SPECIAL RULE-AREAS 5K OR LESS POPULATION

Remarks		Type Improvement		Work Type	
IN STIP BY LINE ITEM, ONLY FOR REFERENCE					

Project Phase	Project Cost	Total Cost (w/CE&+IDC)	Federal Share	Fund	Year	Sponsor
ENVIRONMENTAL	\$2,250.00	\$2,250.00	\$1,800.00	STP<5K	2027	
	\$2,250.00	\$2,250.00	\$1,800.00	STP<5K	2028	
	\$2,250.00	\$2,250.00	\$1,800.00	STP<5K	2029	
	\$2,250.00	\$2,250.00	\$1,800.00	STP<5K	2030	
RIGHT OF WAY	\$2,250.00	\$2,250.00	\$1,800.00	STP<5K	2027	
	\$2,250.00	\$2,250.00	\$1,800.00	STP<5K	2028	
	\$2,250.00	\$2,250.00	\$1,800.00	STP<5K	2029	
	\$2,250.00	\$2,250.00	\$1,800.00	STP<5K	2030	
UTILITY RELOCATION	\$2,250.00	\$2,250.00	\$1,800.00	STP<5K	2027	
	\$2,250.00	\$2,250.00	\$1,800.00	STP<5K	2028	
	\$2,250.00	\$2,250.00	\$1,800.00	STP<5K	2029	
	\$2,250.00	\$2,250.00	\$1,800.00	STP<5K	2030	
DESIGN/ENGINEER	\$2,250.00	\$2,250.00	\$1,800.00	STP<5K	2027	
	\$2,250.00	\$2,250.00	\$1,800.00	STP<5K	2028	
	\$2,250.00	\$2,250.00	\$1,800.00	STP<5K	2029	
	\$2,250.00	\$2,250.00	\$1,800.00	STP<5K	2030	
CONSTRUCTION	\$2,250.00	\$2,250.00	\$1,800.00	STP<5K	2027	
	\$3,937.50	\$4,331.25	\$3,465.00	STP<5K	2027	

	\$93,937.50	\$103,331.25	\$82,665.00	STP-5K	2028
	\$22,500.00	\$24,750.00	\$19,800.00	STP LEX	2028
	\$93,937.50	\$103,331.25	\$82,665.00	STP-5K	2029
	\$93,937.50	\$103,331.25	\$82,665.00	STP-5K	2030
<b>Total Cost</b>	<b>\$344,250.00</b>	<b>\$375,075.00</b>	<b>\$300,060.00</b>		

Project: L.000096 FERRY BOAT MECH/ELECT/DISCR PROGRAMS

Remarks	Type Improvement	Work Type
IN STIP BY LINE ITEM, ONLY FOR REFERENCE		

Project Phase	Project Cost	Total Cost (w/CE&I+IDC)	Federal Share	Fund	Year	Sponsor	
DESIGN/ENGINEER	\$2,700.00	\$2,700.00	\$2,160.00	FB DISCR	2027		
	\$33.75	\$33.75	\$27.00	STCASH	2027		
	\$33.75	\$33.75	\$27.00	STPFLEX	2027		
	\$33.75	\$33.75	\$27.00	FB DISCR	2028		
	\$33.75	\$33.75	\$27.00	STCASH	2028		
	\$33.75	\$33.75	\$27.00	STPFLEX	2028		
	\$33.75	\$33.75	\$27.00	FB DISCR	2029		
	\$33.75	\$33.75	\$27.00	STCASH	2029		
	\$33.75	\$33.75	\$27.00	STPFLEX	2029		
	\$33.75	\$33.75	\$27.00	FB DISCR	2030		
	\$33.75	\$33.75	\$27.00	STCASH	2030		
	\$33.75	\$33.75	\$27.00	STPFLEX	2030		
	CONSTRUCTION	\$20,250.00	\$22,275.00	\$17,820.00	FB DISCR	2027	
		\$3,375.00	\$3,712.50	\$2,970.00	STCASH	2027	
\$3,375.00		\$3,712.50	\$2,970.00	STPFLEX	2027		
\$7,425.00		\$8,167.50	\$6,534.00	FB DISCR	2028		
\$3,375.00		\$3,712.50	\$2,970.00	STCASH	2028		
\$3,375.00		\$3,712.50	\$2,970.00	STPFLEX	2028		
\$4,050.00		\$4,455.00	\$3,564.00	FB DISCR	2029		
\$3,375.00		\$3,712.50	\$2,970.00	STCASH	2029		
\$6,750.00		\$7,425.00	\$5,940.00	STPFLEX	2029		
\$4,050.00		\$4,455.00	\$3,564.00	FB DISCR	2030		
\$3,375.00		\$3,712.50	\$2,970.00	STCASH	2030		
\$10,125.00		\$11,137.50	\$8,910.00	STP-5K-E	2030		
\$6,750.00		\$7,425.00	\$5,940.00	STPFLEX	2030		
<b>Total Cost</b>		<b>\$82,721.25</b>	<b>\$90,686.25</b>	<b>\$72,549.00</b>			

PRIOR TIP				TIP FY 2027 - 2030 FINANCIALLY CONSTRAINED SECTION (STP50-200K)												TIP OUTYEAR							
FY 2025 - 2026				FY 2026 - 2027				FY 2027 - 2028				FY 2028 - 2029				FY 2029 - 2030				FY 2030 - 2031			
STP	Local	LADOTD	Cost + 10%	STP	Local	LADOTD	Cost + 15%	STP	Local	LADOTD	Cost + 15%	STP	Local	LADOTD	Cost + 15%	STP	Local	LADOTD	Cost + 15%	STP	Local	LADOTD	Cost + 15%
<b>H.016252</b> City of Alexandria Masonic Drive: Texas Ave. - Lee St. (Safety, Enhancement)				<b>H.015633</b> City of Alexandria ASPHALTIC REHAB PHASE III (Overlay)				<b>H.015312</b> City of Pineville JONES STREET PAVEMENT REHABILITATION (Maintenance)				<b>H.016197</b> LA 1208-3 JACKSTON STREET REHABILITATION (Overlay, Safety)				<b>H.015476</b> City of Alexandria FOISY STREET RECONSTRUCTION (Reconstruction, Enhancement)				<b>H.008271</b> City of Alexandria SUGARHOUSE ROAD EXTENSION (Capacity)			
\$528,000	\$132,000		\$660,000	\$2,576,000	\$644,000		\$3,220,000	\$768,200	\$192,050		\$960,250	\$2,760,000		\$690,000	\$3,450,000	\$2,760,000	\$690,000		\$3,450,000	\$2,300,000	\$2,875,000	\$30,613,000	\$36,363,000
<b>H.016203</b> RPPJ England Airpark Roadway Improvements (Overlay, Safety)																							
\$1,720,000	\$378,400		\$1,892,000																				
<b>H.016757</b> RAPC Aerial Photography 2026 (P)																							
\$60,000	\$15,000		\$75,000																				
<b>L.000062</b> MOTORIST ASSISTANCE PATROL (MAP): Roadway Safety/Operations (Safety)				<b>L.000062</b> MOTORIST ASSISTANCE PATROL (MAP): Roadway Safety/Operations (Safety)				<b>L.000062</b> MOTORIST ASSISTANCE PATROL (MAP): Roadway Safety/Operations (Safety)				<b>L.000062</b> MOTORIST ASSISTANCE PATROL (MAP): Roadway Safety/Operations (Safety)				<b>L.000062</b> MOTORIST ASSISTANCE PATROL (MAP): Roadway Safety/Operations (Safety)				<b>L.000062</b> MOTORIST ASSISTANCE PATROL (MAP): Roadway Safety/Operations (Safety)			
\$302,962		\$302,962	\$605,924	\$302,962		\$302,962	\$605,924	\$302,962		\$302,962	\$605,924	\$302,962		\$302,962	\$605,924	\$302,962		\$302,962	\$605,924	\$302,962		\$302,962	\$605,924
Total STP =		\$2,308,000		Total STP =		\$2,878,962		Total STP =		\$1,071,162		Total STP =		\$3,062,962		Total STP =		\$3,062,962		Total STP =		\$2,602,962	
STP + Match		\$2,833,400		STP + Match		\$3,825,924		STP + Match		\$1,566,174		STP + Match		\$3,365,924		STP + Match		\$4,055,924		STP + Match		\$36,393,924	
				<b>Total STP Amount =</b>								<b>\$10,076,048</b>											
				<b>Average STP Amount per FFY =</b>								<b>\$2,519,012</b>											
												<b>H.xxxxxx : Projects are listed for information only and not included in STIP until Stage 0 is complete and/or project numbers are assigned.</b>											
																<b>Date Modified: February 25, 2026</b>							



## **Alexandria Transit System (Atrans)**

ATRANS is a 15 fleet system with an average fleet age of 3.6 years. Eight buses provide regular daily service along eight local fixed routes within the urbanized area. Seven of the routes provide service to the City of Alexandria, England airpark while the remaining route provides service to the City of Pineville. All routes interlock at a common transfer terminal, located at the corner of Main and Murray Streets in Alexandria. All of the routes operate on a sixty-minute headway. ATRANS hours of operation are Monday — Saturday, 6:15 AM — 10:00 PM with an average annual ridership of 400,078. The City of Alexandria has developed and submitted to the Federal Transit Administration an Americans with disabilities Act compliance plan. Wheelchair lifts for the transportation of the mobile impaired and paratransit service are available. Two vans provide demand-response daily service. The hours of operation are the same as the fixed route and the demand system has an average 3,794 annual ridership since 2020.

The four-year transit portion of the FFY 2027-2030 TIP will help support the continued development of new transit routes, the modification of existing transit routes, marketing strategies to increase ridership and the overall efficiency of the system. However, the cost benefit ratio of expanding fixed routes within the metropolitan area is prohibitive. The plan also makes provisions for preventive maintenance, vehicle replacement, and equipment purchases.

PLACEHOLDER MPO Certification of Project Inclusion in TIP AE

**PROPOSED FOURTH DRAFT**

**TRANSIT ELEMENT**

**TRANSPORTATION IMPROVEMENT PROGRAM**

Alexandria/Pineville Metropolitan Area

Description	Match Type	Program	Project Type	Total Amount	Federal Share	Local Share	Local Sponsor
<b>Apportionment Year: FFY 2027</b>							
<b>TIP Year Obligated: FFY 2027</b>							
Operating Assistance	50/50	5307	Operating	\$1,500,000	\$750,000	\$750,000	ATRANS
Automatic Passenger Counters	80/20	5339	Capital	\$250,000	\$200,000	\$50,000	ATRANS
Preventive Maintenance	80/20	5307	Capital	\$100,000	\$80,000	\$20,000	ATRANS
1% Security Capital Bus	80/20	5307	Capital	\$60,000	\$48,000	\$12,000	ATRANS
<b>Sub-Total</b>				\$1,910,000	\$1,078,000	\$832,000	
<b>Apportionment Year: FFY2028</b>							
<b>TIP Year Obligated: FFY 2028</b>							
Operating Assistance	50/50	5307	Operating	\$1,500,000	\$750,000	\$750,000	ATRANS
Preventive Maintenance	80/20	5307	Capital	\$100,000	\$80,000	\$20,000	ATRANS
1% Security Capital Bus	80/20	5307	Capital	\$60,000	\$48,000	\$12,000	ATRANS
Bus Rolling Stock Rehab	85/15	5339	Capital	\$350,000	\$297,500	\$52,500	ATRANS
<b>Sub-Total</b>				\$2,010,000	\$1,175,500	\$834,500	
<b>Apportionment Year: FFY 2029</b>							
<b>TIP Year Obligated: FFY 2029</b>							
Operating Assistance	50/50	5307	Operating	\$1,500,000	\$750,000	\$750,000	ATRANS
Preventive Maintenance	80/20	5307	Capital	\$100,000	\$80,000	\$20,000	ATRANS
Bus Rolling Stock Rehab	85/15	5339	Capital	\$350,000	\$297,500	\$52,500	ATRANS
1% Security Capital Bus	80/20	5307	Capital	\$60,000	\$48,000	\$12,000	ATRANS
<b>Sub-Total</b>				\$2,010,000	\$1,175,500	\$834,500	
<b>Apportionment Year: FFY 2030</b>							
<b>TIP Year Obligated: FFY 2030</b>							
Operating Assistance	50/50	5307	Operating	\$1,500,000	\$750,000	\$750,000	ATRANS
Bus Rolling Stock Rehab	85/15	5339	Capital	\$350,000	\$297,500	\$52,500	ATRANS
1% Security Capital Bus	80/20	5307	Capital	\$60,000	\$48,000	\$12,000	ATRANS
Preventive Maintenance	80/20	5307	Capital	\$100,000	\$80,000	\$20,000	ATRANS
<b>Sub-Total</b>				\$2,010,000	\$1,175,500	\$834,500	
<b>FFY 2027 - 2030 [Grand Total]</b>				<b>\$7,940,000</b>	<b>\$4,604,500</b>	<b>\$3,335,500</b>	
<b>UPDATED 04-16-2026</b>							
<b>PROPOSED SECOND DRAFT TRANSIT TIP TOTAL (FFY 2027 - 2030) BREAKDOWN</b>							
<b>4-YR TIP TRANSIT INVESTMENT</b>	<b>Operations</b>	<b>Rolling Stock</b>	<b>Facilities</b>	<b>Maintenance*</b>	<b>Equipment</b>	<b>Security</b>	<b>TOTAL \$</b>
TOTAL [FED + LOCAL] \$	\$3,000,000	\$892,500	\$0	\$400,000	\$250,000	\$240,000	\$4,782,500
FED FTA SHARE \$	\$3,000,000	\$157,500	\$0	\$320,000	\$200,000	\$192,000	\$3,869,500
FED SHARE % TOTAL	100%	18%	0%	80%	80%	80%	81%
% TOTAL BY CATAGORY	62.73%	18.66%	0.00%	8.36%	5.23%	5.02%	100.00%

\* Preventative Maintenance federal and local split 80/20 in FFY 2027 + FFY2030. Totals include FTA 5307 + 5340.

### FTA 5310 & 5311 Operating Project Listings (2023-2026)

CFDA #	Recipient	FY 2023		FY 2024		FY 2025		FY 2026
		5311 Awarded at 50%	CARES Awarded at 100%	5311 Awarded at 50%	CARES Awarded at 100%	5311 Awarded at 50%	CARES Awarded at 100%	5311 Awarded at 50%
5311 - CFDA 20.509	AVOYELLES PARISH POLICE JURY	\$78,458	\$316,915	\$200,000	\$ -	\$200,000	\$ -	\$245,000
5311 - CFDA 20.509	RAPIDES AREA PLANNING COMMISSION	\$ -	\$480,000	\$510,000	\$592,874	\$80,500	\$107,497	\$135,000
5311 - CFDA 20.509	RAPIDES PARISH POLICE JURY	\$32,802	\$65,604	\$100,000	\$ -	\$50,000	\$ -	\$79,924
5311 - CFDA 20.509	VERNON PARISH POLICE JURY	\$140,322	\$190,644	\$200,000	\$ -	\$207,623	\$ -	\$252,881
<b>Summary</b>								
CFDA #	RECIPIENT	2023 JARC AWARDED	2023 ARP AWARDED	2024 JARC AWARDED	2024 ARP AWARDED	2025 JARC AWARDED	2025 ARP AWARDED	2025 JARC AWARDED
5310 - CFDA 20.513	ARC OF RAPIDES	\$ -	\$35,993	\$ -	\$ -	\$ -	\$ -	\$ -

### FTA 5310 & 5311 Capital Project Listings (2023-2026)

Year	Recipient	Vehicle Type	Total Cost
2023	Rapides Area Planning Commission	12-6B	\$148,847.00
2023	Rapides Area Planning Commission	12-6B	\$148,847.00
2023	ARC of Rapides	12-2B	\$140,426.00
<b>Summary</b>			
Year	Recipient	Vehicle Type	Total Cost
2024	Avoyelles Parish Police Jury	12-2B	\$140,426.00
2024	Vernon Parish Police Jury	5-2MV	\$80,123.58
2024	Vernon Parish Police Jury	5-2MV	\$80,123.58
2024	Vernon Parish Police Jury	5-2MV	\$80,123.58
2024	ARC of Rapides	12-2B	\$140,426.00
2024	ARC of Rapides	12-2B	\$140,426.00
2024	Avoyelles SDD	12-2B	\$140,426.00

<b>Year</b>	<b>Recipient</b>	<b>Vehicle Type</b>	<b>Total Cost</b>
2025	Avoyelles Parish Police Jury	5-2MV	\$83,346.00
2025	Rapides Area Planning Commission	5-2MV	\$83,346.00
2025	Rapides Area Planning Commission	5-2MV	\$83,346.00
2025	Vernon Parish Police Jury	12-2B	\$155,665.00
2025	ARC of Rapides	12-2B	\$155,665.00
2025	ARC of Rapides	12-2B	\$155,665.00
2025	Avoyelles SDD	12-2B	\$155,665.00
2025	Avoyelles SDD	12-2B	\$155,665.00
2025	Avoyelles SDD	12-2B	\$155,665.00
<b>Year</b>	<b>Recipient</b>	<b>Vehicle Type</b>	<b>Total Cost</b>
2026	Vernon Parish Police Jury	5-2MV	\$89,572.25
2026	The ARC of Rapides	12-2B	\$155,837.75

PLACEHOLDER TIP Project Maps - STP & Non-STP from JAE

**SECTION III**

## Financial Plan

Implementation of the FFY2027–2030 Transportation Improvement Program (TIP) involves multiple funding sources at the federal, state, and local levels. At the federal level, funding is primarily provided through programs authorized under the current Infrastructure Investment and Jobs Act (IIJA or BIL) and administered by the Federal Highway Administration (FHWA) and Federal Transit Administration (FTA). The TIP has been developed in accordance with the fiscal constraint requirements of 23 CFR 450.324 and reflects only those projects for which funding is reasonably anticipated to be available during the program period.

Implementation of the FFY2027–2030 Transportation Improvement Program (TIP) involves multiple funding sources at the federal, state, and local levels. At the federal level, funding is primarily provided through programs authorized under the current Infrastructure Investment and Jobs Act (IIJA or BIL) and administered by the Federal Highway Administration (FHWA) and Federal Transit Administration (FTA). The TIP has been developed in accordance with the fiscal constraint requirements of 23 CFR 450.324 and reflects only those projects for which funding is reasonably anticipated to be available during the program period.

### Federal Funding Programs

- **National Highway Performance Program (NHPP)**

NHPP funds improvements to the National Highway System (NHS), including Interstate routes and urban principal arterials, and may also be used for bridge replacement or rehabilitation on public roads. The standard funding match is Federal 80 percent / Local 20 percent, with Interstate projects eligible for up to a 90 percent federal share.

- **Surface Transportation Program (STP / STBG)**

The Surface Transportation Program is a flexible block grant program with sub-allocations for states and urbanized areas. With limited exceptions, STP funds may be used on all functional classifications of roadways, including the NHS. The standard funding match is Federal 80 percent / Local 20 percent. Funding for urbanized areas with populations under 200,000 is distributed through the STP50–200K program.

- **Highway Safety Improvement Program (HSIP)**

HSIP funds projects that demonstrate documented improvements in roadway safety performance. Eligible projects must be supported by safety data and analysis and may be funded at up to 100 percent federal share, subject to eligibility.

- **Transportation Alternatives (TA)**

The Transportation Alternatives program funds pedestrian and bicycle facilities, recreational trails, Safe Routes to School infrastructure, and other community-oriented transportation improvements. Depending on project eligibility, the federal share may be up to 100 percent.

Any project costs not covered by federal or state programs are the responsibility of local governments. Local matching funds may include revenues from property taxes, sales taxes, user fees, special assessments, impact fees, or bond proceeds, subject to local policy and availability.

### Historic Funding By Improvement Type

An analysis of historical funding using the LADOTD listing of projects let between 2015 and 2025 inside the MPA. Non-recurring funds were excluded from each year’s total historical revenue. Projects were then grouped by year with an average Consumer Price Index (CPI) factor used to convert the revenue into 2025 dollars. The database was then aggregated by general project type as shown in the table below:

Categories	10-Year Total Actual Dollars	Annual Average (2025\$)	Percent
Bridge	\$ 61,910,367	\$5,428,442	34.16%
Overlay	\$ 59,751,521	\$4,305,939	27.10%
Maintenance	\$ 38,351,808	\$1,689,526	10.63%
Capacity	\$ 16,184,300	\$1,609,240	10.13%
Reconstruction	\$ 8,421,142	\$1,450,981	9.13%
Safety	\$ 15,688,824	\$966,254	6.08%
Enhancement	\$ 3,498,835	\$382,945	2.41%
ITS	\$ 4,097,749	\$57,747	0.36%
<b>TOTAL</b>	<b>\$ 207,904,546</b>	<b>\$15,891,075</b>	<b>100.00%</b>

### Forecast Funding Availability

Financially Constrained Plan’s feasibility was assessed by comparing the estimated cost of the programmed improvements let between 2015 and 2025 to the projected funds available by funding source and improvement type. Recurring funding projection was made analyzing historic data expenditures for street and highway construction inside the MPA.

Categories	Annual Average (2025 \$)	Percent
Bridge	\$5,500,000	34%
Overlay	\$4,000,000	25%
Maintenance	\$2,000,000	13%
Capacity	\$1,500,000	9%
Reconstruction	\$1,500,000	9%
Safety	\$1,000,000	6%
Enhancement	\$350,000	2%
ITS	\$150,000	1%
<b>TOTAL</b>	<b>\$16,000,000</b>	<b>100%</b>

Since 2015, approximately \$207.9 million has been invested in transportation projects within the Alexandria–Pineville Metropolitan Planning Area. Statewide, Surface Transportation Program (STP) funding for urbanized areas with populations under 200,000 averages approximately \$17.5 million per year, of which the Alexandria–Pineville Metropolitan Area’s estimated STP50–200K share is approximately \$3.5 million per year, inclusive of required local match.

All STP-funded projects included in the TIP are based on funding allocated to the metropolitan area. Projects funded through other federal programs—such as the National Highway Performance Program (NHPP), Highway Safety Improvement Program (HSIP), and Transportation Alternatives Program (TAP)—were developed jointly by the MPO in coordination with the Louisiana Department of Transportation and Development (LADOTD) and are consistent with the financially constrained Statewide Transportation Improvement Program (STIP).

The FFY2027–2030 Transportation Improvement Program was developed within the financial limits of all reasonably anticipated funding sources identified by the MPO and LADOTD and is financially constrained by year. Projects are programmed only when sufficient funding is expected to be available in the year shown. Inclusion of a project in the TIP does not constitute a commitment to fund or construct the project in a specific year if funding availability, project scope, or readiness changes.

The TIP includes both planning/programmatic activities and capital implementation projects. Planning activities are intended to support future project development, safety initiatives, and data-driven decision-making and do not obligate the MPO or project sponsors to advance specific capital projects absent future funding availability and policy approval.



## Transportation Performance Measures

With the passage of the Federal surface transportation legislation, “Moving Ahead for Progress in the 21st Century” (MAP-21), performance-based planning (PBP) has taken forefront with even greater significance. FAST Act (2015) further emphasized ensuring performance-based planning continues with mandates to both statewide and metropolitan planning processes to incorporate a more comprehensive performance-based approach to their decision-making. The legislation requires the USDOT, in consultation with States, MPOs and other stakeholders, to establish performance measures in the following areas:

- a) Safety
- b) Infrastructure Condition
- c) Congestion Reduction
- d) System Reliability
- e) Freight Movement and Economic Vitality
- f) Environmental Sustainability
- g) Reduced Project Delivery Delays

The TIP is a critical component of the Performance-Based Planning process because it commits transportation funding to specific improvement projects and operational strategies. Through this process, MPOs link planning to programming by prioritizing projects and allocating requisite funding for projects within the TIP ensuring consistency with the goals established in the Metropolitan Transportation Plan (MTP).

## Safety Performance Measures/Target Setting

The FAST Act and subsequent federal rule-making established five performance measures related to safety. The measures are:

1. Number of Fatalities;
2. Number of Serious Injuries;
3. Rate of Fatalities per 100 million vehicle miles traveled;
4. Rate of Serious Injuries per 100 million vehicle miles traveled;
5. Number of Non-motorized Fatalities and Serious Injuries.

Federal regulations require the Louisiana Department of Transportation and Development (LADOTD) to establish and report annual performance targets by February 28 of each year. MPOs are required to either adopt and support the LADOTD’s statewide targets or set their own targets specific to their areas. Annual targets will be expressed as five-year rolling averages and be compared with a five-year rolling average base period comprising of the five calendar years ending prior to the year the targets are due.

LADOTD, in coordination with the Louisiana Highway Safety Commission, has established statewide targets for each of the five performance measures as follows:

- 1% annual reduction in fatalities from a 2024 baseline of 854 to a target of 837 in 2026.
- 1% annual reduction in serious injuries from a 2024 baseline of 2,568 to a target of 2,517 in 2026.
- 1% annual reduction in fatality rate from a 2024 baseline of 1.582 to a target of 1.550 in 2026.

- 1% annual reduction in serious injury rate from a 2024 baseline of 4.707 to a target of 4.613 in 2026.
- 1% annual reduction in non-motorized fatalities and serious injuries from a 2024 baseline of 562 to a target of 550 in 2026.

RAPC is supporting LADOTD’s safety targets and amended the current Alexandria-Pineville MPO Metropolitan Transportation Plan (MTP 2045) to adopt and support LADOTD’s statewide measures and targets related to transportation safety as mentioned above. The MPO’s Technical Advisory Committee formally met and recommended approval for proposed targets November 5, 2025. A 14-day public comment period was conducted November 3 thru December 1 2025. No comments were received. The Alexandria-Pineville MPO Transportation Policy Committee formally approved supporting LADOTD’s statewide targets February 4, 2026.

The corresponding data for both LADOTD and the A/P-MPO’s targets is as follows:

Measure		Annual Targeted Change	Base (2018-2022) Rolling Average	Target (2024)	Base (2019-2023) Rolling Average	Target (2025)	Base (2020-2024) Rolling Average	Target (2026)
<b>State</b>	Fatalities	<b>1% reduction</b>	841	824	849	832	854	837
	Serious Injuries		1673	1639	2145	2102	2,568	2,517
	Fatality Rate		1.608	1.576	1.591	1.56	1.582	1.55
	Serious Injury Rate		3.173	3.110	3.973	3.893	4.707	4.613
	Non-Motorized Fatalities and Serious Injuries		447	438	502	492	562	550
<b>Local</b>	Fatalities	<b>1% reduction</b>	16	16	16	16	17	16
	Serious Injuries		24	24	38	37	45	44
	Fatality Rate		1.535	1.504	1.464	1.435	15	14
	Serious Injury Rate		2.265	2.220	3.357	3.29	1.451	1.422
	Non-Motorized Fatalities and Serious Injuries		11	10	13	12	3.951	3.873

## Transit Performance

Transit providers that received FTA funding are also required to incorporate performance management into their planning and programming process. This requires the creation of a Transit Asset Management (TAM) Plan and State of Good Repair (SGR) performance targets. Atrans is the only fixed route urban transit service provider availing FTA 5307 grant within the A/P MPO metropolitan area. The MPO is supports Atrans transit performance targets. All other on-demand transit service providers (FTA 5310 and/or FTA 5311 grant) are covered by LaDOTD’s group TAM plan.

Asset Class	Performance Measures	Target
<b>Rolling Stock</b> All revenue vehicles	<b>Age</b> - % of revenue vehicles within a particular asset class that have met or exceeded their Useful Life Benchmark (ULB)	10% of buses and vans must not exceed ULB
<b>Equipment</b> Non-revenue vehicles	<b>Age</b> - % of vehicles that have met or exceeded their Useful Life Benchmark (ULB)	0.9
<b>Facilities</b> All buildings or structures	<b>Condition</b> - % of facilities with a condition rating below 3.0 on the FTA Transit Economic Requirements Model (TERM) Scale	All facilities must remain above 3.0 rating on the TERM scale

Asset Category	# Units	% Exceeding ULB (FY23)	2023 Target	2024 Target	Condition Rating (1-5)	Notes
Buses (BU)	11	0%	0%	0%	N/A	Average age: 5.3 years
Cutaway Bus (CU)	3	0%	0%	0%	N/A	Average age: 2.0 years
MiniVans (MV) - Demand Response	1	100%	100%	100%	N/A	Vehicle (#1776) scheduled to be replaced FY25
Admin/Operations Facility	1	0%	50%	50%	3.5	TERM scale

SOURCE: Alexandria City Transit (ATRANS) 060025; NTD FY2023, Revision 4

## Transit Safety Performance Measures

The PTASP Final Rule, 49 CFR Part 673.11(a)(3), requires that all public transportation providers must develop an Agency Safety Plan (ASP) to include Safety Performance Targets (SPT) based on the safety performance measures established under the NSP. The safety performance measures included in the NSP are fatalities, injuries, safety events, and system reliability (State of Good Repair as developed and tracked in the TAM Plan). Atrans used past five (5) years of reported data to develop rolling averages listed in Table 5.7. Targets are set at the current NTD reported five-year average.

<b>Safety Performance Measure</b>	<b>SPT</b>		<b>SPT</b>	
Fatalities	Total Number Reported		Rate Per Total VRM	
Injuries	Total Number Reported		Rate Per Total VRM	
Safety Events	Total Number Reported		Rate Per Total VRM	
System Reliability	Mean distance between major mechanical failure			
<b>System Performance Measure</b>	<b>Fixed Route</b>		<b>Demand Response</b>	
	<b>Baseline (2019)</b>	<b>Target</b>	<b>Baseline (2019)</b>	<b>Target</b>
<b>Fatilities</b>	0.2	0.2	0	0
<b>Rate of Fatalities*</b>	0.000000396	0.000000396	0	0
<b>Injuries</b>	0.2	0.2	0	0
<b>Rate of Injuries*</b>	0.000000396	0.000000396	0	0
<b>Safety Events</b>	4.4	4.4	0	0
<b>Rate of Safety Events</b>	0.000008721	0.000008721	0	0
<b>Mean Distance Between Major Mechanical Failure</b>	504,552.40	504,552.40	76,916.40	76,916.40
* rate = total number for the year/total revenue vehicle miles traveled				

## System Performance Measures & Targets

The current TIP is consistent with the established goals of the MTP. The TIP project selection process has filtered projects focused on pavement and bridge preservation and is in sync with achieving PM2 and PM3 performance targets.

The PM2 Performance Measures are Pavement (Rutting, cracking, faulting, IRI) and Bridge Condition (total deck area) related while PM3 System Performance Measures involves Reliability on Interstate, Non-Interstate and Truck Travel Times.

RAPC is supporting all of LADOTD’s system performance (PM2 and PM3) targets sans Good condition rating on Non-Interstate NHS measure and seeks amendment to the current Alexandria/ Pineville MPO Metropolitan Transportation Plan (2045) and TIP FY 2023- 2026, to adopt and support LADOTD’s measures and targets.

System Performance Measure	LADOTD Targets			MPO Targets	
	Baseline (2022)	2-Year Target (2024)	4-Year Target (2026)	Baseline (2022)	4-Year Target (2026)
<i>% Interstate Pavement Good Condition</i>	22%	16.9%	13.5%	0%	13.5%
<i>% Interstate Pavement Poor Condition</i>	1.7%	2.1%	2.4%	1%	2.4%
<i>% Non-Interstate NHS Pavement Good Condition</i>	15.9%	9.8%	5.7%	6%	5.7%
<i>% Non-Interstate NHS Pavement Poor Condition</i>	11.9%	14.3%	15.9%	11%	15.9%
<i>% NHS Bridges Good Condition</i>	38.3%	34.2%	34.7%	50.6%	34.7%
<i>% NHS Bridges Classified Poor Condition</i>	6.8%	4.6%	4.7%	0.5%	2%
<i>% of the Person-Miles Traveled on the Interstate that are Reliable</i>	88.9	88.4	87.9	99.7	98.5
<i>% of the Person-Miles Traveled on the Non-Interstate that are Reliable</i>	89.4	88.1	86.9	95.3	92.7
<i>Truck Travel Time Reliability (TTTR) Index</i>	1.37	1.40	1.43	1.13	1.19

## Performance Based Planning & TIP Projects

The Alexandria-Pineville MPO has adopted federally required transportation performance targets related to safety (PM1), pavement and bridge condition (PM2), and system reliability and freight movement (PM3).

The 2045 Metropolitan Transportation Plan (MTP) set the tone to utilize performance-based planning approach in sync with the federal requirements of MAP-21 and continued in FAST Act. Performance based planning and programming (PBPP) is the strategic application of performance management that is based on the development, application, and monitoring of performance data in both the TIP as well as MTP. Based on public vision and input, the MTP identified Safety and System Preservation as top priorities in identifying projects. The Alexandria MPA currently does not have any locally owned NHS segments.

TIP projects are selected and programmed with consideration of their anticipated contribution toward achieving these targets. Preservation, safety, and operational projects are expected to support progress toward maintaining or improving system performance; however, individual projects are not solely responsible for achieving adopted targets, which are influenced by regional, state, and national factors.

The total number of projects within the four-year TIP includes: 10 roadway safety related, including 6 PM2 system performance related, in addition to 20 transit related projects, accounting for an overall total of 36 projects. The number of roadway related projects (10) pertaining to safety performance measures is 17.9% totaling \$4.92 million which is in line with 'safety' goal as outlined in the MTP 2045 prioritization. The MPO's Transportation Policy Committee emphasizes the need to invest in STBGP dollars in system preservation by allocation projects to regionally significant roadways and bridges which is reflected as a goal in the MTP. Therefore, the TIP includes 6 projects (48.6%) which focus on pavement and bridge related work totaling \$13.93 million.

The table on the following page showcases how projects included in the TIP help the MPO achieve selected performance targets and regional transportation system goals. TIP projects were categorized as roadway safety, transit, and condition (pavement & bridge). Total funding programmed for each category were then added and used to calculate the percentage of investment programmed to attain selected performance targets and goals established by the MPO's long range transportation plan - MTP 2045.

## Tip Project Selection Criteria

The 2045 Metropolitan Transportation Plan (MTP) outlines the roadway project prioritization criteria. The TIP project selection adheres to MTP guidelines to keep in line with the goals and vision stabled by the MTP. The MPO uses a tiered approach to determine how projects are prioritized. Each project under consideration for inclusion in the TIP and MTP was initially evaluated and assigned points in Tier I based on their ability to improve safety, reduce travel delay, and improve system connectivity. For example, a project that meets multiple goal categories may be considered a high priority for investment. Projects not meeting the threshold for addressing these criteria are removed from further consideration for inclusion in the implementation program. The table below shows the prioritization criteria and maximum points criteria used to evaluate each candidate project, weighted based on importance.

	<b>Evaluation Category</b>	<b>Max Points</b>
<b>1</b>	<b>Role in Regional Transportation System</b>	10
<b>2</b>	<b>Existing Condition / Asset Preservation</b>	15
<b>3</b>	<b>Project Readiness &amp; Feasibility</b>	20
<b>4</b>	<b>Safety Improvement Potential</b>	15
<b>5</b>	<b>Congestion Relief &amp; Mobility</b>	10
<b>6</b>	<b>Freight or Economic Access Benefits</b>	10
<b>7</b>	<b>Multimodal &amp; Transit Connectivity</b>	10
<b>8</b>	<b>Public and Interagency Coordination</b>	5
<b>9</b>	<b>Access and Need</b>	5
<b>TOTAL</b>		<b>100</b>

MPO staff issues a Call for Projects before the start of each Federal Fiscal Year (FFY). The Technical Advisory Committee (TAC) discuss at length all the projects received within the auspices of the project selection criteria mentioned above. Moreover, staff advises TAC to ensure selected projects adhere to anticipated performance targets. In addition to policy considerations, the MPO evaluates project readiness, including the status of environmental clearance, right-of-way acquisition, utility coordination, and coordination with the Louisiana Department of Transportation and Development (LADOTD). Projects may be rescheduled or amended if readiness factors change, in order to maintain fiscal constraint and deliverability of the overall TIP.

TAC advises staff to forward the selected projects to the Transportation Policy Committee (TPC). Finally, TPC deliberates on the TAC selected projects and provides final direction to APMPO staff, pending public comment. Staff issues a notice using electronic and print media that the plan available for a minimum 14-day public review and comment period, providing complete TIP document for public view at all locations identified within the Public Participation Plan. If no public comments are received, the TPC Chair signs a Resolution adopting the TIP.

Project ranking criteria scoring measures, data sources, and scoring scales for these criteria can be found in the table below:

Evaluation Category	Scoring Criteria <i>[What is being measured?]</i>	Purpose / Rationale <i>[Why does it matter?]</i>	Scoring Guidelines	Max Points
1 <b>Role in Regional Transportation System</b>	Measures the project's importance to the overall network. Higher scores for arterials, collectors, or multimodal corridors with regional significance.	<b>Prioritize projects that support the regional transportation network.</b>  <i>Projects on major arterials, collectors, or corridors that serve regional traffic, freight movement, or critical multimodal links are given higher value because they have broader regional benefits.</i>	0 = Local or low-volume street with minimal network value; 15 = Major arterial or regional corridor with strategic importance.	10
2 <b>Existing Condition / Asset Preservation</b>	Evaluates pavement or bridge conditions based on pavement or bridge condition data. Projects addressing "poor" or "fair" infrastructure receive higher scores. Includes maintenance and rehab.	<b>Maintain and extend the life of existing transportation assets.</b>  <i>Projects that address poor conditions, prevent further degradation, or provide cost-effective rehabilitation are prioritized.</i>	0 = Infrastructure in good condition; 15 = Poor-rated pavement/bridge with high usage or risk.	15
3 <b>Project Readiness &amp; Feasibility</b>	Considers level of design completed, ROW acquisition status, environmental clearance, and readiness to obligate funds within the TIP window.	<b>Encourage projects that are ready for implementation.</b>  <i>Evaluates the project's development status, environmental clearance, right-of-way acquisition, design progress, and schedule feasibility.</i>	0 = No design or right-of-way identified; 10 = Fully designed and ready for obligation within TIP timeframe.	20
4 <b>Safety Improvement Potential</b>	Evaluates reduction in crash frequency/severity based on historical crash data or incorporation of safety countermeasures (e.g., access control, signals).	<b>Prioritize projects that address documented safety issues or crash patterns.</b>  <i>Projects receive higher scores if they address locations with elevated crash rates, implement proven safety countermeasures, or improve non-motorized safety.</i>	0 = No crash history or safety impact; 15 = High-crash location with engineered safety improvements (e.g., signals, medians).	15
5 <b>Congestion Relief &amp; Mobility</b>	Assesses improvements in traffic flow, intersection performance, and travel-time reliability. Data may include LOS, V/C ratios, or corridor analysis.	<b>Improve traffic flow and reduce congestion impacts.</b>  <i>Rewards projects that reduce delay, improve signal coordination, or enhance traffic operations through low-cost congestion strategies.</i>	0 = No measurable congestion relief; 10 = Significantly reduces delay, improves flow at bottlenecks or intersections.	10

6	<b>Freight or Economic Access Benefits</b>	Prioritizes projects that improve access to industrial areas, freight corridors, or major job centers.	<b>Support facilities critical to regional mobility and economic vitality.</b>  <i>Projects on regionally significant corridors or serving freight, employment centers, or key institutions are scored higher.</i>	0 = No access to freight routes or job centers; 10 = Direct access to freight terminals, industrial zones, or employment hubs.	10
7	<b>Multimodal &amp; Transit Connectivity</b>	Considers bike/pedestrian improvements, ADA compliance, and transit access. Projects filling multimodal network gaps score highest.	<b>Enhance multimodal access and regional connectivity.</b>  <i>Considers improvements to pedestrian, bicycle, or transit access; network continuity; and the removal of physical barriers to travel.</i>	0 = No multimodal features or connectivity; 10 = Closes sidewalk/bike gaps and connects to transit with ADA compliance.	10
8	<b>Public and Interagency Coordination</b>	Considers project alignment with local comprehensive plans and coordination with parish or municipal partners.	<b>Align with adopted plans and demonstrate community support.</b>  <i>Points awarded for inclusion in local or regional plans, public engagement efforts, and documented support from stakeholders or elected bodies.</i>	0 = No local or agency coordination; 5 = Included in multiple local plans and supported by interjurisdictional partners.	5
9	<b>Access and Need</b>	Measures whether the project addresses service gaps or access limitations in high-need or underserved areas (e.g., no sidewalk, disconnected routes).	<b>Promote transportation access and community benefit.</b>  <i>Prioritizes projects that serve traditionally underserved populations, improve access to essential services, or mitigate disproportionate impacts.</i>	0 = Located in well-served area with multiple options; 10 = Addresses clear service gap or access issue in high-need area.	5
<b>TOTAL</b>					<b>100</b>

### TIP Projects Evaluation Scoring

PROJ #	PROJ NAME	EVALUATION CATEGORIES									TOTAL SCORE
		1	2	3	4	5	6	7	8	9	
H.016197	Jackson Street: MacArthur Drive to Red River	8	10	15	15	0	10	10	5	5	78
H.015312	City of Pineville Jones St.	6	10	20	5	0	5	5	0	5	56
H.015633	City of Alexandria Asphaltic Rehab - Phase III	6	10	20	10	0	10	10	5	5	76
H.008271	City of Alexandria Sugarhouse Road Extension	6	0	15	0	5	5	0	5	5	41
H.015476	City of Alexandria Foisy Street: Monroe to Desoto	6	15	20	5	0	5	10	5	5	71

**SECTION IV**

## **Title VI Notice**

### **Title VI Policy Statement**

It is the policy of the Rapides Area Planning Commission that no person shall on the grounds of race, color, and national origin, be excluded from participation in, be denied the benefits of, or be subjected to discrimination in any operation of the Rapides Area Planning Commission as provided by Title VI of the Civil Rights Act of 1964 and related statutes.

This policy applies to all operations of the Rapides Area Planning Commission, including its contractors and anyone who acts on behalf of the Rapides Area Planning Commission. This policy also applies to the operations of any department or agency to which the Rapides Area Planning Commission extends federal financial assistance. Federal financial assistance includes grants, training, equipment usage, donations of surplus property, and other assistance.

Prohibited discrimination may be intentional or unintentional. Seemingly, neutral acts that have disparate impacts on individuals of a protected group and lack a substantial legitimate justification are a form of prohibited discrimination. Harassment and retaliation are also prohibited forms of discrimination.

Examples of prohibited types of discrimination based on race, color, or national origin include: Denial to an individual any service, financial aid, or other benefit; Distinctions in the quality, quantity, or manner in which a benefit is provided; Segregation or separate treatment; Restriction in the enjoyment of any advantages, privileges, or other benefits provided; Discrimination in any activities related to highway and infrastructure or facility built or repaired; and Discrimination in employment.

Title VI compliance is a condition of receipt of federal funds. The Title VI Coordinator is authorized to ensure compliance with this policy, Title VI of the Civil Rights Act of 1964, 42 USC § 2000d and related statutes, 42 USC 4601 to 4655; 23 USC 109(h); 23 USC 324; DOT Order 1050.2; EO 12250; EO 12898; 28 CFR 50.3 and 49 CFR part 21.

The MPO considers equity, accessibility, and the needs of underserved populations as part of the transportation planning and programming process. In developing the TIP, the MPO evaluates whether proposed projects address documented safety concerns, improve access to essential destinations, or support mobility for vulnerable roadway users and transit-dependent populations.

This consideration complements, but does not replace, project-level environmental review or civil rights compliance requirements administered by implementing agencies.

## MPO Committee Members

### Transportation Technical Advisory Committee (TAC)

Member Entity	Committee Members
City of Alexandria	Mike Wilkinson
City of Pineville / Town of Ball	Tom David (Chair)
	Rhett Desselle
RPPJ	Cory Ashmore
LADOTD -08	Jonathan Lachney
	Dale Craig
LADOTD - HQ	Sarah Moss
LADOTD Public Transit	Tina Althalone
RAPC	Matt Johns
	Jonathan Bolen
	Nick Blackstone
	Blake Powell

### Transportation Policy Committee (TPC)

	Member Entity	Designee
<i>voting members</i>	Pineville	<b>Mayor Joe Bishop (Vice Chair)</b> (Alternate, Darrell Basco)
		<b>Nathan Martin</b> (Alternate, Tom Bouchie)
		<b>Mayor Jacques Roy (Chair)</b> (Alternate, Kay Michiels)
	Alexandria	<b>Cynthia Perry</b> (Alternate, Mike Wilkinson)
		<b>Jules Green</b>
		<b>Craig Smith</b> (Alternate, Cory Ashmore)
	RPPJ	<b>Ollie Overton</b>
	Town of Ball	<b>Mayor Gail Wilking</b> (Alternate, Becky Edwards)
	England Authority	<b>Ralph Hennessey</b> (Alternate, Scott Gammel)
	Central Louisiana Regional Port	<b>Ben Russo</b> (Alternate, Terry Spruill)
	LADOTD-08	<b>Troy Roussell</b> (Alternate, Jonathan Lachney)
	<i>ex-officio non-voting</i>	LADOTD-HQ
FHWA		<b>Laura Phillips</b>
FTA		<b>Michelle Bloomer</b>

## Committee Member Addresses

Mayor Jacques Roy  
City of Alexandria  
P.O. Box 71  
Alexandria, LA 71301

Sarah Moss  
LaDOTD HQ  
P.O. Box 94245  
Baton Rouge, LA 70804-9245

Councilman Nathan Martin  
City of Pineville  
300 Pearce Rd  
Pineville, LA 71360

Troy Russell  
Administrator LaDOTD 08  
P.O. Box 5945  
Alexandria, LA 71307-5945

Ralph Hennessey  
England Airpark  
1611 Arnold Dr  
Alexandria, LA 71303

Councilman Jules Green  
City of Alexandria  
P.O. Box 71  
Alexandria, LA 71309

President Craig Smith  
Rapides Parish Police Jury  
20 Paul Cemetery Rd  
Deville, LA 71328

Ollie Overton  
Rapides Parish Police Jury  
701 Murray Street, Suite 201  
Alexandria, LA 71301

Mayor Gail Wilking  
Town of Ball  
100 Municipal Ln  
Ball, LA 71405

Lynn Hayes  
Federal Transit Administration  
819 Taylor St. Room 8A36  
Ft. Worth, TX 76102

Mayor Joe Bishop  
City of Pineville  
P.O. Box 3820  
Pineville, LA 71361

Laura Phillips  
Federal Highway Administration  
5304 Flanders Drive, Suite A  
Baton Rouge, LA 70808

Ben Russo  
Central LA Regional Port  
600 Port Rd.  
Alexandria, LA 71303

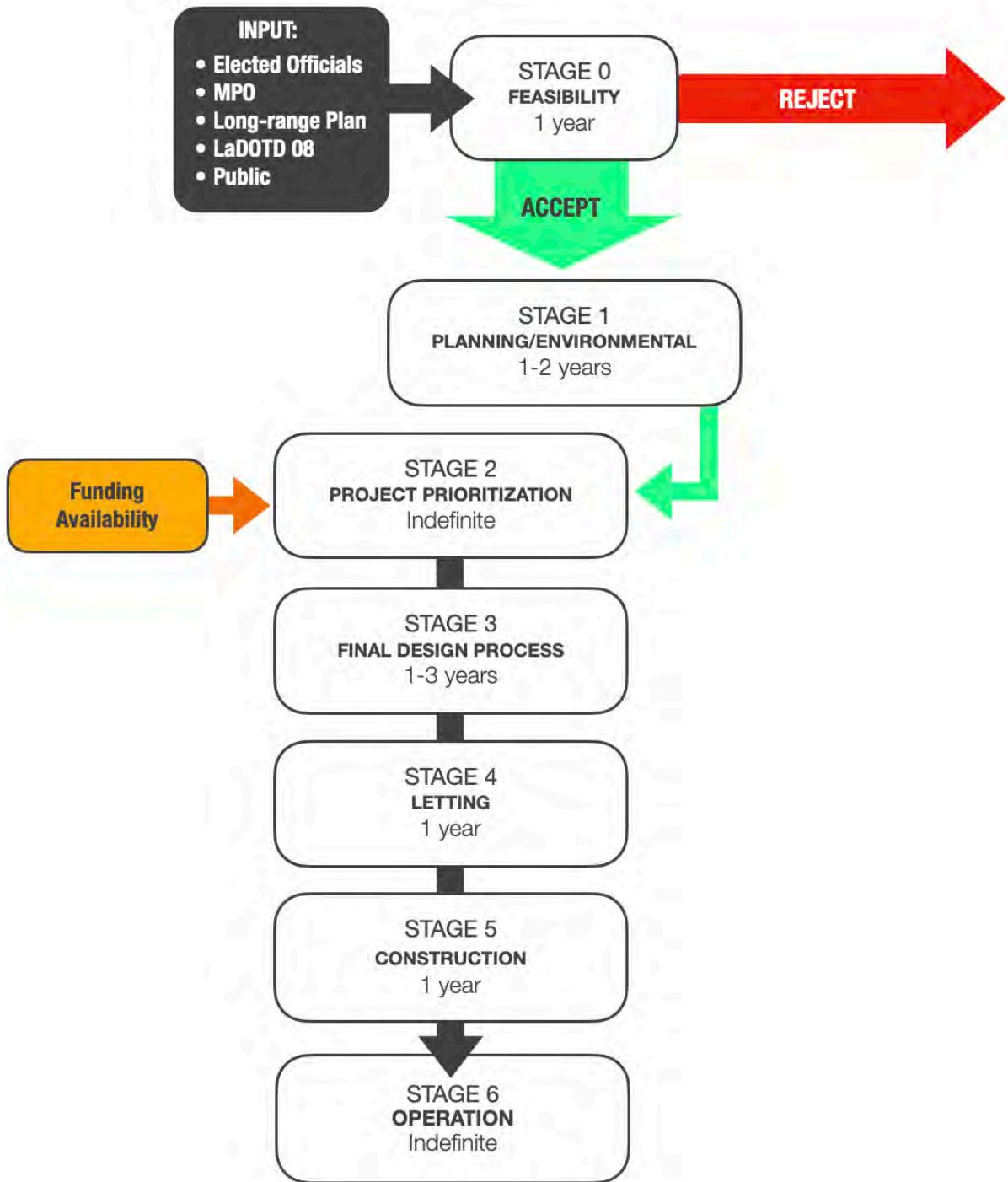
Councilwoman Cynthia Perry  
City of Alexandria  
P.O. Box 71  
Alexandria, LA 71309

## Committee Meeting Notices & Minutes

The following meeting notices and minutes can be found at [www.rapc.info/transportation](http://www.rapc.info/transportation).

- MPO Transportation Policy Committee Meeting 02-04-2026
- MPO Transportation Policy Committee Meeting 12-05-2025
- MPO Transportation Policy Committee Meeting 09-03-2025
- MPO Transportation Policy Committee Meeting 06-11-2025
- MPO Transportation Policy Committee Meeting 02-05-2025
- MPO Transportation Policy Committee Meeting 12-04-2024
- MPO Transportation Policy Committee Meeting 09-04-2024
- MPO Transportation Policy Committee Meeting 06-05-2024
- MPO Transportation Policy Committee Meeting 02-08-2024
- MPO Transportation Policy Committee Meeting 12-08-2023
- MPO Transportation Policy Committee Meeting 09-06-2023
- MPO Transportation Policy Committee Meeting 06-07-2023
- MPO Transportation Policy Committee Meeting 02-01-2023
- MPO Transportation Policy Committee Meeting 12-02-2022
- MPO Transportation Policy Committee Meeting 09-07-2022
- MPO Transportation Policy Committee Meeting 06-08-2022
- MPO Transportation Policy Committee Meeting 02-11-2022
- MPO Transportation Policy Committee Meeting 12-08-2021
- MPO Transportation Policy Committee Meeting 10-26-2021
- MPO Transportation Policy Committee Meeting 08-30-2021
- MPO Transportation Policy Committee Meeting 05-26-2021
- MPO Transportation Policy Committee Meeting 02-10-2021
- MPO Transportation Policy Committee Meeting 11-19-2020
- MPO Transportation Policy Committee Meeting 07-16-2020
- MPO Transportation Policy Committee Meeting 05-27-2020
- MPO Transportation Policy Committee Meeting 04-09-2020
- MPO Transportation Policy Committee Meeting 02-18-2020
- MPO Transportation Policy Committee Meeting 08-29-2019
- MPO Transportation Policy Committee Meeting 06-25-2019
- MPO Transportation Policy Committee Meeting 05-16-2019
- MPO Transportation Policy Committee Meeting 02-06-2019
- MPO Transportation Policy Committee Meeting 10-29-2018
- MPO Transportation Policy Committee Meeting 09-06-2018
- MPO Transportation Policy Committee Meeting 04-05-2017
- MPO Transportation Policy Committee Meeting 02-16-2017
- MPO Transportation Policy Committee Meeting 11-01-2017
- MPO Transportation Policy Committee Meeting 05-22-2017
- MPO Transportation Policy Committee Meeting 02-16-2017
- MPO Transportation Policy Committee Meeting 11-01-2017
- MPO Transportation Policy Committee Meeting 05-22-2017
- MPO Transportation Policy Committee Meeting 04-12-2017
- MPO Transportation Policy Committee Meeting 12-19-2016
- MPO Transportation Policy Committee Meeting 08-17-2016
- MPO Transportation Policy Committee Meeting 04-07-2016
- MPO Transportation Policy Committee Meeting 08-26-2015
- MPO Transportation Policy Committee Meeting 08-26-2015
- MPO Transportation Policy Committee Meeting 04-02-2015
- MPO Transportation Policy Committee Meeting 09-23-2014
- MPO Transportation Policy Committee Meeting 07-10-2014

# LaDOTD Project Development Process



## **What is an MPO and what is its role in the planning process?**

The MPO is the forum for cooperative transportation decision making for the metropolitan planning area. An MPO is required in each urbanized area having a population of over 50,000. There are currently 400+ MPOs in the United States. These MPOs, in cooperation with states, transit operators, local municipalities, parishes and other key transportation entities in the metropolitan area carry out the planning process. These same agencies, under the coordination of the MPO, also cooperatively develop the annual Unified Planning Work Program (UPWP) and the 4-year Transportation Improvement Program (TIP).

In 1975 the Governor of Louisiana designated the Alexandria – Pineville Urbanized Area the sixth Metropolitan Planning Organization (MPO) in Louisiana. This designation occurred once the Urbanized Area (UA) exceeded 50,000 in population (Presently, the 2010 census population within the MPO planning area boundary is 131,613). Hammond (2013) is the latest MPO designation in Louisiana. Prior to that was Lake Charles (1984).

## **What is transportation planning and why does it exist?**

The transportation planning process exists to provide the information needed for decision makers to choose among alternative strategies for improving transportation system performance.

Transportation planning is the process of:

- Establishing a community/regional vision and identifying how transportation fits into this vision.
- Developing/utilizing a cooperative and inclusive transportation vision and operations concept for the area.
- Understanding the types of decisions needed to achieve this vision.
- Assessing the opportunities and limitations of the future in relation to goals and desired system performance measures.
- Identifying near – and long-term consequences of alternative choices.
- Relating alternative decisions to goals, objectives, and system performance measures. Presenting this information to decision makers.
- Helping decision makers establish priorities and develop an investment program.

## **What is the importance of transportation planning in our metropolitan area?**

The Intermodal Surface Transportation Efficiency act (ISTEA) of 1991 emphasized transportation planning with a focus on intermodal transportation. The Transportation Equity Act for the 21st Century (TEA-21) of 1998 continued the vision of ISTEA with seven planning factors that directly relate to quality of life in states and metropolitan areas. The Safe, Accountable, Flexible, Efficient Transportation Equity Act: A Legacy for Users (SAFETELU) of 2005 represents the largest surface transportation investment in our Nation's history, addressing many challenges facing our transportation system, such as improving safety, reducing traffic congestion, improving efficiency in freight movement, increasing intermodal connectivity, and protecting the environment and laying the groundwork for addressing future challenges. MAP-21, the Moving Ahead for Progress in the 21st Century Act (P.L. 112-141), was signed into law by President Obama on July 6, 2012. Funding surface transportation programs at over \$105 billion for fiscal years (FY) 2013 and 2014, MAP-21 is the first longterm highway authorization enacted since 2005. MAP-21 is a milestone for the U.S. economy and the Nation's surface transportation program.

By transforming the policy and programmatic framework for investments to guide the system's growth and development, MAP-21 created a streamlined and performance-based surface transportation program and built on many of the highway, transit, bike, and pedestrian programs and policies established in 1991. The FAST Act added two new planning factors and emphasized importance to national freight network. The most recent legislation Infrastructure Investment and Jobs Act (IIJA) authorizes \$1.2 trillion for transportation and infrastructure spending with \$550 billion of that figure going toward "new" investments and programs.

When developing transportation plans, planners should seek transportation solutions that:

- Maintain a continuing, cooperative and comprehensive planning process
- Enhance system integration and connectivity
- Promote efficient system management and operation
- Increase safety and security
- Increase accessibility and mobility options
- Protect the environment and improve quality of life
- Emphasis system preservation
- Support economic vitality
- Involve the general public
- Enhance travel and tourism.
- Improve the resiliency and reliability of the transportation systems and reduce/mitigate storm-water impacts on surface transportation.

## Public Review & Comment Schedule

ACTIVITY	DATE	LOCATION	PURPOSE
<b>Technical Advisory Committee (TAC) Meeting</b>	<b>Wednesday, April 29, 2026</b>	803 Johnston Street, Alexandria, LA 71301, Online	The TAC is scheduled to make a formal recommendation on the proposed FFY2027-2030 TIP at this meeting.
<b>Transportation Policy Committee (TPC) Meeting</b>	<b>Wednesday, May 6, 2026 10:00 AM</b>	803 Johnston Street, Alexandria, LA 71301, Online	There is an additional opportunity for public input at this meeting, under the standing Public Comments agenda item. The TPC is scheduled to take formal action on the proposed TIP FFY2027-2030 at this meeting.
<b>PUBLIC REVIEW &amp; COMMENT PERIOD</b>	<b>May 9 - 23, 2026</b>	<p><b>Electronic Review:</b> <a href="http://www.rapc.info">www.rapc.info</a></p> <p>Hard copy documents available at locations specified by Public Participation Plan (P3).</p>	The general public, partners and stakeholders will have an opportunity to review and comment on the proposed FFY2027-2030 TIP. Comments will be accepted in writing using the online public comment form or by mail to: Rapides Area Planning Commission, ATTN: APMPO, 803 Johnston St., Alexandria, LA 71301 RAPC

## Partner & Stakeholder Consultation

APMPO worked extensively with regional planning partners, including the Louisiana Department of Transportation and Development (DOTD) and Alexandria Transit, as well as all of our member jurisdictions. In advance of the proposed TIP, APMPO coordinated with DOTD and alerted project sponsors to necessary project changes. APMPO conducted an open Call for Projects to project sponsors, and worked closely with representatives of our planning partners and member jurisdictions to review particular projects. APMPO staff also engaged with the Transportation Policy Committee and Technical Advisory Committee on the development of this proposed FFY2027-2030 TIP.

## Public Comments

A 14-day public comment period is planned for May 9 - 23, 2026.

## MTP Consistency

Federal regulations require projects in the TIP must be listed in or otherwise demonstrated as consistent with the APMPO's long-range transportation plan - Metropolitan Transportation Plan 2045. The proposed FFY2027-2030 is consistent with the APMPO's MTP 2045.

PLACEHOLDER JOINT CERTIFICATION

# Appendix A | USDOT-FHWA Competitive Grant Projects Listing

## Louisiana US DOT-FHWA IIJA Competitive Projects-Summary as of July 2025

Program Name	Award Year	US DOT Award Type	Delivery Phase Included	Amount Awarded	Total Project Cost	Non-State		Sponsor Name	Project #	Project Name	Project Description	Location/MPO Area
						Direct Recp.	TBD					
Reconnecting Communities Program (RCP)	FY 24	Planning	Planning	\$320,000.00	\$384,000.00		TBD	Rapides Area Planning Commission	TBD	Connecting Divided Communities in Central Louisiana Project	The Pathways to Unity: Connecting Divided Communities in Central Louisiana Project is a comprehensive planning and engineering study aimed at improving mobility in Alexandria, Louisiana, a disadvantaged community facing persistent poverty and divided by the U.S. Highway 71/MacArthur Drive corridor, Interstate Highway 49, and the abandoned Missouri Pacific Railroad. The study will explore alternatives for overcoming historical and current transportation barriers through enhanced pedestrian, bicycle, and transit connections. The Project will identify a list of prioritized capital projects, operational improvements, and provide planning-level designs and cost estimates to inform local, regional, and state project programming	Alexandria
Safe Streets and Roads for All (SS4A)	FY 23	Planning	Planning	\$1,480,000.00	\$1,850,000.00		yes	Rapides Area Planning Commission	TBD	Vulnerable Road Users Safety Improvement Plan (RAPC)	This award will be used by the Rapides Area Planning Commission (RAPC) to update its Local Road Safety Plan to meet SS4A Action Plan requirements; develop comprehensive safety action plans for 5 rural cities within the RAPC planning area; create an ADA Transition Plan for the region; and collect data related to vulnerable road user activity at targeted locations with elevated crash-risk.	Alexandria

**Alexandria-Pineville Metropolitan Planning Organization**  
**% Rapides Area Planning Commission**  
803 Johnston Street, Alexandria, Louisiana 71301  
Phone: (318) 487-5401 | Fax: (318) 487-5406  
**[www.rapc.info](http://www.rapc.info)**